

Key DTM figures in the sites



72 sites¹



19,660 households

17,179 by Cyclone Idai
2,481 by floods



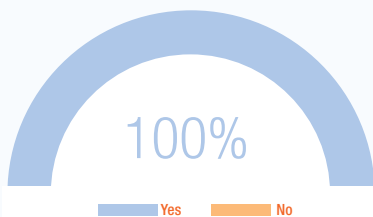
95,338 individuals

86,805 by Cyclone Idai
8,533 by floods

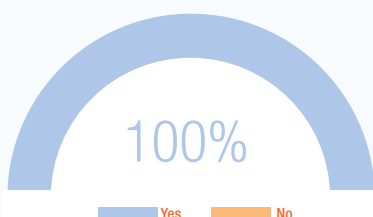


43 migrants have returned and settled since May

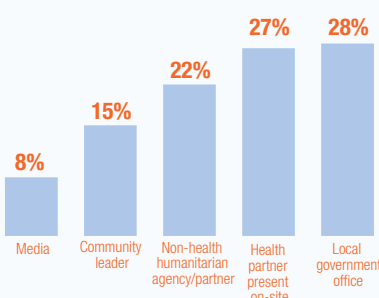
Actions on COVID-19 prevention and control taken in all sites



Reportedly, people living in all the sites have been informed of the COVID-19 precaution measures



Source of information on COVID-19 in the 100% of sites with preventive controls

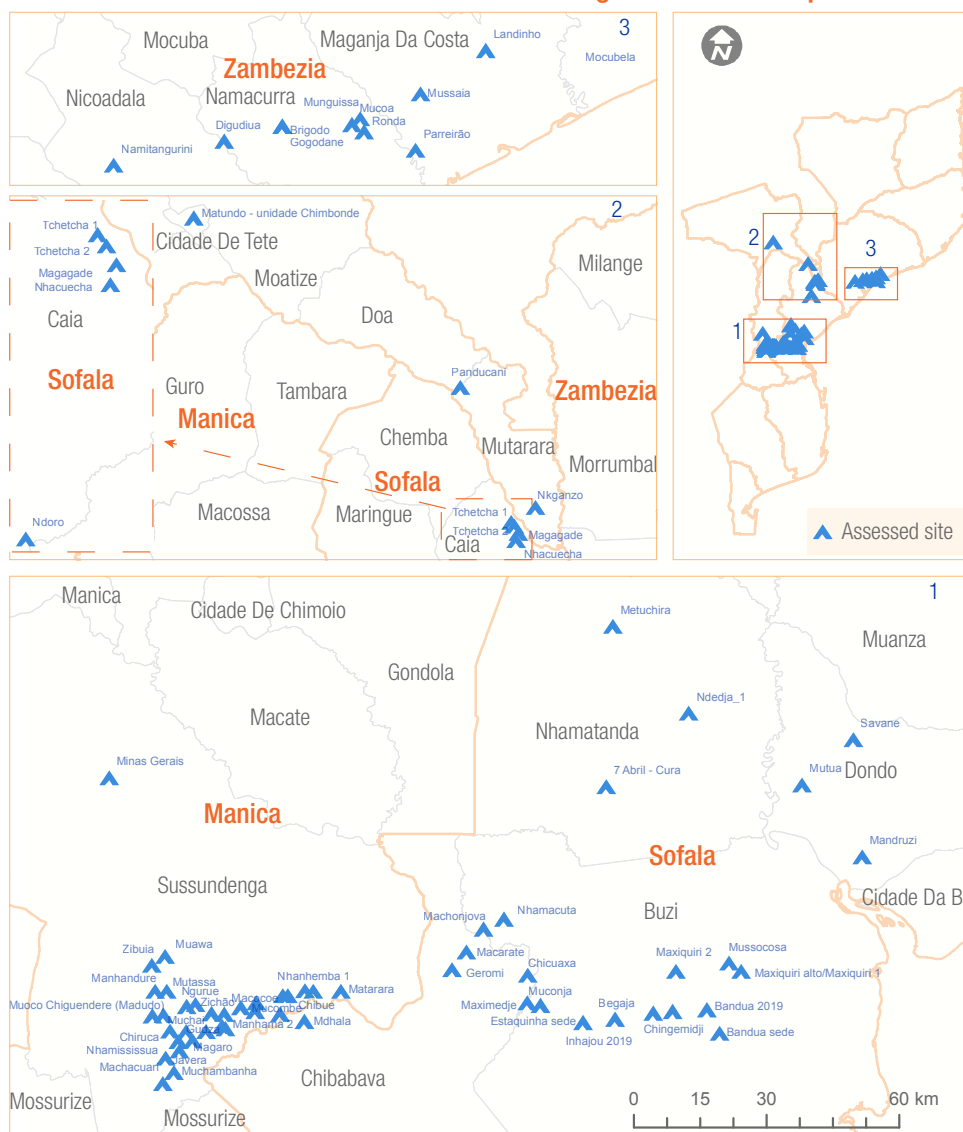


The current outbreak of COVID-19 has resulted in a global pandemic, heightening the risk to vulnerable populations, internally displaced people and people on the move. On 22 March 2020, the Government of Mozambique officially declared the first positive COVID-19 case. Concern about the potential spread of COVID-19 in Mozambique was elevated in late March, when [according](#) to Mozambique's National Migration Service (SENAMI), over 14,000 Mozambican migrants returned from South Africa over the Ressano Garcia border within a span of a few days, as South Africa declared lock-down due to COVID-19, further heightening the risk to vulnerable populations especially the internally displaced population.

In response to the COVID-19 pandemic, IOM's Displacement Tracking Matrix (DTM) in collaboration with the Government of Mozambique's National Disaster Management Agency (INGC) conducted an assessment in the resettlement sites from 07 to 11 July 2020, with the sole purpose to inform the government and humanitarian partners on the precautionary measures currently available in resettlement sites hosting displaced populations since Cyclone Idai. The information gathered will help decision-makers to plan interventions and to recommend health and site preparation measures for outbreak prevention and containment in the resettlement sites in the central region.

In the 72 resettlement sites assessed, nine sites (Bandua 2019, Begaja, Chingemidji, Inhajou 2019 and Maximedje sites in Buzi district of Sofala province and Chibue, Macocoe, Mucombe and Ngurue sites in Sussudenga district of Manica province) reported that in the past month, 43 Mozambican migrant workers returning from South Africa and Zimbabwe settled in the sites. All sites reported a noticeable change in people's behaviours and habits to better prevent COVID-19.

Resettlement Sites in the Central Region of Mozambique



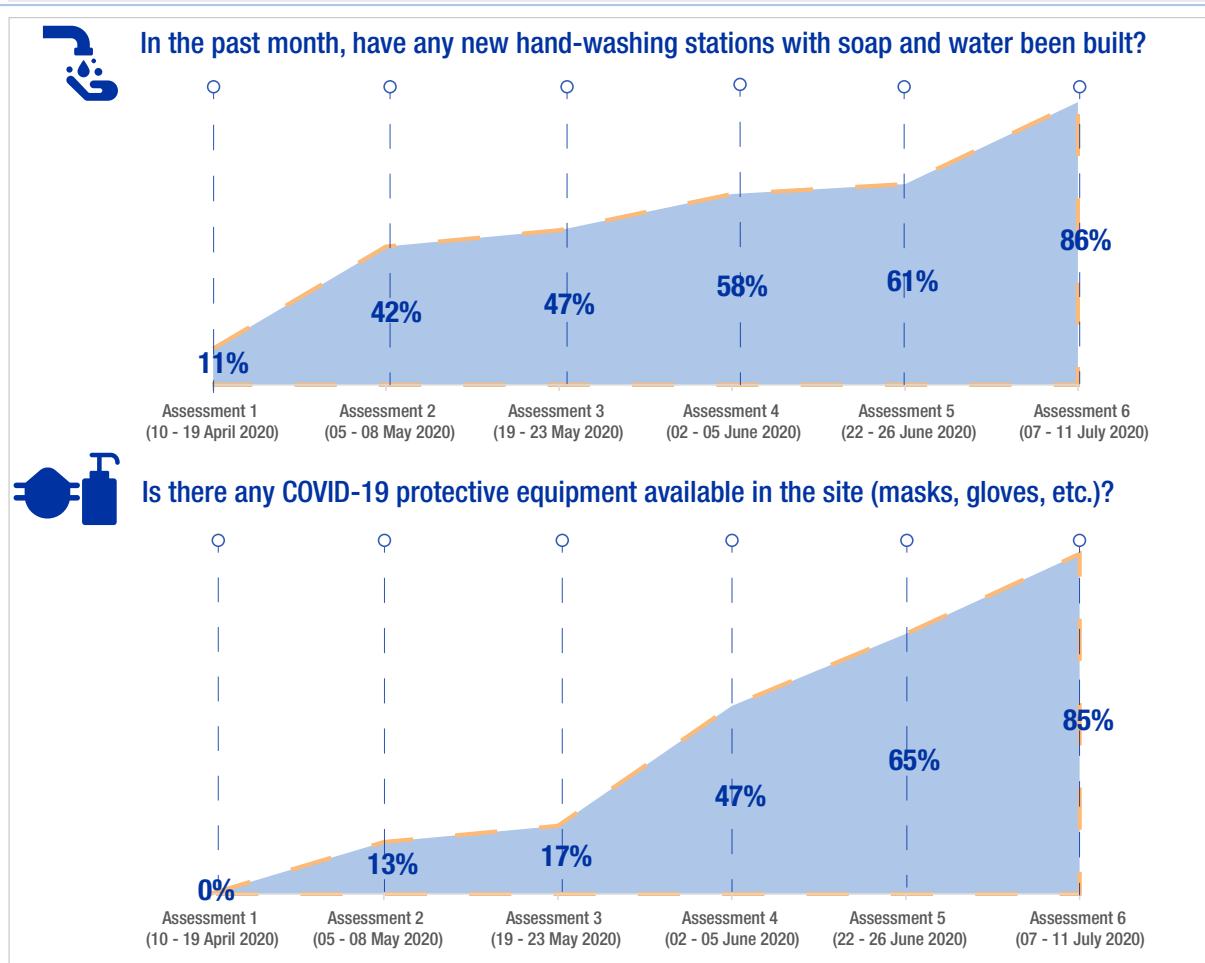
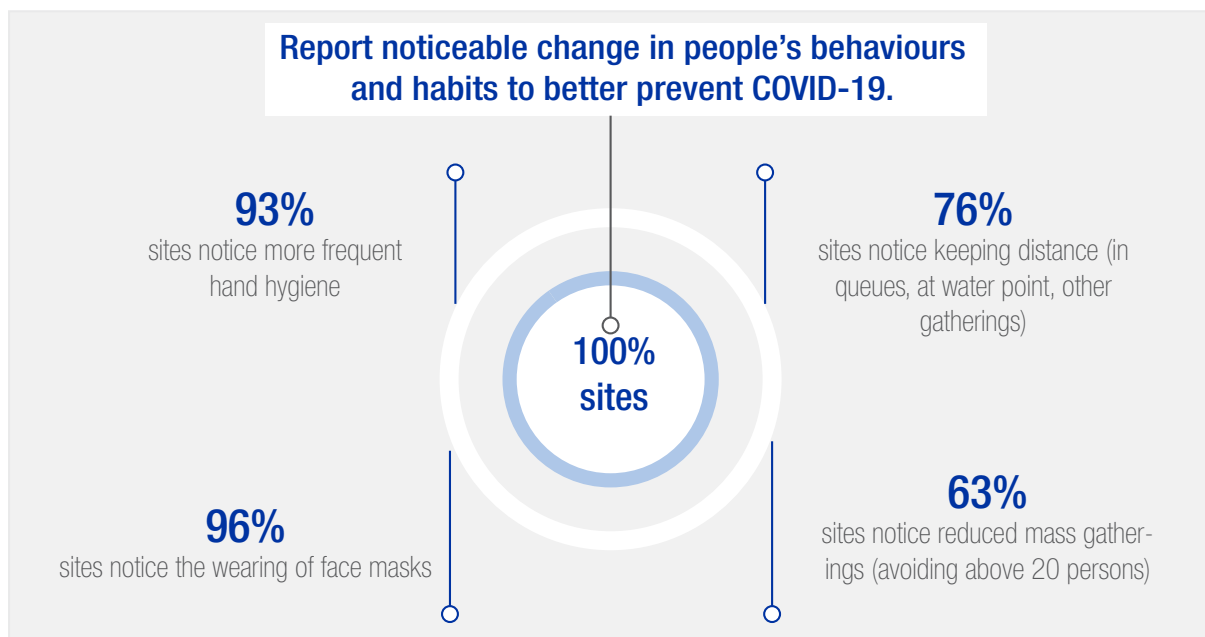
The depiction and use of boundaries, geographic names, and related data shown on maps and included in this report are not warranted to be error free nor do they imply judgment on the legal status of any territory, or any endorsement or acceptance of such boundaries by IOM.

¹ Grudja (4 de Outubro/Nhabziconja) site in Buzi was split into two by INGC increasing the number of resettlement sites in the central region to 72.

Preparedness

When asked if actions for COVID-19 prevention and control are taken in the assessed resettlement sites, all sites (up from 97% in the previous assessment) report taking actions.

When asked if basic COVID-19 Personal Protective Equipment (masks, gloves, etc.) available on site, 85 per cent (up from 65% in the previous assessment) of the assessed sites reported having personal protective supplies.



Annex 1: Preparedness Matrix for Resettlement Sites in Manica Province

Province	District	Site name	Were there any actions for COVID-19 prevention and control taken in the site?	Were people living in the site informed of the COVID-19 precaution measures?	Were there any awareness sessions held in the site to inform people of the COVID-19 precaution measures?	In the past month, any new hand washing station with soap and water was built?	Any of the COVID-19 protective equipment available in the site (masks, gloves, etc.)?	Is there isolation space available in the site?	Have you noticed any change in people's behaviours and habits to better prevent COVID-19 in this site?	
Manica	Sussundenga	25 de Setembro	Yes	Yes	Yes	Yes	Yes	No	Yes	
		Bairro da unidade	Yes	Yes	Yes	Yes	Yes	No	Yes	
		Chibue	Yes	Yes	Yes	Yes	Yes	No	Yes	
		Chibue Mateo	Yes	Yes	Yes	Yes	Yes	No	Yes	
		Chiruca	Yes	Yes	Yes	Yes	Yes	No	Yes	
		Gudza	Yes	Yes	Yes	Yes	Yes	No	Yes	
		Javera	Yes	Yes	Yes	Yes	No	No	Yes	
		Machacuari	Yes	Yes	Yes	Yes	Yes	Yes	No	Yes
		Macocoe	Yes	Yes	Yes	Yes	Yes	Yes	No	Yes
		Madibunhana	Yes	Yes	Yes	Yes	Yes	Yes	No	Yes
		Magaro	Yes	Yes	Yes	Yes	Yes	Yes	No	Yes
		Magueba	Yes	Yes	Yes	Yes	Yes	Yes	No	Yes
		Manhama 1	Yes	Yes	Yes	Yes	Yes	Yes	No	Yes
		Manhama 2	Yes	Yes	Yes	Yes	Yes	Yes	No	Yes
		Manhandure	Yes	Yes	Yes	Yes	Yes	Yes	No	Yes
		Matarara	Yes	Yes	Yes	Yes	Yes	Yes	No	Yes
		Metchisso	Yes	Yes	Yes	Yes	Yes	Yes	No	Yes
		Minas Gerais	Yes	Yes	Yes	Yes	Yes	Yes	No	Yes
		Muawa	Yes	Yes	Yes	Yes	Yes	Yes	No	Yes
		Muchai	Yes	Yes	Yes	Yes	Yes	Yes	No	Yes
		Muchambanha	Yes	Yes	Yes	Yes	Yes	Yes	No	Yes
		Mucombe	Yes	Yes	Yes	Yes	Yes	Yes	No	Yes
		Muco Chiguendere (Madudo)	Yes	Yes	Yes	Yes	Yes	Yes	No	Yes
		Mutassa	Yes	Yes	Yes	Yes	Yes	Yes	No	Yes
		Ngurue	Yes	Yes	Yes	Yes	Yes	Yes	No	Yes
		Nhamississua	Yes	Yes	Yes	Yes	Yes	Yes	No	Yes
Nhanhamba 1	Yes	Yes	Yes	Yes	Yes	Yes	No	Yes		
Nhanhamba 2	Yes	Yes	Yes	Yes	Yes	Yes	No	Yes		
Tossene Choma	Yes	Yes	Yes	Yes	Yes	Yes	No	Yes		
Zibuia	Yes	Yes	Yes	Yes	Yes	Yes	No	Yes		
Zichão	Yes	Yes	Yes	Yes	Yes	Yes	No	Yes		

Annex 2: Preparedness Matrix for Resettlement Sites in Sofala Province

Province	District	Site name	Were there any actions for COVID-19 prevention and control taken in the site?	Were people living in the site informed of the COVID-19 precaution measures?	Were there any awareness sessions held in the site to inform people of the COVID-19 precaution measures?	In the past month, any new hand washing station with soap and water was built?	Any of the COVID-19 protective equipment available in the site (masks, gloves, etc.)?	Is there isolation space available in the site?	Have you noticed any change in people's behaviours and habits to better prevent COVID-19 in this site?
Sofala	Buzi	Bandua 2019	Yes	Yes	Yes	Yes	Yes	No	Yes
		Bandua sede	Yes	Yes	Yes	Yes	Yes	No	Yes
		Begaja	Yes	Yes	Yes	Yes	Yes	No	Yes
		Chingemidji	Yes	Yes	Yes	Yes	Yes	No	Yes
		Estaquinha sede	Yes	Yes	Yes	Yes	Yes	No	Yes
		Inhajo u 2019	Yes	Yes	Yes	Yes	Yes	No	Yes
		Machonjova	Yes	Yes	Yes	Yes	Yes	No	Yes
		Maximedje	Yes	Yes	Yes	Yes	Yes	No	Yes
		Maxiquiri 2	Yes	Yes	Yes	Yes	Yes	No	Yes
		Maxiquiri alto/Maxiquiri 1	Yes	Yes	Yes	Yes	Yes	No	Yes
		Musocosa	Yes	Yes	Yes	Yes	Yes	No	Yes
	Nhamacunta	Yes	Yes	Yes	Yes	No	No	Yes	
	Caia	Magagade	Yes	Yes	Yes	Yes	Yes	Yes	Yes
		Ndoro	Yes	Yes	Yes	Yes	Yes	No	Yes
		Nhacuecha	Yes	Yes	Yes	Yes	No	No	Yes
		Tchetcha 1	Yes	Yes	Yes	Yes	No	No	Yes
		Tchetcha 2	Yes	Yes	Yes	Yes	No	No	Yes
	Chibabava	Chicuaxa	Yes	Yes	Yes	No	No	No	Yes
		Geromi	Yes	Yes	Yes	No	No	No	Yes
		Macarate	Yes	Yes	Yes	No	No	No	Yes
		Mdhala	Yes	Yes	Yes	No	No	No	Yes
		Muconja	Yes	Yes	Yes	No	Yes	No	Yes
	Dondo	Manduzi	Yes	Yes	Yes	Yes	Yes	No	Yes
		Mutua	Yes	Yes	Yes	Yes	Yes	No	Yes
		Savane	Yes	Yes	Yes	Yes	Yes	No	Yes
	Nhamatanda	7 Abril - Cura	Yes	Yes	Yes	No	Yes	No	Yes
		Metuchira	Yes	Yes	Yes	Yes	Yes	No	Yes
Ndedja_1		Yes	Yes	Yes	Yes	Yes	No	Yes	

[Go back](#)

Annex 3: Preparedness Matrix for Resettlement Sites in Tete and Zambezia Provinces

Province	District	Site name	Were there any actions for COVID-19 prevention and control taken in the site?	Were people living in the site informed of the COVID-19 precaution measures?	Were there any awareness sessions held in the site to inform people of the COVID-19 precaution measures?	In the past month, any new hand washing station with soap and water was built?	Any of the COVID-19 protective equipment available in the site (masks, gloves, etc.)?	Is there isolation space available in the site?	Have you noticed any change in people's behaviours and habits to better prevent COVID-19 in this site?
Tete	Cidade De Tete	Matundo - unidade Chimbo nde	Yes	Yes	Yes	No	Yes	No	Yes
	Mutarara	Nkganzo	Yes	Yes	Yes	No	No	No	Yes
		Panducani	Yes	Yes	Yes	Yes	No	No	Yes
Zambezia	Maganja Da Costa	Landinho	Yes	Yes	Yes	Yes	Yes	No	Yes
		Mussaia	Yes	Yes	Yes	Yes	Yes	No	Yes
		Parreirão	Yes	Yes	Yes	Yes	Yes	No	Yes
	Namacurra	Brigodo	Yes	Yes	Yes	Yes	Yes	No	Yes
		Gogodane	Yes	Yes	Yes	No	Yes	No	Yes
		Mucoa	Yes	Yes	Yes	Yes	Yes	No	Yes
		Munguissa	Yes	Yes	Yes	Yes	Yes	No	Yes
		Ronda	Yes	Yes	Yes	Yes	Yes	No	Yes
	Nicoadala	Digudiua	Yes	Yes	Yes	Yes	Yes	No	Yes
		Namitangurini	Yes	Yes	Yes	Yes	Yes	No	Yes

[Go back](#)