

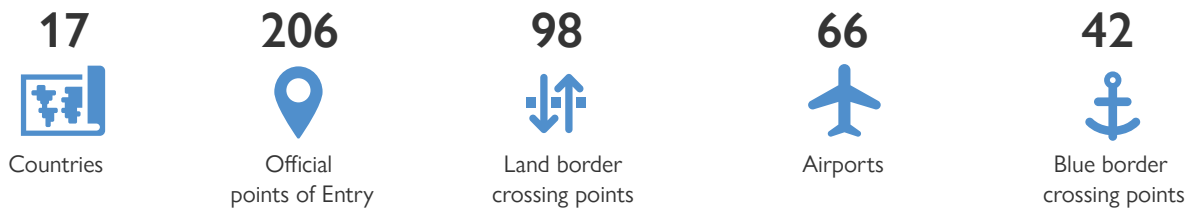
Tracking Mobility Impact - Points of Entry Analysis

June 25, 2020 IOM Regional Office for the Middle East and North Africa

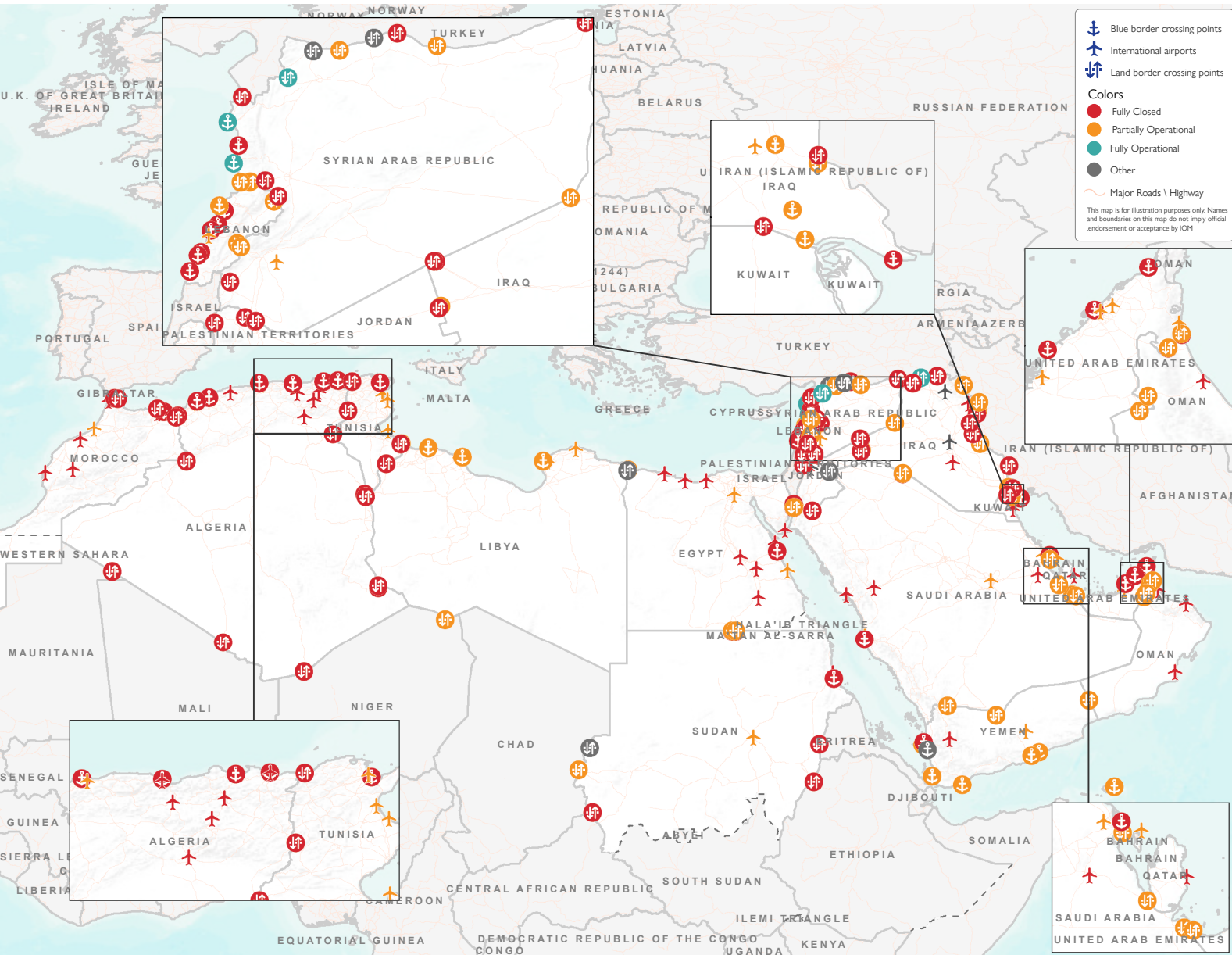
According to the World Health Organization (WHO) the total cases confirmed reached 573,509 as of 27 June 2020. A total of 8,980 have succumbed to the disease, while 372,643 have recovered as of 27 June. The outbreak of the virus has affected global and regional mobility in the form of various travel disruptions and restrictions.

To better understand how the pandemic affects global mobility, the International Organization for Migration (IOM) has developed an online tool and database to register points of entry, exit and transit – such as airports, land and blue border crossing points where mobility restrictions and preparedness and response measures are in place to prevent, protect against, control and provide a public health response that is in line with International Health Regulations (IHR). These include: (1) Movement restrictions on entry and/or exit, (2) Changes in visa requirements, (3) Restrictions applied to certain nationalities to disembark at this location, (4) Changes in identification documents needed to disembark, (5) Medical measures applied such as Health Staffing/Medical Personnel, Standard Operating Procedures (SOPs), Risk communication and community engagement (RCCE), Infection prevention and control (IPC) and Surveillance and Referral.

Between 18 and 25 June 2020, data was collected on 206 official locations across 17 countries across the region. These locations include: 98 land border crossings points, 66 airports, 42 blue border crossing points (including sea, river and lake ports). This work is based on the information collected by IOM Country offices in the Middle East and North Africa.



Overview of monitored International Airports, Land border crossing points and Blue border crossing points in MENA



Country Level Restriction Measures

In the region, no country is applying complete restrictions and closures while 13 countries are applying partial restrictions and 4 does not implement restriction measures at the country level. Nevertheless, we also acknowledge that complete and partial restriction measures are imposed in areas and cities but not at the country level. Moreover, 9 countries have declared a national emergency during last weeks that is currently in place as of 25 June. However, the national emergency measure does not necessarily coincide with the outbreak of the pandemic and may be an extension of previous security measures. Implementation of complete restrictions means no movement is permitted within the country, while implementation of partial restrictions means some movement is permitted. Furthermore, 8 countries in the region adopted national quarantine for arrivals from other countries to prevent the spread of COVID-19 within the country.

The most common measures implemented are with respect to visa changes/restrictions. These include “leniency towards or removal of fines for visa overstay, expiration of residency or work permit” applied by eight countries and “temporary opening of the borders to allow otherwise stranded migrants to go home” in eight countries as well, showing the willingness of states to protect and respect the rights of people affected by the restrictions.

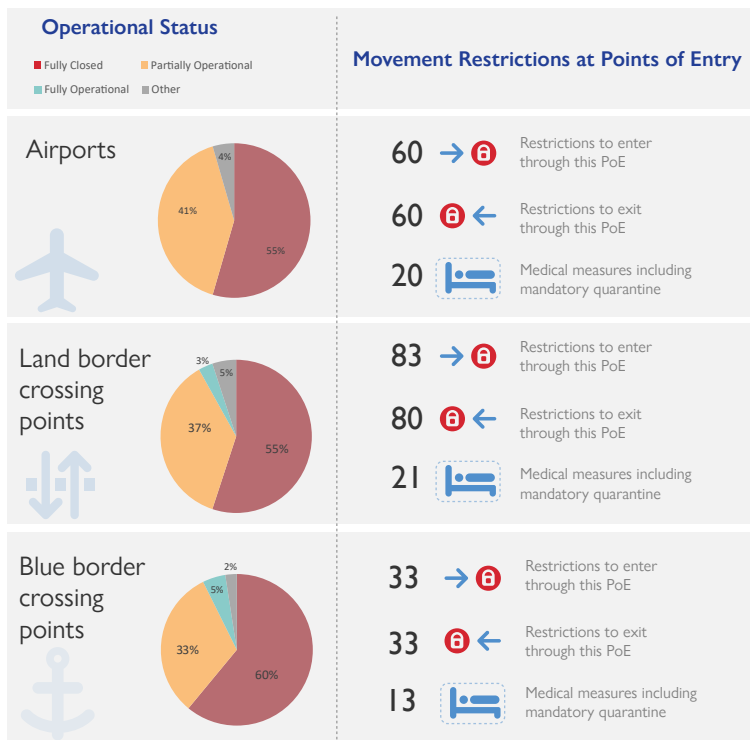
Points of Entry

IOM is currently monitoring 66 airports, 98 land border crossing points and 42 blue border crossing points in the region. This analysis focuses on the official Points of Entry (PoE) in the countries; nevertheless, we acknowledge the presence of at least 27 unofficial Points of Entry in the region, consisting of 22 land border crossing points and 5 blue border crossing points.

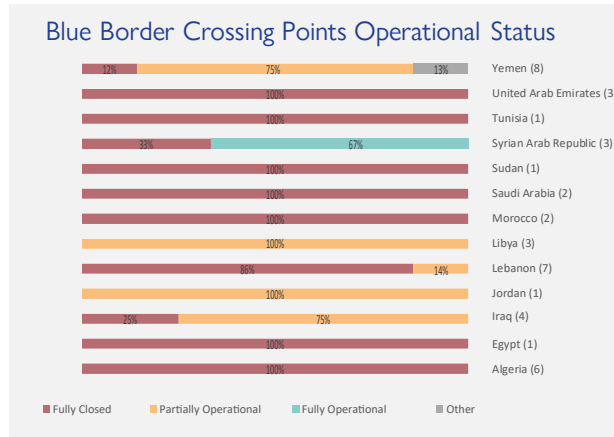
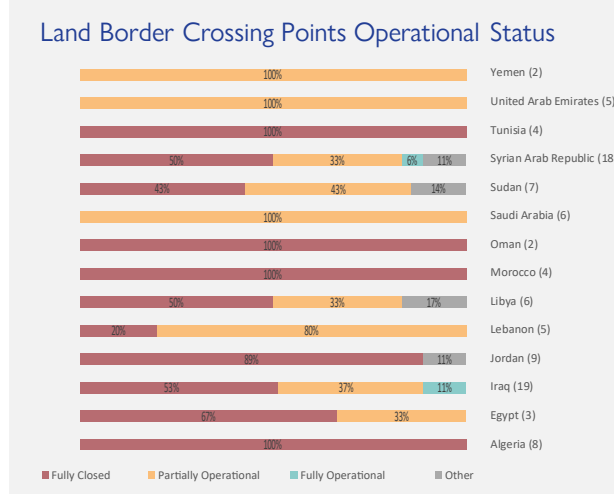
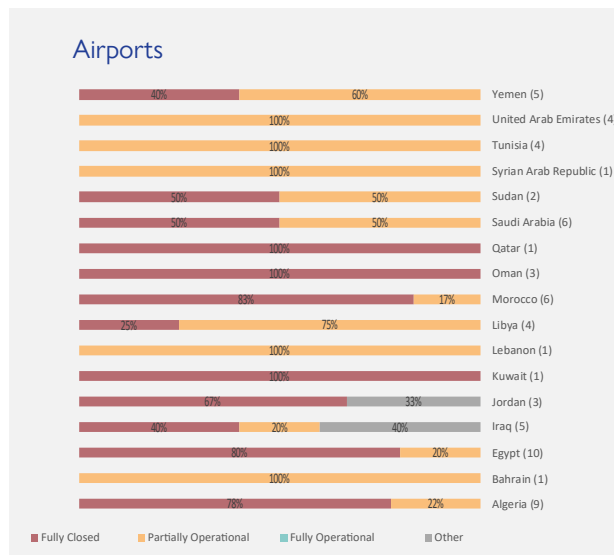
The following information on PoE such as their operational status, restriction measures and medical measures is collected on the statuses of: (1) closed for entry and exit, (2) closed for entry (3) closed for exit (4) open for commercial traffic only (5) open only to returning nationals and residents (6) open for entry and exit (7) other and (8) unknown. All eight measures were considered for airport, land and blue border crossing points.

In the Region, the operational status of border crossing points is characterized by the implementation of several restriction measures to curb the spread of COVID-19. Some slight changes have been recorded in the region on the operations status of border crossing points during the last week compared to the previous situation.

Around 55 per cent of monitored international airports are fully closed and 41 per cent are partially operational. Almost 55 per cent of monitored land border crossing points are affected by total closures and 37 per cent are only partially operational while there are three land border crossing point classified as fully operational as of 25 June. Out of 42 monitored blue border crossing points in the region 60 per cent are fully closed and 33 per cent are partially operational in the region while only two blue border crossing points are fully operational for passengers.



Notes: the totals in the pie charts are relative to the monitored Points of Entry



Notes:

- Under the category “Partially Operational” we include “closed for entry”, “closed for exit”, “open only to returning nationals and residents” and “open only for commercial traffic only”.
- The totals are relative to the monitored Points of Entry.