



EMERGENCY TRACKING TOOL (ETT)

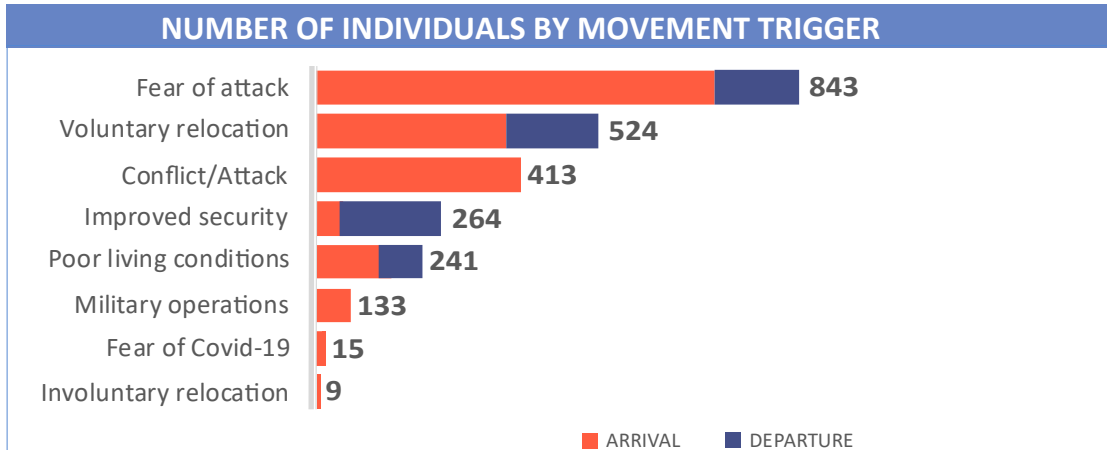
DTM Emergency Tracking Tool (ETT) is deployed to track and provide up-to-date information on sudden displacement and other population movements

ETT Report: No. 176 | 15 - 21 June 2020

MOVEMENTS	NEW ARRIVAL SCREENING BY NUTRITION PARTNERS
<p>Arrivals: 1,809 individuals</p> <p>Departures: 633 individuals</p>	<p>116 Children (6-59 months) screened for malnutrition</p> <p>MUAC category of screened children</p> <p>Green: 100 Yellow: 13 Red: 3</p>

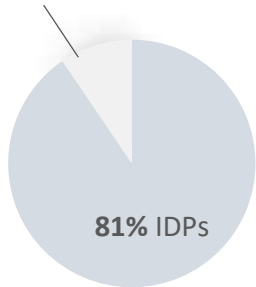
A total of 2,442 movements were recorded, comprising 1,809 arrivals and 633 departures, between 15 and 21 June 2020. Arrivals were recorded at locations in Askira/Uba, Bama, Biu, Dikwa, Gubio, Gwoza, Mobbar and Ngala Local Government Areas (LGAs) of the most-affected Nigerian State of Borno. Arrivals were also recorded in Gombi, Hong, Lamurde, Madagali, Maiha, Michika, Mubi North, Numan, Song, Yola North and Yola South LGAs of the state of Adamawa. Departures were recorded in Askira/Uba, Damboa, Gwoza and Maiduguri Metropolitan Council LGAs of Borno; Fufore, Hong, Lamurde, Madagali, Maiha, Michika, Mubi North, Mubi South, Numan and Song LGAs of Adamawa.

ETT assessments identified the following movement triggers: fear of attack (34.5%), voluntary relocation (21.5%), conflict/attack (16.9%), improved security (10.8%), poor living conditions (9.9%), military operations (5.4%), fear of covid-19 (0.5%) and involuntary relocation (0.4%).



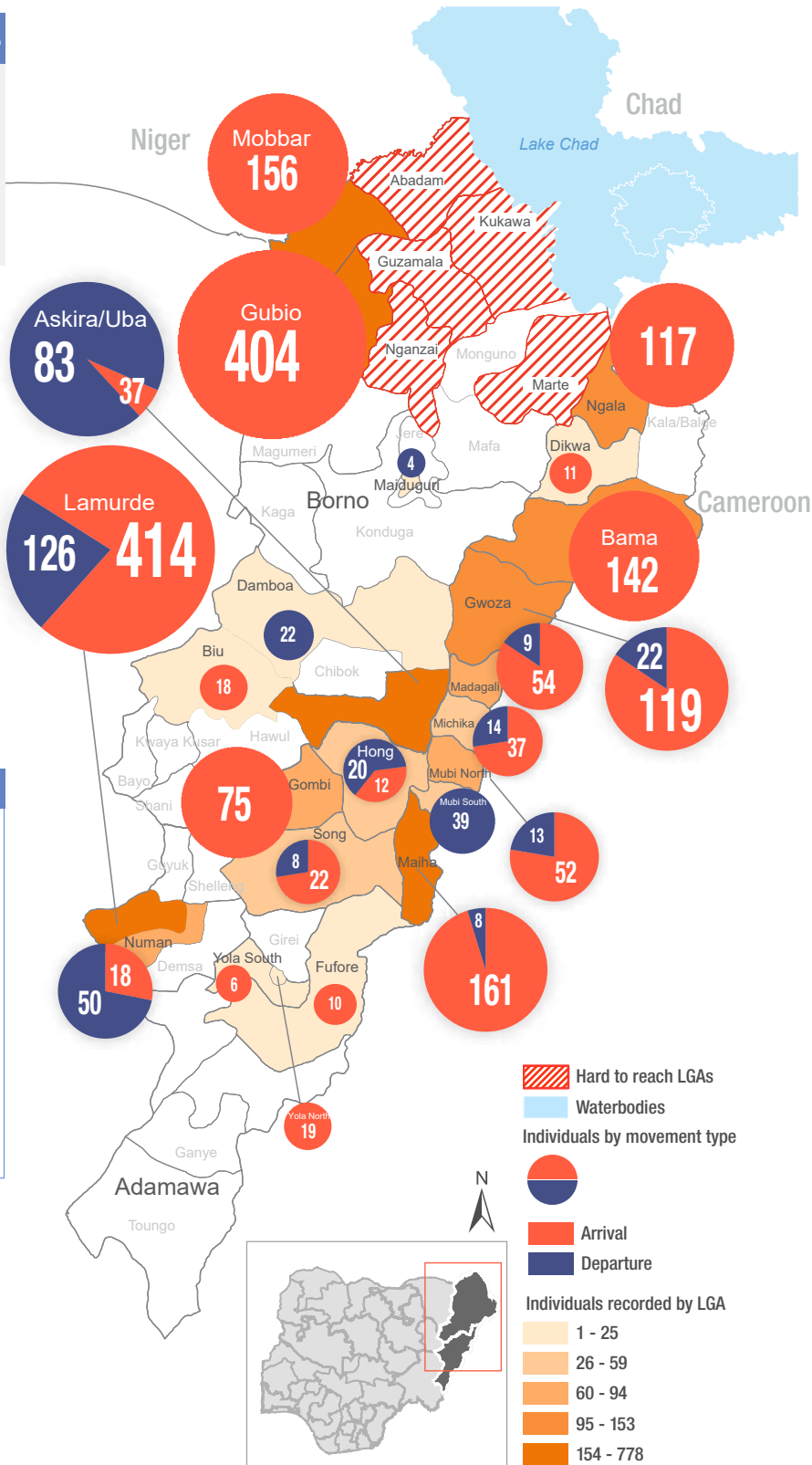
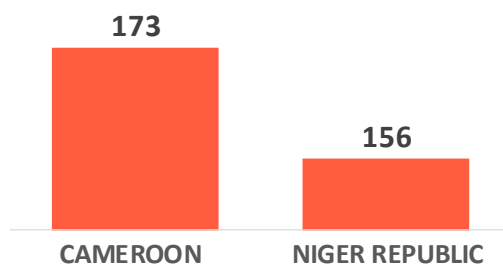
Affected Population

19% Returnees



81% IDPs

Arrivals from Neighboring Countries



* Movements in Kala/Balge were captured by ETT outreach staff in the LGA

SUMMARY OF MAJOR MOVEMENTS

Lamurde: 414 arrivals and 126 departures were recorded in Lamurde LGA of Adamawa state. All arrivals recorded were from Dumna ward of Guyuk LGA in Adamawa state. All 126 departures recorded were from Waduku ward of Lamurde LGA in Adamawa state. 77 per cent of the movements recorded were as a result of fear of attack and 23 per cent due to improved security.

Gubio: 404 arrivals were recorded in Gubio LGA of Borno state. All arrivals were from Felo ward of Gubio LGA in Borno state. All movements recorded were triggered by conflict/attack.

Askira/Uba: 17 arrivals and 243 departures were recorded in Askira/Uba LGA of Borno state. The arrivals included 10 from Mubi south LGA and 7 from Hong LGA in Adamawa state. The departures included 142 from Maiha LGA, 37 from Mayo Belwa LGA, 17 from Gombi LGA and 4 from Michika LGA in Adamawa state. 43 departures were also recorded from Askira/Uba and Chibok LGAs in Borno state. 55 per cent of the movements were as a result of fear of attack, 16 per cent from improved security, 15 per cent from voluntary relocation and 14 per cent were as a result of poor living conditions.

Maiha: 161 arrivals and 8 departures were recorded in Maiha LGA of Adamawa state. The arrivals included 147 from Askira/Uba LGA in Borno state and 14 from Maiha LGA in Adamawa state. All departures were from Maiha LGA in Adamawa state. 87 per cent of the movement was due to fear of attack, 8 per cent from poor living conditions and 5 per cent relocated voluntarily.

NEW ARRIVAL MALNUTRITION SCREENING SUMMARY (CHILDREN 6-59 MONTHS)

An exhaustive nutrition screening using mid-upper arm circumference (MUAC) and Oedema for acute malnutrition was conducted by Sector partners for 116 children of 6-59 months. Of the 116 children screened, the MUAC reading was 3 children (1 in In-accessible and 2 in accessible areas) in the Red category, 13 were in the Yellow category and 100 were measured in the Green category. No case of Oedema was reported in the 4 LGAs that we received reports from.

The results also include 71 children from neighboring countries (16 in Bama, 13 in Gwoza, 30 in Mobbar and 12 in Ngala). Of all the 71 children measured, 2 children were in the Red category with 59 in the Green category and the remaining 10 in the Yellow category. All children found with acute malnutrition have been admitted for treatment. Please note, the data presented are not surveillance results and should be interpreted with caution.

LGA	MUAC Categories						Total
	Green (>12.5cm)		Yellow (11.5cm - 12.5cm)		Red (<11.5cm)		
	Inaccessible	Accessible	Inaccessible	Accessible	Inaccessible	Accessible	
Bama	11	18	0	0	1	0	20
Gwoza	2	23	0	1	0	0	26
Mobbar	0	29	0	6	0	0	35
Ngala	6	11	0	6	0	2	25
Total	19	81	0	13	1	2	116

■ Nourished

■ Moderate Acute Malnutrition (MAM)

■ Severe Acute Malnutrition (SAM)

Please note, the data presented are not surveillance results and should be interpreted with caution.

Table 1. Details of movements by locations of assessment and locations of arrival / departure - only movements with at least 14 persons are listed below

Tracking location			Movement location			ARRIVAL	DEPARTURE	GRAND TOTAL
STATE	LGA	WARD	STATE	LGA	WARD			
ADAMAWA	FUFORE	FUFORE	ADAMAWA	MICHIKA	MICHIKA I	19	-	19
	GOMBI	GOMBI SOUTH	ADAMAWA	GUYUK	DUMNA	30	-	30
	HONG	DAKSIRI	BORNO	ASKIRA/UBA	HUSARA / TAMPUL	17	-	17
	MADAGALI	K/WUROGAYANDI	ADAMAWA	HONG	HONG	-	20	20
	MAIHA	SORAU 'A'	ADAMAWA	MADAGALI	DUHU/SHUWA	-	31	31
		MAYONGULI	BORNO	ASKIRA/UBA	WAMDEO / GIWI	147	-	147
	MICHIKA	MICHIKA I	ADAMAWA	MAIHA	BELEL	14	-	14
			ADAMAWA	YOLA SOUTH	NAMTARI	-	14	14
	MUBI NORTH	YELWA	ADAMAWA	GOMBI	GOMBI NORTH	17	-	17
		BETSO	ADAMAWA	MADAGALI	K/WUROGAYANDI	33	-	33
	MUBI SOUTH	NASARAWO	ADAMAWA	MADAGALI	K/WUROGAYANDI	19	-	19
	NUMAN	IMBURU	ADAMAWA	LAMURDE	WADUKU	-	29	29
		SABON PEGI	ADAMAWA	GUYUK	GUYUK	18	-	18
LAMURDE	LAFIYA	ADAMAWA	LAMURDE	WADUKU	-	21	21	
		ADAMAWA	LAMURDE	WADUKU	-	126	126	
			GUYUK	DUMNA	414	-	414	
BORNO	ASKIRA/UBA	ASKIRA EAST	BORNO	CHIBOK	GATAMARWA	-	24	24
		WAMDEO / GIWI	BORNO	MAIHA	SORAU 'A'	-	142	142
		HUSARA / TAMPUL	ADAMAWA	GOMBI	GOMBI SOUTH	-	17	17
		ZADAWA / HAUSARI	ADAMAWA	MAYO BELWA	MAYO BELWA	-	37	37
	GWOZA	PULKA/BOKKO	BORNO	ASKIRA/UBA	NGOHI	-	19	19
			BORNO	BAMA	DIPCHARI/JERE/DAR-JAMAL/KOTEMBE	20	-	20
			CAMEROON	MARWA	MORA	49	-	49
	MADAGALI	K/WUROGAYANDI	BORNO	GWOZA	KURANA BASA/NGOSHE SAMA	14	-	14
			ADAMAWA	MUBI SOUTH	NASSARAWO	-	23	23
	MOBBAR	DAMASAK	NIGER REPUBLIC	DIFFA	SHETTIMARI	156	-	156
	BAMA	SHEHURI / HAUSARI / MAIRI	BORNO	BAMA	SABSABWA/SOYE/BULONGU	67	-	67
			BORNO	JERE	NGOMARI	55	-	55
			CAMEROON	MARWA	MAYO TSANGYA	20	-	20
	DAMBOA	DAMBOA	BORNO	DAMBOA	AZUR/MULTE/FORFOR	-	22	22
	NGALA	NGALA WARD	BORNO	NGALA	WARSHELE	24	-	24
			CAMEROON	MARWA	WAZA	93	-	93
	GUBIO	GUBIO I	BORNO	GUBIO	FELO	98	-	98
GUBIO II		BORNO	GUBIO	FELO	306	-	306	
BIU	ZARAWUYAKU	BORNO	BIU	ZARAWUYAKU	18	-	18	

The depiction and use of boundaries, geographic names, and related data shown on maps and included in this report are not warranted to be error free nor do they imply judgment on the legal status of any territory, or any endorsement or acceptance of such boundaries by IOM.

When quoting, paraphrasing or in anyway using the information mentioned in this report, the source needs to be stated appropriately as follows: "Source: International Organization for Migration [month, year], Displacement Tracking Matrix (DTM)".

* MUAC data is provided by UNICEF

For more information or to report an alert, please contact:

Henry Kwenin, DTM Project Coordinator: hkwenin@iom.int | +234 903 8852 524

Dave Bercasio, Emergency Coordinator: dbercasio@iom.int | +234 907 5070 001

DTM information products: <http://dtm.iom.int/nigeria>

