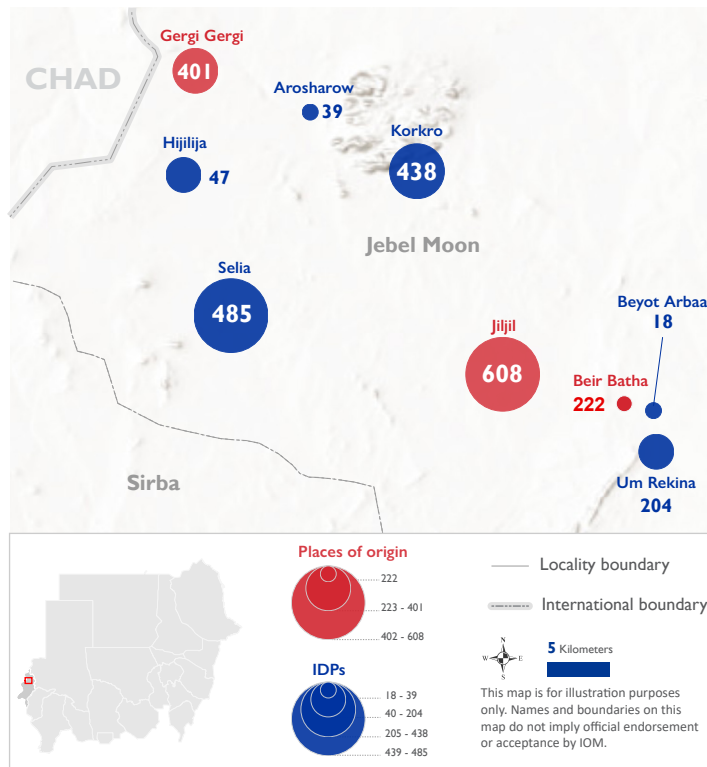


The DTM Emergency Event Tracking (EET) is deployed to track sudden displacement and population movements, provide more frequent updates on the scale of displacement and quantify the affected population when needed. As a subcomponent of the new Mobility Tracking methodology in Sudan ([Round Zero](#)), and activated on a need basis, EET utilises a broad network of key informants to capture best estimates of the affected population presence per location – a useful tool for humanitarian response planning and design.

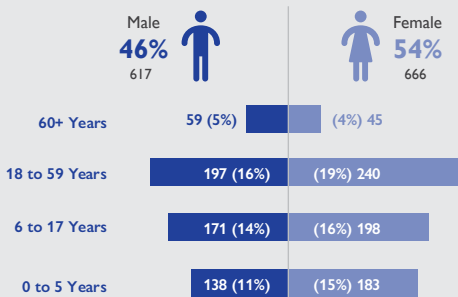
### Event Overview



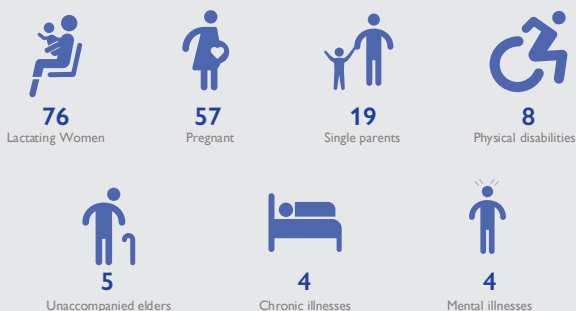
DTM teams activated EET to monitor the displacement of individuals affected by the inter-communal violence stemming from land disputes between nomads and returnee villages on 23 May and 4 June 2020 in Jebel Moon locality, West Darfur. The first EET update estimates a total number of 1,231 individuals (300 households) situated across six sites of displacement in Jebel Moon locality, having arrived from three locations of origin. The majority of the IDP caseload is situated in Selia (485), followed by Korkro (438), Um Rekina (204), Hijilija (47), Arosharow (39) and Beyot Arbaa (18). Field reports indicate food, shelter and security as the priority needs for affected and displaced populations.



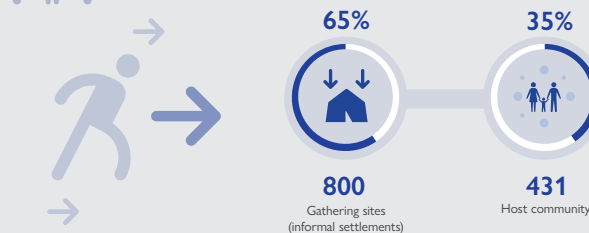
### Demographics



### Vulnerabilities



### Shelter Indicator



### Return Intention

Data collected through the return intention indicator suggests that 100% of the remaining IDPs intend to return to their locations of origin upon improvement of the security situation and the reconstruction of destroyed homes.

### IOM DISCLAIMER

The opinions expressed in the report are those of the authors and do not necessarily reflect the views of the International Organization for Migration (IOM). The designations employed and the presentation of material throughout the report do not imply the expression of any opinion whatsoever on the part of IOM concerning the legal status of any country, territory, city or area, or of its authorities, or concerning its frontiers or boundaries.

IOM is committed to the principle that humane and orderly migration benefits migrants and society. As an intergovernmental organization, IOM acts with its partners in the international community to: assist in the meeting of operational challenges of migration; advance understanding of migration issues; encourage social and economic development through migration; and uphold the human dignity and well-being of migrants.