



Legend	Total IDP Individuals
Primary Road	1 - 10,000
Secondary Road	10,001 - 30,000
Waterway	30,001 - 75,000
Waterbody	75,001 - 120,000

OVERVIEW OF DISPLACEMENT RRA Round 5 - Gedeo and West Guji Zones



Map Production Date : 19 Feb 2019
displacement.iom.int/ethiopia | dtmethiopia@iom.int

Source Data : ESRI, IOM, UNJLC

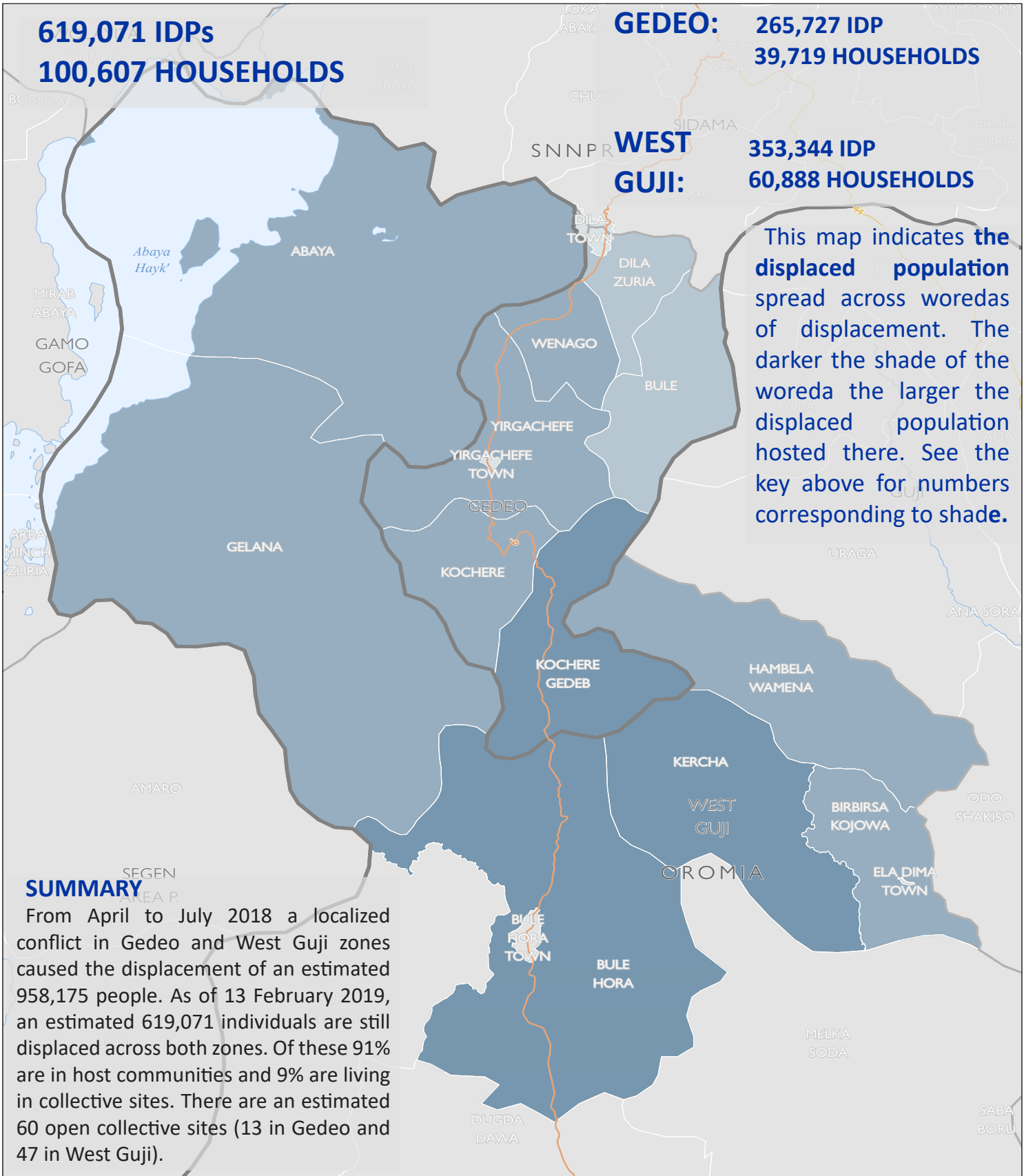
Disclaimer : This map is for illustration purposes only. Names and boundaries on this map do not imply official endorsement or acceptance by IOM.

619,071 IDPs
100,607 HOUSEHOLDS

GEDEO: 265,727 IDP
39,719 HOUSEHOLDS

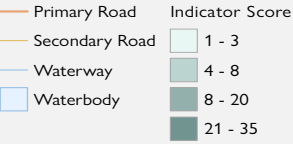
WEST GUJI: 353,344 IDP
60,888 HOUSEHOLDS

This map indicates the displaced population spread across woredas of displacement. The darker the shade of the woreda the larger the displaced population hosted there. See the key above for numbers corresponding to shade.



SUMMARY

From April to July 2018 a localized conflict in Gedeo and West Guji zones in Ethiopia caused the displacement of an estimated 958,175 people. As of 13 February 2019, an estimated 619,071 individuals are still displaced across both zones. Of these 91% are in host communities and 9% are living in collective sites. There are an estimated 60 open collective sites (13 in Gedeo and 47 in West Guji).



OVERVIEW OF DISPLACEMENT NEEDS RRA Round 5 - Gedeeo and West Guji Zones

1:550,000 1 cm = 6 km



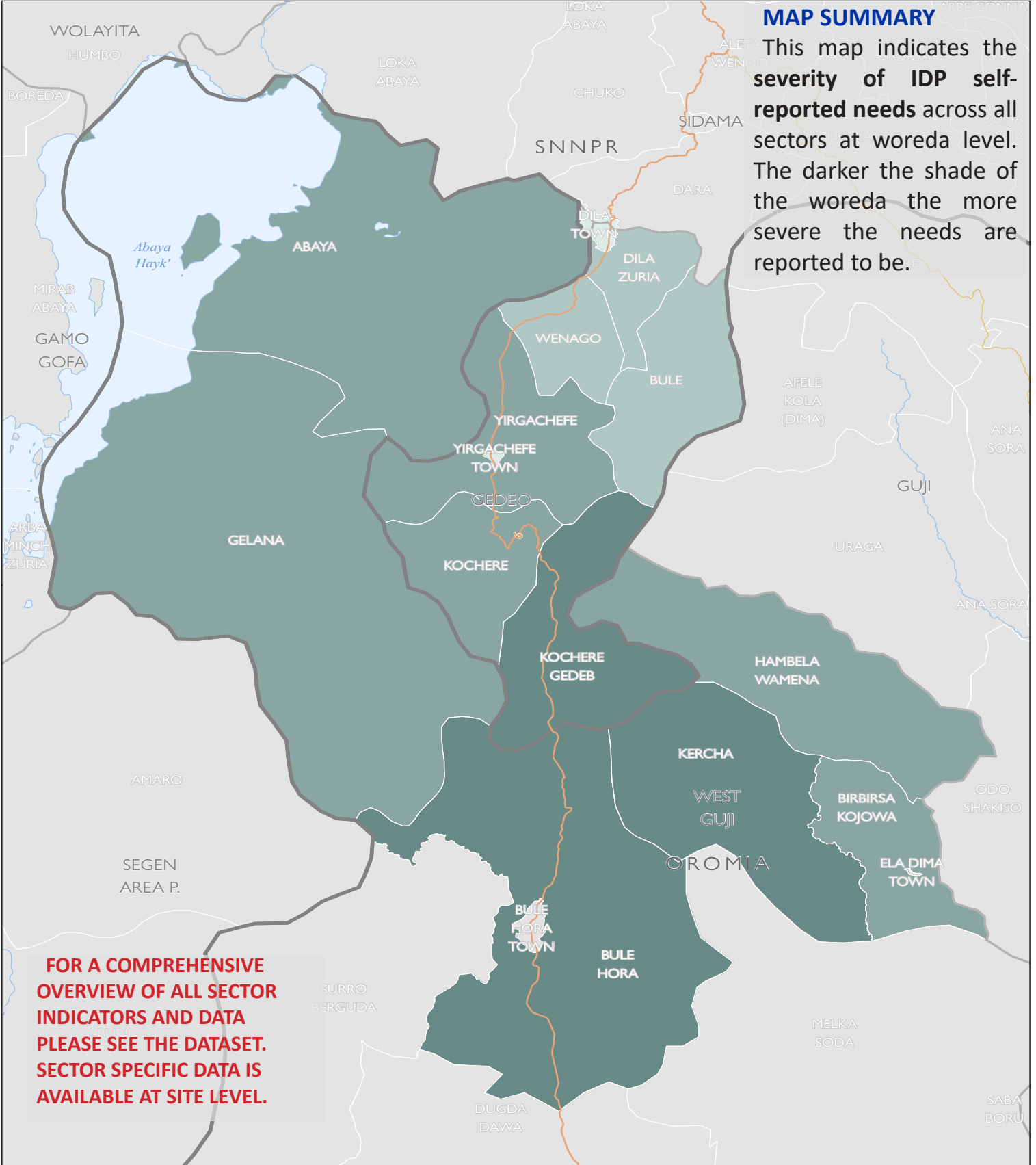
Map Production Date : 19 Feb 2019
displacement.iom.int/ethiopia | dtmethiopia@iom.int

Source Data : ESRI, IOM, UNJLC

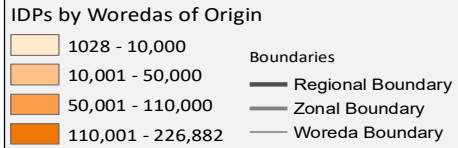
Disclaimer : This map is for illustration purposes only. Names and boundaries on this map do not imply official endorsement or acceptance by IOM.

MAP SUMMARY

This map indicates the severity of IDP self-reported needs across all sectors at woreda level. The darker the shade of the woreda the more severe the needs are reported to be.



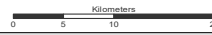
FOR A COMPREHENSIVE OVERVIEW OF ALL SECTOR INDICATORS AND DATA PLEASE SEE THE DATASET. SECTOR SPECIFIC DATA IS AVAILABLE AT SITE LEVEL.



OVERVIEW OF DISPLACEMENT

RRA Round 5 Gedeo and Guji zones

1:750,000 1 cm = 8 km



Source Data : ESRI, IOM, UNJLC

Disclaimer : This map is for illustration purposes only. Names and boundaries on this map do not imply official endorsement or acceptance by IOM.

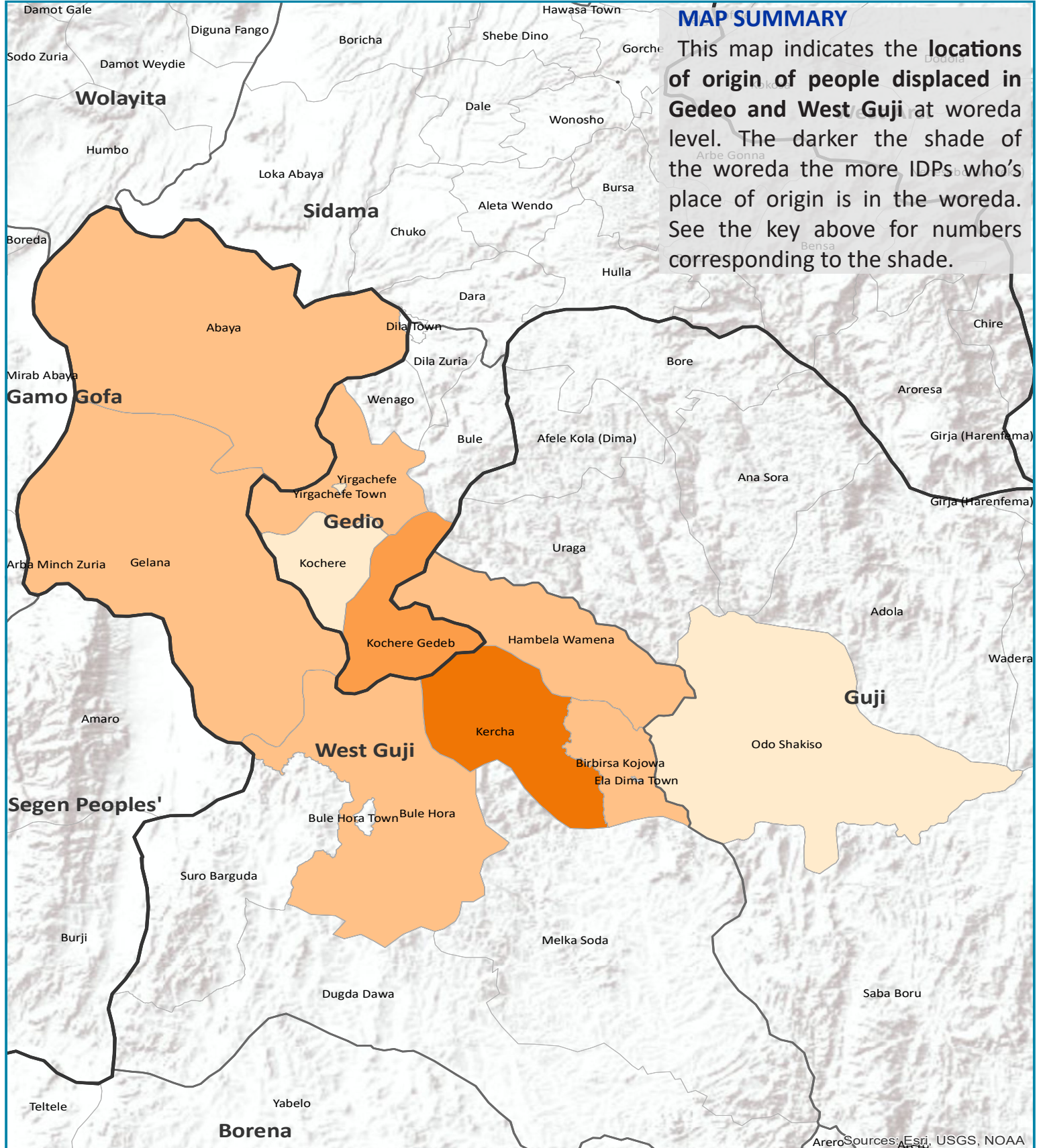


Map Production Date : 21 Feb 2019

displacement.iom.int/ethiopia | dtmethiopia@iom.int

MAP SUMMARY

This map indicates the **locations of origin of people displaced in Gedeo and West Guji** at woreda level. The darker the shade of the woreda the more IDPs who's place of origin is in the woreda. See the key above for numbers corresponding to the shade.



Displacement Overview: Gedeo and West Guji

DTM Rapid Response Assessment (RRA) round 5, conducted from 1-13 February 2019, captured data on internally displaced people (IDPs) in 60 collective sites and 240 host communities spread across 15 woredas in Gedeo and West Guji zones. As the map on page one indicates, Gedeb, Kercha and Bule Hora are the woredas currently hosting the largest numbers of IDPs.

Gedeb is host to 108,856 displaced people. Of these 21,634 (20%) are in collective sites and 87,222 (80%) are living in host communities. Since RRA round 4 (conducted in November 2018) there has only been a minor increase in the number of IDPs in the woreda, 1,995 individuals in total. However, while this is the case, a large increase in the number of individuals in collective sites has been observed since round 4. This coincides with a similarly large decrease in the number of individuals in host communities.

Kercha is host to 80,238 displaced people. Of these 12,844 (16%) are in collective sites and 67,394 (84%) are in host communities. Since RRA round 4 a large decrease in the number of displaced people in Kercha has been observed, 53,532 individuals. Similar to the movements observed in Gedeb, a large increase in the number of individuals in collective sites has been observed since round 4, coinciding with a large decrease in the number of individuals in host communities.

Bule Hora is host to 76,414 displaced people. Of these 17,957 (23%) are in collective sites and 58,457 (77%) are in host communities. Since RRA round 4 there has been an increase of 7,388 IDPs in Bule Hora. While the number of individuals in collective sites has increased slightly since round 4, the majority of the increase in IDPs is observed in host communities.

For further information, data, analysis and questions please feel free to contact the DTM Ethiopia Team in Addis Ababa at dtmethiopia@iom.int or visit the DTM Ethiopia website: displacement.iom.int/ethiopia

Needs Overview: Gedeo and West Guji

DTM RRA round 4 captured data on the self-reported needs of IDPs at site level. This data was aggregated at woreda level to produce the map on page 2 which displays the severity of self-reported needs at woreda level. While IDPs in most woredas reported significant needs in terms of WASH, shelter, NFIs, food, nutrition, health, education and protection; Gedeb, Kercha and Bule Hora were reported to be woredas where the needs of IDPs were most severe. DTM enumerators also observed significant levels of assessment fatigue related to IDPs' self-reported unmet needs. Assessment fatigue manifested in IDPs expressing frustration and hostility at the frequent needs assessments conducted while they perceived low levels of response.

Methodology

The Rapid Response Assessment is conducted at site level on a monthly basis. The tool is designed to capture timely data on displacement to inform emergency responses and involves site and host community visits conducted by DTM enumerators who are supervised by DTM field project assistants. In Gedeo and West Guji the assessment is conducted over the course of ten days. Site visits are often conducted in coordination with local and regional authorities who facilitate access to sites and host communities. The involvement of local and regional authorities also helps to facilitate the endorsement of DTM data by ensuring transparent and observed data collection at site level.

Data is collected from key informants and through focus group discussions. DTM key informants include a wide range of individuals such as teachers, local health workers, IDP community leaders and many more. Key informants are selected based on their sphere of knowledge, access to the site and displaced community and credibility. Focus group discussions are conducted with members of the IDP community who represent different demographic fields. Household samples and a demographic calculator are used to collect information on age and sex breakdowns.

Annex 1
Displacement Tracking Matrix (DTM) Gedio/West Guji RRA R5- Summary Table of Displacement

Round	Region	Zone	Woreda	Collective Site			Host Community			Total HH	Total Individuals	Total Sites	
				HH	Individuals	# of Sites	HH	Individuals	# of Host Communities				
RRA R5 (February 2019)	Oromia	West Guji	Abaya	29	200	1	7,344	40,494	18	7,373	40,694	19	
	Oromia	West Guji	Birbirs Kojowa	-	-	-	6,691	31,060	8	6,691	31,060	8	
	Oromia	West Guji	Bule Hora	2,662	17,957	9	8,441	58,457	21	11,103	76,414	30	
	Oromia	West Guji	Hambela Wamena	614	4,464	5	5,600	29,488	7	6,214	33,952	12	
	Oromia	West Guji	Kerca	2,131	12,844	17	12,167	67,394	24	14,298	80,238	41	
	Oromia	West Guji	Galana	-	-	-	10,518	60,017	14	10,518	60,017	14	
	Oromia	West Guji	Kerca Town	1,815	13,664	8	-	-	-	1,815	13,664	8	
	West Guji Total				7,251	49,129	40	50,761	286,910	92	58,012	336,039	132
	Oromia Total				7,251	49,129	40	50,761	286,910	92	58,012	336,039	132
	SNNPR	Gedio	Bule	-	-	-	2,460	15,373	22	2,460	15,373	22	
	SNNPR	Gedio	Dila Zuria	-	-	-	2,730	17,741	19	2,730	17,741	19	
	SNNPR	Gedio	Gedeb	3,057	21,634	11	11,974	87,222	17	15,031	108,856	28	
	SNNPR	Gedio	Kochere	-	-	-	5,073	35,903	22	5,073	35,903	22	
	SNNPR	Gedio	Wenago	-	-	-	5,601	34,342	21	5,601	34,342	21	
	SNNPR	Gedio	Yirga Chafe Town	-	-	-	630	2,951	2	630	2,951	2	
	SNNPR	Gedio	Yirgachefe	867	5,651	1	6,164	36,969	34	7,031	42,620	35	
	SNNPR	Gedio	Dilla Town	689	4,629	1	-	-	-	689	4,629	1	
	Gedio Total				4,613	31,914	13	34,632	230,501	137	39,245	262,415	150
	SNNPR Total				4,613	31,914	13	34,632	230,501	137	39,245	262,415	150
	RRA R4 * (November 2018)	Oromia	West Guji	Birbirs Kojowa	-	-	-	53	250	2	53	250	2
Oromia		West Guji	Kerca	1,539	13,444	7	1,284	3,611	3	2,823	17,055	10	
West Guji Total				1,539	13,444	7	1,337	3,861	5	2,876	17,305	12	
Oromia Total				1,539	13,444	7	1,337	3,861	5	2,876	17,305	12	
SNNPR		Gedio	Bule	-	-	-	474	3,312	6	474	3,312	6	
Gedio Total				-	-	-	474	3,312	6	474	3,312	6	
SNNPR Total				-	-	-	474	3,312	6	474	3,312	6	
Grand Total				13,403	94,487	60	87,204	524,584	240	100,607	619,071	300	

* Information for RRA Round 5 uncovered sites were extracted from previous round.