



# EMERGENCY TRACKING TOOL (ETT)

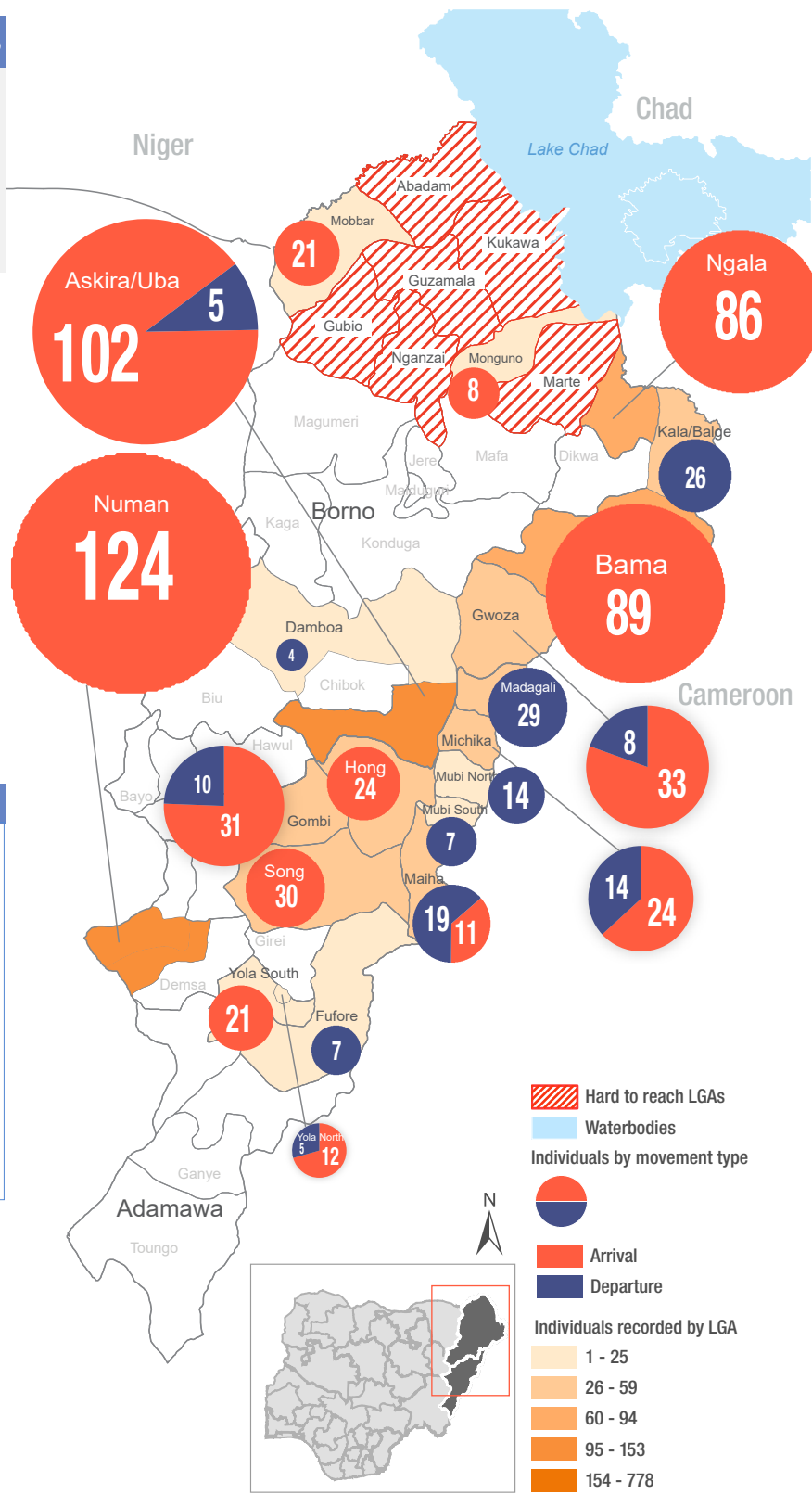
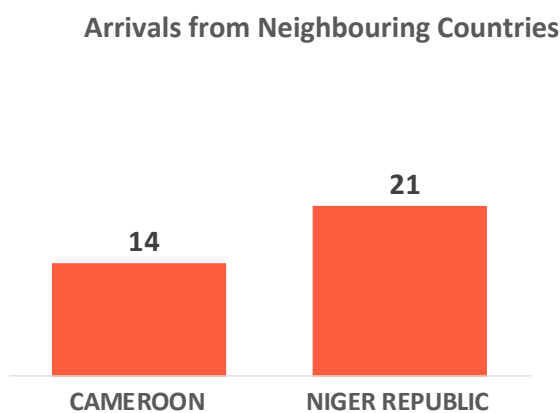
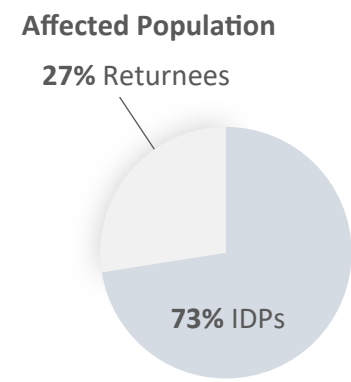
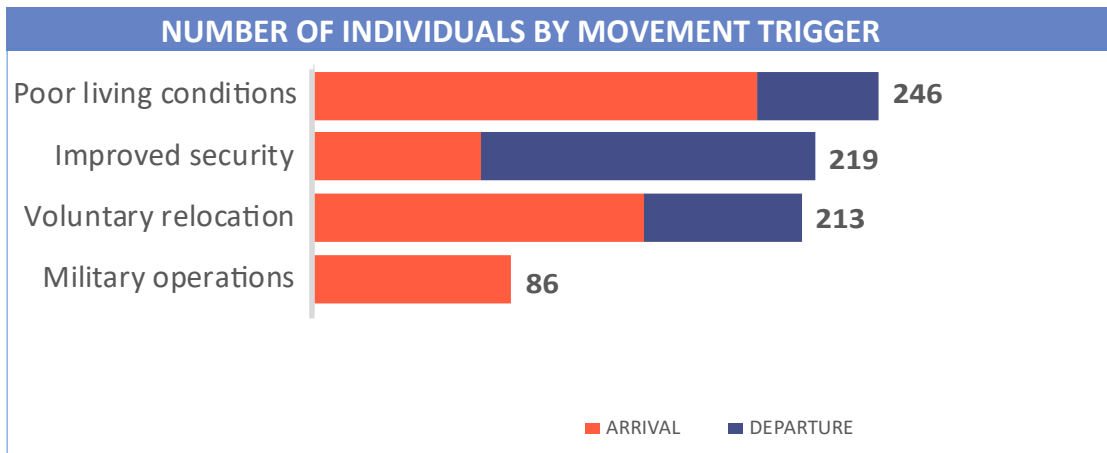
DTM Emergency Tracking Tool (ETT) is deployed to track and provide up-to-date information on sudden displacement and other population movements

## ETT Report: No. 173 | 25 - 31 May 2020

MOVEMENTS	NEW ARRIVAL SCREENING BY NUTRITION PARTNERS
<p><b>Arrivals:</b> 496 individuals</p> <p><b>Departures:</b> 268 individuals</p>	<p><b>52</b> Children (6-59 months) screened for malnutrition</p> <p><b>MUAC category of screened children</b></p> <p>Green: 48    Yellow: 4    Red: 0</p>

A total of 764 movements were recorded, composed of 496 arrivals and 268 departures, between 25 and 31 May 2020. Arrivals were recorded at locations in Askira/Uba, Gwoza, Mobbar, Ngala, Bama, Damboa and Monguno Local Government Areas (LGAs) of Borno. Arrivals were also recorded in Gombi, Hong, Maiha, Michika, Song, Yola North and Yola South LGAs of Adamawa. Departures were recorded in Askira/Uba, Gwoza and Kala Balge LGAs of Borno; Fufore, Gombi, Madagali, Maiha, Michika, Mubi North, Mubi South, Numan and Yola North. LGAs of Adamawa also recorded departures.

ETT assessments identified the following movement triggers: poor living conditions (32%), improved security (29%) voluntary relocation (28%) and military operations (11%).



\* Movements in Kala/Balge were captured by ETT outreach staff in the LGA

## SUMMARY OF MAJOR MOVEMENTS

**Numan:** 124 departures were recorded in Numan LGA of Adamawa state. The departures included 107 from Bolki ward in Numan LGA and 17 from Waduku ward in Lamurde LGA in Adamawa state. All of the movements recorded were as a result of improved security.

**Askira/Uba:** 102 arrivals and 5 departures were recorded in Askira/Uba LGA of Borno state. The arrivals included 65 from Uba and Hausara/Tampul wards in Askira/Uba LGA in Borno state. 37 arrivals were also recorded from Girei, Mubi South and Yola South LGAs in Adamawa state. All 5 departures were from Namtari ward in Yola South LGA of Adamawa state. 49 per cent of the movements were due to poor living conditions, 39 per cent improved security and 12 per cent voluntary relocations.

**Bama:** 89 arrivals were recorded in Bama LGA of Borno State. The arrivals included 65 from Bama LGA and 24 from Gwoza LGA of Borno state. 73 per cent of movements recorded were as a result of poor living conditions and 27 per cent voluntary relocations.

**Ngala:** 86 arrivals were recorded in Ngala LGA of Borno state. All arrivals recorded were from Mudu/Kaza ward in Dikwa LGA of Borno state. 7 arrivals were also recorded in Askira/Uba LGA of Borno state. All of the movements recorded were triggered by military operations.

## NEW ARRIVAL MALNUTRITION SCREENING SUMMARY (CHILDREN 6-59 MONTHS)

An exhaustive nutrition screening using mid upper arm circumference (MUAC) and Oedema for acute malnutrition was conducted by Sector partners for 52 children of 6-59 months. Of the 52 children screened, the MUAC reading was none for the Red category, 4 were in the Yellow category and 48 were measured in the Green category. No case of Oedema was reported in the 4 LGAs that we received reports from.

The results also include 10 children from neighbouring countries (3 in Bama and 7 in Mobbar); all 10 children measured were in the green category. children found with acute malnutrition have been admitted in the treatment programme. Please note, the data presented are not surveillance results and should be interpreted with caution.

LGA	MUAC Categories						Total
	Green (>12.5cm)		Yellow (11.5cm - 12.5cm)		Red (<11.5cm)		
	Inaccessible	Accessible	Inaccessible	Accessible	Inaccessible	Accessible	
Bama	13	8	2	0	0	0	23
Gwoza	0	3	0	0	0	0	3
Mobbar	0	7	0	0	0	0	7
Ngala	0	17	0	2	0	0	19
<b>Total</b>	<b>13</b>	<b>35</b>	<b>2</b>	<b>2</b>	<b>0</b>	<b>0</b>	<b>52</b>

■ Nourished     
 ■ Moderate Acute Malnutrition (MAM)     
 ■ Severe Acute Malnutrition (SAM)

*Please note, the data presented are not surveillance results and should be interpreted with caution.*

**Table 1. Details of movements by locations of assessment and locations of arrival / departure - only movements with at least 7 persons are listed below**

Tracking location			Movement location			ARRIVAL	DEPARTURE	GRAND TOTAL
STATE	LGA	WARD	STATE	LGA	WARD			
ADAMAWA	FUFORE	BETI	ADAMAWA	YOLA SOUTH	ADARAWO	-	7	23
	GOMBI	GOMBI SOUTH	ADAMAWA	MICHIKA	MICHIKA I	-	10	19
	GOMBI	GOMBI NORTH GARKIDA	ADAMAWA	DEMSA	DONG	18	-	16
				HONG	THILBANG	13	-	20
	HONG	HILDI GARAHA	ADAMAWA	MUBI NORTH	VIMTIM	15	-	18
				HONG	SHANGUI	9	-	14
	MADAGALI	GULAK MADAGALI	ADAMAWA	SONG	SONG WAJE	-	17	18
				MADAGALI	WAGGA	-	12	15
	MAIHA	MAYONGULI MANJEKIN	ADAMAWA	SONG	DUMNE	-	13	35
				MUBI NORTH	DIGIL	8	-	16
	MICHIKA	MADZI MINKISI/ WURO NGIKI	ADAMAWA	SONG	SONG WAJE	-	14	12
				HONG	UBA	24	-	19
	MUBI NORTH	YELWA	ADAMAWA	HONG	HILDI	-	14	14
	MUBI SOUTH	NASSARAWO	ADAMAWA	YOLA SOUTH	NAMTARI	-	7	16
	NUMAN	IMBURU SABON PEGI NUMAN I	ADAMAWA	LAMURDE	WADUKU	-	17	11
NUMAN				BOLKI	-	63	17	
				BOLKI	-	44	11	
SONG	DUMNE SONG WAJE	ADAMAWA	MAIHA	MAYONGULI	13	-	29	
			MADAGALI	GULAK	17	-	40	
YOLA NORTH	JAMBUTU	ADAMAWA	YOLA SOUTH	BOLE/YOLDE PATE	8	-	34	
BORNO	ASKIRA/UBA	ZADAWA / HAUSARI	ADAMAWA	MUBI SOUTH	LAMORDE	25	-	11
		CHUL/RUMIRGO	BORNO	ASKIRA/UBA	UBA	13	-	34
		DILLE/HUYIM	ADAMAWA	GIREI	MODIRE/VINIKILAN	8	-	89
		NGOHI	BORNO	ASKIRA/UBA	HUSARA / TAMPUL	52	-	15
	GWOZA	PULKA/BOKKO	BORNO	BAMA	SHEHURI / HAUSARI / MAIRI	-	8	31
				GWOZA	GWOZA WAKANE / BULABULIN	21	-	99
	GWOZA	GWOZA WAKANE / BULABULIN	CAMEROON	MARWA	MORA	9	-	66
	MOBBAR	DAMASAK	NIGER REPUBLIC	DIFFA	GAMAMARI	21	-	81
	NGALA	NGALA WARD	BORNO	DIKWA	MUDU/KAZA	86	-	20
	BAMA	SHEHURI / HAUSARI / MAIRI	BORNO	BAMA	DIPCHARI/JERE/ DAR-JAMAL/KOTEMBE	9	-	11
					SABSABWA/SOYE/BULONGU	56	-	106
				GWOZA	PULKA/BOKKO	19	-	14
	KALA BALGE	RANN "A"	BORNO	NGALA	NGALA WARD	-	26	25
MONGUNO	MONGUNO	BORNO	KUKAWA	KUKAWA	8	-	52	

The depiction and use of boundaries, geographic names, and related data shown on maps and included in this report are not warranted to be error free nor do they imply judgment on the legal status of any territory, or any endorsement or acceptance of such boundaries by IOM.

\*MUAC data is provided by UNICEF

For more information or to report an alert, please contact:

Henry Kwenin, DTM Project Coordinator: [hkwenin@iom.int](mailto:hkwenin@iom.int) | +234 903 8852 524

Dave Bercasio, Emergency Coordinator: [dbercasio@iom.int](mailto:dbercasio@iom.int) | +234 907 5070 001

DTM information products: <http://dtm.iom.int/nigeria>

