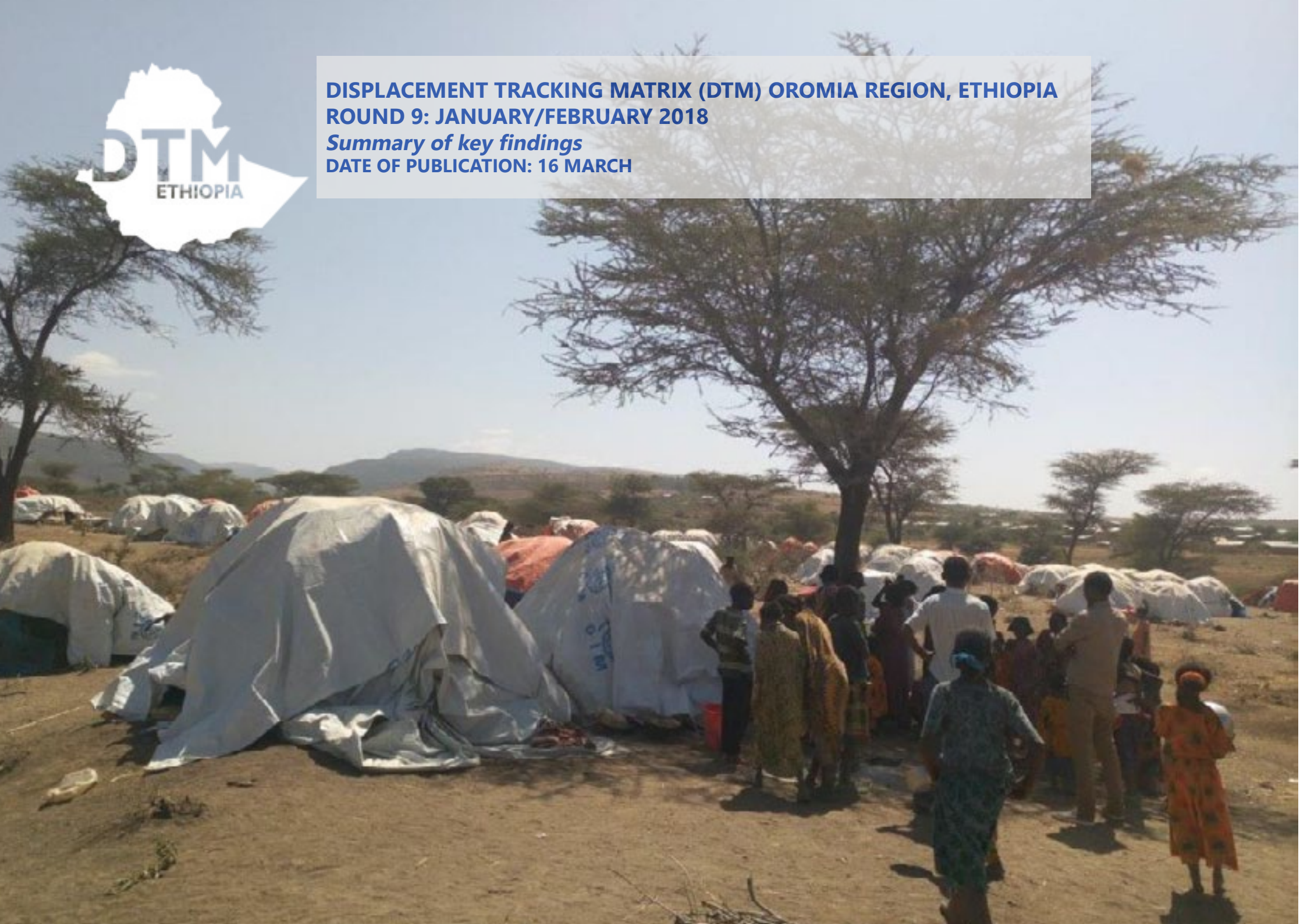


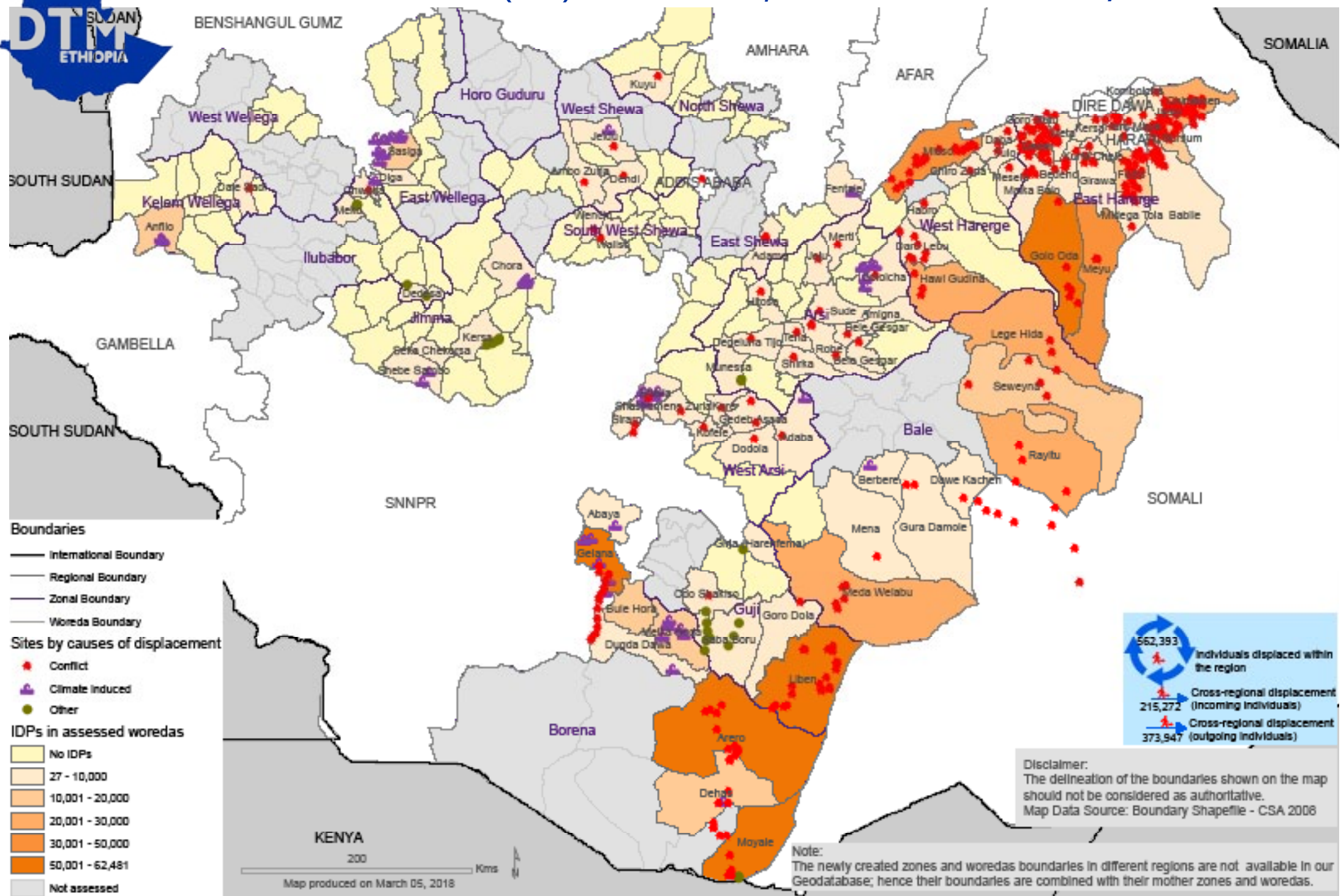


**DISPLACEMENT TRACKING MATRIX (DTM) OROMIA REGION, ETHIOPIA
ROUND 9: JANUARY/FEBRUARY 2018**

Summary of key findings
DATE OF PUBLICATION: 16 MARCH



DISPLACEMENT TRACKING MATRIX (DTM) OROMIA REGION, ETHIOPIA ROUND 9: JANUARY/FEBRUARY 2018



- Boundaries**
- International Boundary
 - Regional Boundary
 - Zonal Boundary
 - Woreda Boundary
- Sites by causes of displacement**
- Conflict
 - Climate induced
 - Other

- IDPs in assessed woredas**
- No IDPs
 - 27 - 10,000
 - 10,001 - 20,000
 - 20,001 - 30,000
 - 30,001 - 50,000
 - 50,001 - 62,481
 - Not assessed

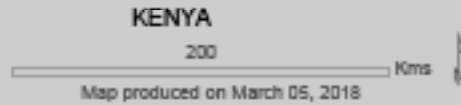
562,393 Individuals displaced within the region

215,272 Cross-regional displacement (Incoming Individuals)

373,947 Cross-regional displacement (Outgoing Individuals)

Disclaimer:
The delineation of the boundaries shown on the map should not be considered as authoritative.
Map Data Source: Boundary Shapefile - CSA 2008

Note:
The newly created zones and woredas boundaries in different regions are not available in our Geodatabase; hence their boundaries are combined with their mother zones and woredas.





DISPLACEMENT TRACKING MATRIX (DTM) OROMIA REGION ETHIOPIA

ROUND 9: JANUARY - FEBRUARY

OROMIA REGION - KEY FINDINGS

LOCATION AND CAUSE OF DISPLACEMENT:

777,665 displaced individuals comprising 126,920 households in 418 displacement sites were identified in Oromia region*. These figures represent an increase of 5,423 in the total individuals (+0.70%) an increase of 1,938 households(+1.55%) and 49 sites (+13.28%) since round 8 (November/December 2017). No new sites were identified in 2018. 84.69% sites opened in 2017. Conflict was the primary cause of displacement for an estimated 84% of the displaced population.

DEMOGRAPHICS: 51% of displaced individuals were female and 49% were male. 57% were younger than 18 years old. 5% were over 60 years old.

SHELTER: 40 sites reported that over 25% of households were living in shelters that were below standard.

WASH: Only 16 sites meet SPHERE standards of access to over 15 liters of water per person per day. 238 (57%) displacement sites reported having no toilets.

FOOD, NUTRITION AND LIVELIHOODS: 44 (11%) sites, representing 133,181 individuals, reported no access to food. 79% of sites reported that IDPs did not have access to income generating activities.

HEALTH: Pneumonia was the primary health concern in this round of data collection with 138 sites reporting this.

EDUCATION: In 47% of sites 50% or less of the children on site are attending school. Formal primary school education is available at 317 sites. Alternative basic education (ABE) is available at 16 sites.

COMMUNICATION: 42% of sites reported that site management were IDPs primary source of information followed by local leader at 27% of sites. Figure 1 illustrates trends in stock totals of displacement in the region over time compared to recent displacement. Figure 2 shows IDP numbers disaggregated by cause over time.

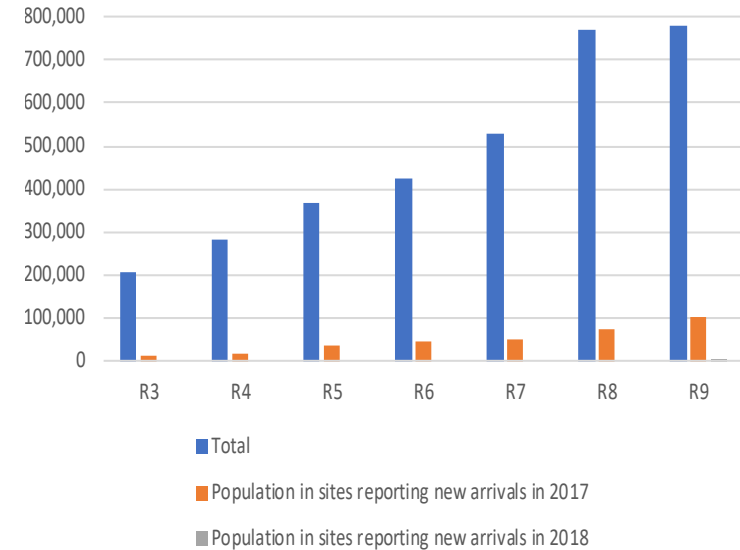


Figure 1: Trends in stock totals of displacement and new displacements from 2017 and 2018

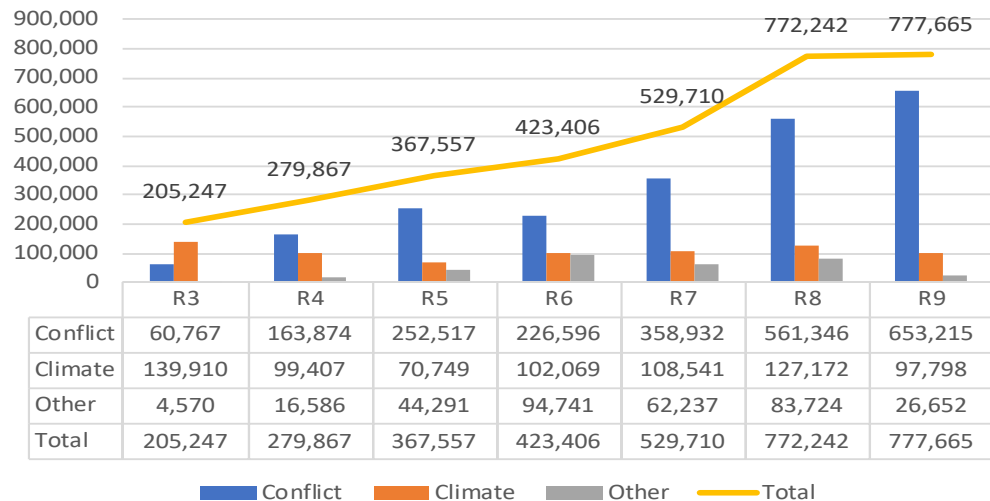


Figure 2: IDPs by cause of displacement by round



DISPLACEMENT TRACKING MATRIX (DTM) OROMIA REGION ETHIOPIA ROUND 9: JANUARY - FEBRUARY

MOBILITY TRENDS AND CAUSE OF DISPLACEMENT

At 16 of the 416 sites new IDP arrivals were recorded in 202018. At 211 sites, new arrivals arrivals were recorded in 2017.

None of the sites identified opened in 2018 but 84.69% opened between January and December 2017. 15.31% of sites opened before 2017.

Figure 3 shows the number of IDPs displaced by zone and cause of displacement. Figure 4 shows the distribution of IDPs by driver of displacement and time of displacement.

72.32% of IDPs in Oromia region are internally displaced within the region. Of the IDPs displaced within Oromia region, 63.34% were displaced within their zone of origin.

31% (239303) IDPs had reportedly been previously displaced. IDPs from 34 (8%) sites were leaving the site. Of these, IDPs from 33 sites were going to the nearest village and IDPs from 0 sites intended to return to their place of origin.

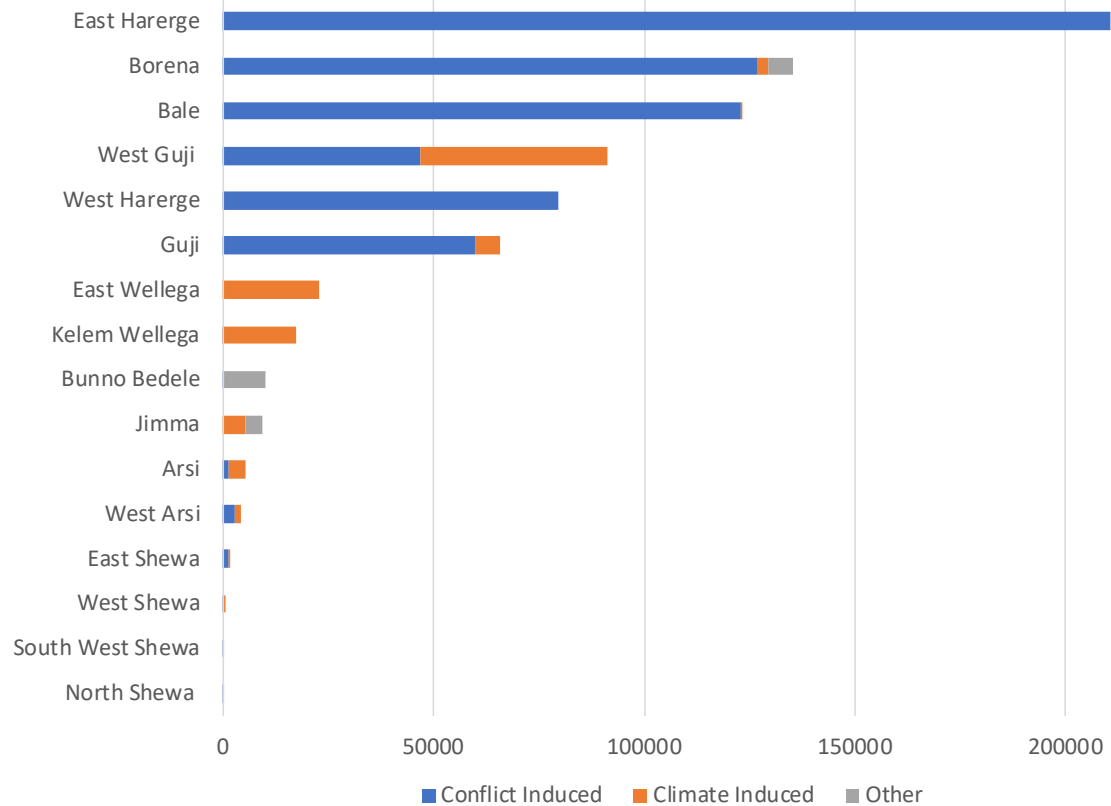


Figure 3: IDPs displaced by zone and cause of displacement

Site start date	Conflict		Climate		Other	
	Total affected population	% total population in sites reporting new arrivals 2017-2018	Total affected population	% total population in sites reporting new arrivals 2017-2018	Total affected population	% total population in sites reporting new arrivals 2017-2018
Before 2017	87,828	8%	88,493	7%	7,400	2%
Drunig 2017	565,384	15%	9,305	15%	19,252	12%

Figure 4: Distribution of IDPs by cause of displacement and time of displacement



DISPLACEMENT TRACKING MATRIX (DTM) OROMIA REGION ETHIOPIA

ROUND 9: JANUARY - FEBRUARY

DURABLE SOLUTIONS, VOULNERABILITIES AND DEMOGRAPHICS

At 55.26% of sites IDPs foresaw a resolution to their displacement, while IDPs at 43.78% of sites did not. At the remaining sites key informants either did not know (0.96%), or were not asked the question in a previous round.

At 27.99% of sites IDPs prefer reintegration as a durable solution to their displacement while 55.26% prefer relocation and 16.27% site prefer return. At 0.48% this information is unknown.

Figure 5 shows the percentage of sites reporting various obstacles to returns, while figure 6 shows support IDPs need to return or reintegrate.

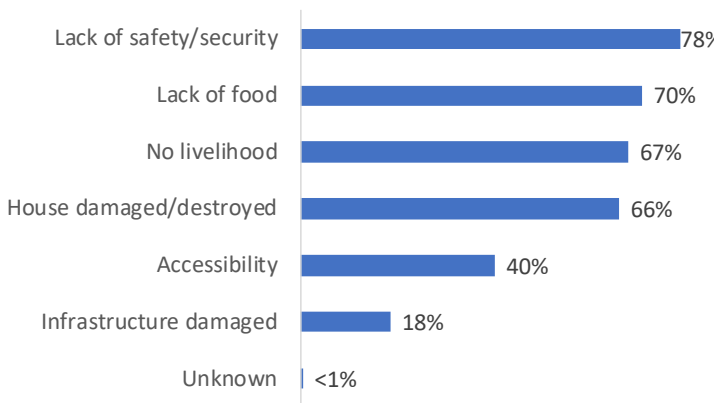


Figure 5: % Sites reporting obstacles to return

The demographic breakdown is shown in figure 7. Individuals with specific vulnerabilities were also reported at displacement sites and are represented in figure 8.

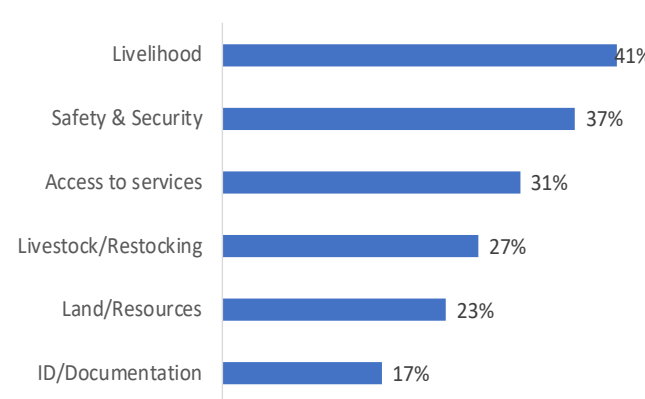


Figure 6: % Sites by support needed to return or reintegrate

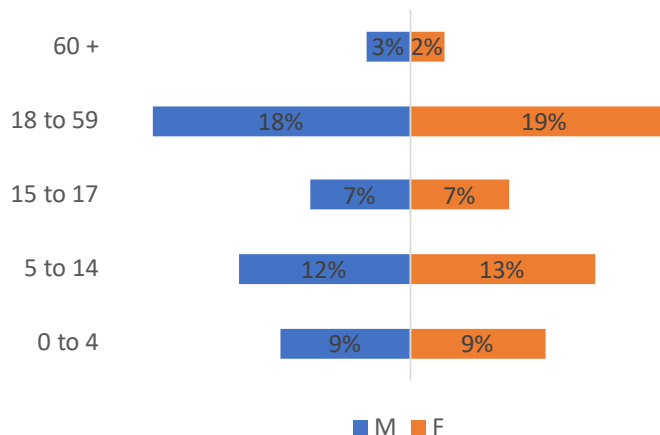


Figure 7: Demographic breakdown

Special Voulnerabilities	# Individuals
Pregnant girls # under 18	254
Pregnant Women # over 18	13,356
Breastfeeding Mothers #	24,050
Persons w/ Disabilities # under 18	684
Persons w/ Disabilities # over 18	1,152
Persons w/ Chronic Diseases/Serious Medical Conditions	645
Members of religious minorities #	772
Members of ethnic minorities #	98
Elderly Persons without care givers	10,222
Unaccompanied Children	238
Separated Children	652
Orphaned Children	336
Single-female headed Households	11,240
Single-male headed Households	2,665
Child headed Households	61
Elderly headed Households	7,191

Figure 4: Voulnerable populations



DISPLACEMENT TRACKING MATRIX (DTM) OROMIA REGION ETHIOPIA ROUND 9: JANUARY - FEBRUARY

INCREASE	NEW
DECREASE	UNCOVERED/CLOSED
NO CHANGE	

Zone	Woreda	Displacement Reason	Round 9			% change in estimated # of HHs	Round 8		
			HHs	Individuals	Sites		HHs	Individuals	Sites
Arsi	Amigna	Conflict	42	121	1	+31.25%	32	116	1
Arsi	Bele Gesgar	Conflict	31	93	1	+6.90%	29	72	1
Arsi	Degeluna Tijo	Conflict	39	105	1	+14.71%	34	99	1
Arsi	Degeluna Tijo	Other	-	-	-	UNCOVERED/CLOSED	1,203	6,015	8
Arsi	Gololcha Arsi	Climate Induced	617	3,085	6	-21.60%	787	3,935	6
Arsi	Gololcha Arsi	Conflict	30	99	1	NO CHANGE	-	-	-
Arsi	Hitosa	Conflict	25	65	1	+4.17%	24	58	1
Arsi	Jeju	Conflict	28	72	1	+7.69%	26	57	1
Arsi	Merti	Conflict	20	81	1	NO CHANGE	-	-	-
Arsi	Munessa	Other	180	900	2	-71.70%	636	3,180	3
Arsi	Robe	Conflict	127	308	3	+4.10%	122	301	3
Arsi	Seru	Climate Induced	-	-	-	UNCOVERED/CLOSED	64	320	1
Arsi	Shirka	Conflict	80	398	1	-61.54%	208	396	1
Arsi	Sude	Conflict	27	70	1	-12.90%	31	75	1
Arsi	Tena	Conflict	26	65	1	+23.81%	21	67	1
Arsi Total			1,272	5,462	21	-60.46%	3,217	14,691	29
Bale	Berberere	Climate Induced	42	103	1	+10.53%	38	83	1
Bale	Dawe Kachen	Conflict	962	7,085	5	+314.66%	232	1,826	1
Bale	Dawe Serar	Conflict	2,274	15,453	4	+34.96%	1,685	11,285	2



DISPLACEMENT TRACKING MATRIX (DTM) OROMIA REGION ETHIOPIA

ROUND 9: JANUARY - FEBRUARY

Zone	Woreda	Displacement Reason	Round 9			% change in estimated # of HHs	Round 8		
			HHs	Individuals	Sites		HHs	Individuals	Sites
Bale	Delo Mena	Conflict	-	-	-	UNCOVERED/CLOSED	728	7,073	1
Bale	Gura Damole	Conflict	1,397	7,671	2	+148.58%	562	2,992	1
Bale	Lege Hida	Conflict	3,844	26,329	2	NO CHANGE	3,844	26,335	4
Bale	Meda Welabu	Conflict	3,610	29,953	5	+5.99%	3,406	27,262	3
Bale	Mena	Conflict	969	7,556	1	NEW	-	-	-
Bale	Rayitu	Conflict	2,631	13,829	4	NO CHANGE	2,631	14,229	4
Bale	Seweyna	Conflict	2,587	15,113	5	+45.99%	1,772	9,599	3
Bale Total			18,316	123,092	29	+22.94%	14,898	100,684	20
Borena	Arero	Conflict	1,842	14,432	5	+15.92%	1,589	11,679	5
Borena	Dhaas	Climate Induced	362	2,426	1	-6.46%	387	3,135	1
Borena	Dhaas	Conflict	2,249	16,668	3	NO CHANGE	2,249	17,363	3
Borena	Guchi	Conflict	4,512	34,446	6	-2.00%	4,604	36,375	3
Borena	Guchi	Other	-	-	-	UNCOVERED/CLOSED	1,141	9,980	5
Borena	Moyale	Conflict	3,121	23,234	4	+106.42%	1,512	9,828	4
Borena	Moyale	Other	693	5,995	2	-70.64%	2,360	19,218	3
Borena	Wachile	Climate Induced	-	-	-	UNCOVERED/CLOSED	630	6,203	2
Borena	Wachile	Conflict	4,520	38,108	8	-11.48%	5,106	39,915	7
Borena	Wachile	Other	-	-	-	UNCOVERED/CLOSED	3,101	25,492	6
Borena Total			17,299	135,309	29	-23.72%	22,679	179,188	39
Bunno Bedele	Chwaka	Conflict	51	255	1	NEW	-	-	-



DISPLACEMENT TRACKING MATRIX (DTM) OROMIA REGION ETHIOPIA

ROUND 9: JANUARY - FEBRUARY

Zone	Woreda	Displacement Reason	Round 9			% change in estimated # of HHs	Round 8		
			HHs	Individuals	Sites		HHs	Individuals	Sites
Bunno Bedele	Dedesa	Other	628	2,614	2	-8.19%	684	3,668	2
Bunno Bedele	Mako	Other	984	7,284	3	NO CHANGE	984	6,354	3
Bunno Bedele Total			1,663	10,153	6	-0.30%	1,668	10,022	5
East Harerge	Babile	Conflict	1,830	9,150	16	+59.41%	1,148	5,734	13
East Harerge	Bedeno	Conflict	396	1,391	5	+35.62%	292	1,458	7
East Harerge	Chinaksen	Conflict	4,456	23,883	33	+14.52%	3,891	17,272	25
East Harerge	Deder	Conflict	3,758	18,790	29	+9.85%	3,421	17,117	27
East Harerge	Fedis	Conflict	3,316	16,579	10	+2.41%	3,238	10,598	9
East Harerge	Garo Muti	Conflict	380	1,900	4	+43.94%	264	997	3
East Harerge	Girawa	Conflict	354	1,715	4	+101.14%	176	883	5
East Harerge	Golo Oda	Conflict	34	171	1	NEW	-	-	-
East Harerge	Goro Gutu	Conflict	1,053	5,265	11	+72.62%	610	3,049	9
East Harerge	Gursum	Conflict	2,110	10,545	30	+30.01%	1,623	5,524	20
East Harerge	Harar Town	Conflict	906	4,530	1	-13.55%	1,048	4,531	1
East Harerge	Haro Maya	Conflict	226	1,130	5	+28.41%	176	662	3
East Harerge	Jarso	Conflict	1,354	8,100	2	-64.32%	3,795	18,975	2
East Harerge	Kersa	Conflict	619	3,095	1	+128.41%	271	841	2
East Harerge	Kombolcha	Conflict	32	160	1	-23.81%	42	118	1
East Harerge	Kumbi	Conflict	10,382	51,911	5	-30.67%	14,974	74,868	5
East Harerge	Kurfa Chele	Conflict	85	207	1	+304.76%	21	104	1



DISPLACEMENT TRACKING MATRIX (DTM) OROMIA REGION ETHIOPIA

ROUND 9: JANUARY - FEBRUARY

Zone	Woreda	Displacement Reason	Round 9			% change in estimated # of HHs	Round 8		
			HHs	Individuals	Sites		HHs	Individuals	Sites
East Harerge	Malka Balo	Conflict	736	3,680	7	+1500.00%	46	290	1
East Harerge	Meta	Conflict	1,196	5,980	3	+88.64%	634	2,379	2
East Harerge	Meyu Muluke	Conflict	6,907	34,535	2	NO CHANGE	6,907	34,535	2
East Harerge	Midega Tola	Conflict	1,574	7,871	10	+17.38%	1,341	9,230	6
East Harerge Total			41,704	210,588	181	-5.04%	43,918	209,165	144
East Shewa	Adama	Climate Induced	-	-	-	UNCOVERED/CLOSED	76	380	1
East Shewa	Adama	Conflict	296	1,161	2	-53.24%	633	3,165	2
East Shewa	Fentale	Climate Induced	119	585	1	-60.07%	298	1,490	4
East Shewa Total			415	1,746	3	-58.79%	1,007	5,035	7
East Wellega	Diga	Climate Induced	929	4,317	2	-49.89%	1,854	10,568	2
East Wellega	Sasiga	Climate Induced	4,319	18,616	8	NO CHANGE	4,319	23,362	3
East Wellega Total			5,248	22,933	10	-14.98%	6,173	33,930	5
Guji	Aga Wayu	Other	400	3,431	6	NO CHANGE	400	3,431	6
Guji	Girja (Harenfema)	Other	80	412	1	NO CHANGE	80	560	1
Guji	Goro Dola	Conflict	44	167	1	+46.67%	30	206	1
Guji	Gumi-Eldelo	Conflict	4,630	34,559	11	+5.47%	4,390	37,989	11
Guji	Liben	Conflict	2,772	22,885	8	-3.75%	2,880	25,135	8
Guji	Negele City Administration	Conflict	250	1,950	1	+25.00%	200	1,820	1
Guji	Odo Shakiso	Conflict	74	480	1	NEW	-	-	-
Guji	Saba Boru	Other	240	2,060	3	+9.09%	220	1,870	3



DISPLACEMENT TRACKING MATRIX (DTM) OROMIA REGION ETHIOPIA

ROUND 9: JANUARY - FEBRUARY

Zone	Woreda	Displacement Reason	Round 9			% change in estimated # of HHs	Round 8		
			HHs	Individuals	Sites		HHs	Individuals	Sites
Guji Total			8,490	65,944	32	+3.54%	8,200	71,011	31
Jimma	Botor Tollay	Climate Induced	1,167	5,143	6	NO CHANGE	1,167	5,143	6
Jimma	Kersa	Other	689	3,956	7	NO CHANGE	689	3,956	7
Jimma	Seka Chekorsa	Climate Induced	21	83	1	+5.00%	20	76	1
Jimma	Shebe Sambo	Climate Induced	25	234	1	+4.17%	24	162	1
Jimma Total			1,902	9,416	15	+0.11%	1,900	9,337	15
Kelem Wellega	Anfilo	Climate Induced	2,447	17,325	3	NO CHANGE	2,447	15,842	3
Kelem Wellega	Dale Sadi	Conflict	21	27	1	NEW	-	-	-
Kelem Wellega Total			2,468	17,352	4	+0.86%	2,447	15,842	3
North Shewa (R4)	Kuyu	Conflict	33	52	1	+32.00%	25	125	1
North Shewa (R4) Total			33	52	1	+32.00%	25	125	1
South West Shewa	Ilu	Climate Induced	-	-	-	UNCOVERED/CLOSED	21	105	1
South West Shewa	Waliso	Conflict	32	109	1	+10.34%	29	145	1
South West Shewa	Wenchi	Conflict	37	77	1	+15.63%	32	160	1
South West Shewa Total			69	186	2	-15.85%	82	410	3
West Arsi	Adaba	Climate Induced	34	170	1	-5.56%	36	180	1
West Arsi	Adaba	Conflict	91	248	1	+35.82%	67	335	1
West Arsi	Dodola	Conflict	46	220	1	+27.78%	36	180	1
West Arsi	Gedeb Asasa	Conflict	109	545	2	+6.86%	102	508	2
West Arsi	Kofele	Conflict	68	340	1	+47.83%	46	230	1



DISPLACEMENT TRACKING MATRIX (DTM) OROMIA REGION ETHIOPIA

ROUND 9: JANUARY - FEBRUARY

Zone	Woreda	Displacement Reason	Round 9			% change in estimated # of HHs	Round 8		
			HHs	Individuals	Sites		HHs	Individuals	Sites
West Arsi	Kore	Conflict	33	103	1	+10.00%	30	150	1
West Arsi	Shalla	Climate Induced	241	1,200	6	+26.84%	190	920	6
West Arsi	Shalla	Conflict	26	54	1	NEW	-	-	-
West Arsi	Shashemene Town	Conflict	57	285	1	NEW	-	-	-
West Arsi	Shashemene Zuria	Conflict	48	240	1	+41.18%	34	180	1
West Arsi	Siraro	Conflict	176	880	2	-0.56%	177	885	2
West Arsi Total			929	4,285	18	+29.39%	718	3,568	16
West Guji	Abaya	Climate Induced	1,017	7,857	2	+1.50%	1,002	7,664	2
West Guji	Dugeda Dawa	Climate Induced	56	490	1	+9.80%	51	548	1
West Guji	Galana	Climate Induced	2,680	22,158	4	-24.89%	3,568	28,587	3
West Guji	Galana	Conflict	3,778	31,746	7	+213.01%	1,207	9,789	3
West Guji	Melka Soda	Climate Induced	2,026	13,891	5	+8.46%	1,868	18,469	5
West Guji	Suro Barguda	Conflict	1,440	15,080	7	+80.00%	800	6,406	6
West Guji Total			10,997	91,222	26	+29.44%	8,496	71,463	20
West Harerge	Bordode	Conflict	2,815	14,075	11	+14.76%	2,453	12,265	10
West Harerge	Chiro Zuria	Conflict	726	3,630	1	-22.27%	934	4,670	1
West Harerge	Daro Lebu	Conflict	1,475	7,378	7	+1052.34%	128	641	1
West Harerge	Doba	Conflict	668	3,342	2	-16.19%	797	3,985	3
West Harerge	Habro	Conflict	70	350	1	NEW	-	-	-
West Harerge	Hawi Gudina	Conflict	4,626	23,130	3	NEW	-	-	-



DISPLACEMENT TRACKING MATRIX (DTM) OROMIA REGION ETHIOPIA ROUND 9: JANUARY - FEBRUARY

Zone	Woreda	Displacement Reason	Round 9			% change in estimated # of HHs	Round 8		
			HHs	Individuals	Sites		HHs	Individuals	Sites
West Harerge	Mesela	Conflict	646	3,230	1	-9.01%	710	3,550	1
West Harerge	Mieso	Conflict	4,286	21,430	10	+15.00%	3,727	18,635	10
West Harerge	Tulo	Conflict	594	2,940	1	-14.04%	691	3,455	1
West Harerge Total			15,906	79,505	37	+68.50%	9,440	47,201	27
West Shewa	Ambo Zuria	Conflict	66	113	1	+73.68%	38	190	1
West Shewa	Dendi	Conflict	39	64	1	+44.44%	27	135	1
West Shewa	Jeldu	Climate Induced	23	115	1	NEW	-	-	-
West Shewa	Jeldu	Conflict	81	128	1	+65.31%	49	245	2
West Shewa Total			209	420	4	+83.33%	114	570	4
Climate Induced Sum			16,125	97,798	50	-14.44%	18,847	127,172	51
Conflict Sum			106,901	653,215	342	+12.96%	94,637	561,346	271
Other Sum			3,894	26,652	26	-66.13%	11,498	83,724	47
Grand Total			126,920	777,665	418	+1.55%	124,982	772,242	369

Inaccessible Sites in Somali Region Round 9

Zone	Woreda	Site Name	Site ID	HH	Individuals	Driver	Round of last assessment
Guji	Aga Wayu	Bore Ubeti	OR295	100	890	Other	8
Guji	Aga Wayu	Chekat Kojoha	OR296	100	895	Other	8
Guji	Aga Wayu	Badesa Ulaulo	OR297	100	815	Other	8
West Harerge	Bordode	Gumbi	OR330	198	990	Conflict	8
Guji	Liben	Andereka	OR344	500	4550	Conflict	8
Guji	Liben	Jebaba	OR349	680	5542	Conflict	8
Guji	Liben	Keyno	OR351	580	4930	Conflict	8
West Guji	Suro Barguda	Agansa	OR377	60	504	Conflict	8
East Harerge	Chinaksen	Gola Wachu	OR439	200	1000	Conflict	6



DISPLACEMENT TRACKING MATRIX (DTM) OROMIA REGION ETHIOPIA

ROUND 9: JANUARY - FEBRUARY

Zone	Woreda	Site Name	Site ID	HH	Individuals	Driver	Round of last assessment
West Harerge	Bordode	Torban	OR453	265	1325	Conflict	8
Guji	Aga Wayu	Buri Karo	OR459	30	260	Other	8
Guji	Aga Wayu	Dawa	OR462	30	241	Other	8
Guji	Aga Wayu	Wacu Dima	OR465	40	330	Other	8
West Arsi	Shalla	Sade Guge	OR486	20	100	Flash Flood	8
Borena	Guchi	Anna Darimu	OR529	1357	9329	Conflict	8
East Harerge	Chinaksen	Walensu	OR640	65	343	Conflict	8



DISPLACEMENT TRACKING MATRIX (DTM) OROMIA REGION ETHIOPIA ROUND 9: JANUARY - FEBRUARY

ABOUT DTM

DTM GLOBAL

The Displacement Tracking Matrix (DTM) is a system to track and monitor displacement and population mobility. It is designed to regularly and systematically capture, process and disseminate information to provide a better understanding of the movements and evolving needs of displaced populations, whether on site or en route. More information is available at www.globaldtm.info.

DTM IN ETHIOPIA

In Ethiopia, data is collected at zone, woreda and site level. Since September 2016, nine rounds of assessments have been completed. The DTM programme is implemented in close collaboration with the National Disaster Risk Management Commission, regional, zonal and woreda counterparts and DTMs implementing partner, the Danish Refugee Council (DRC).

METHODOLOGY

IOM's DTM team composed of enumerators from IOM and DRC were deployed across the country to collect the data. The process involved the following steps:

Zone level: Interviews with key informants from

the Disaster Prevention and Preparedness Office (DPPO), community representatives, and the education and health offices collect information including (among others) estimated caseload of displaced population, identification of woredas within the zone that host displaced populations, reason for displacement, time of arrival of IDPs and location of origin.

Woreda level: Information is collected from key woreda informants and includes (among others) estimated length of stay, number of displaced households and individuals at woreda level, displaced population by type of temporary settlements and approximate locations of identifiable displacement sites. The information is used to plan site assessments.

Site assessments: In-depth IDP site assessments capture detailed information through key informant interviews, direct observation and focus group discussions with male, female, elderly, children and IDP representatives. Data on available services by sector, accessibility constraints, exact type, location and name of the site, place of origin of IDPs, estimated size and type of the site and most common type of shelter are captured. Age and gender disaggregation for the site is extrapolated using a demographic calculator

tool based on the age range and sex of the household members of 20 randomly selected households from the site.

For more information:

Mr. Dessalegn Gurmessa
National Program Officer-
IM/DTM – IOM Ethiopia
gdessalegn@iom.int

Ms. Nikki Herwanger
DTM Information
Management Officer - IOM
Ethiopia
nherwanger@iom.int



Humanitarian Aid
and Civil Protection



Schweizerische Eidgenossenschaft
Confédération suisse
Confederazione Svizzera
Confederaziun svizra

Swiss Agency for Development
and Cooperation SDC





International Organization for Migration (IOM)
The UN Migration Agency

ANNEX I : INTERNAL DISPLACEMENTS IN OROMIA REGION AS OF FEBRUARY 2018

Zone	Woreda	Sex	Age Groups					Total	HHs	Site Open Date	Cause	Duration
			Infants (0-4 y)	Children (5-14 y)	Youth (15-17 y)	Adults (18-59 y)	Elderly (60 +y)					
Arsi	Amigna	Male	8	16	5	37	-	66	42	18-Sep-17	Conflict	During 2017
Arsi	Amigna	Female	6	20	4	25	-	55				
Arsi	Bele Gesgar	Male	10	9	5	30	2	56	31	20-Sep-17	Conflict	During 2017
Arsi	Bele Gesgar	Female	8	10	3	16	-	37				
Arsi	Degeluna Tijo	Male	13	9	-	35	-	57	39	19-Sep-17	Conflict	During 2017
Arsi	Degeluna Tijo	Female	14	2	2	30	-	48				
Arsi	Gololcha Arsi	Male	322	424	242	477	70	1,535	617	01-May-16	Flash Flood	Before 2017
Arsi	Gololcha Arsi	Female	351	455	202	492	50	1,550				
Arsi	Gololcha Arsi	Male	4	11	7	26	1	49	30	18-Sep-17	Conflict	During 2017
Arsi	Gololcha Arsi	Female	8	19	4	19	-	50				
Arsi	Hitosa	Male	6	9	2	25	-	42	25	21-Sep-17	Conflict	During 2017
Arsi	Hitosa	Female	6	3	-	14	-	23				
Arsi	Jeju	Male	7	1	-	37	1	46	28	19-Sep-17	Conflict	During 2017
Arsi	Jeju	Female	9	5	-	12	-	26				
Arsi	Merti	Male	5	17	-	28	-	50	20	13-Sep-17	Conflict	During 2017
Arsi	Merti	Female	6	12	-	13	-	31				
Arsi	Munessa	Male	86	124	60	187	37	494	180	01-Dec-16	Other	Before 2017
Arsi	Munessa	Female	56	94	44	177	35	406				
Arsi	Robe	Male	24	30	4	103	-	161	127	19-Sep-17	Conflict	During 2017
Arsi	Robe	Female	33	42	7	65	-	147				
Arsi	Shirka	Male	54	20	3	190	-	267	80	17-Sep-17	Conflict	During 2017
Arsi	Shirka	Female	32	11	6	82	-	131				
Arsi	Sude	Male	7	7	2	26	-	42	27	19-Sep-17	Conflict	During 2017
Arsi	Sude	Female	5	10	-	13	-	28				
Arsi	Tena	Male	5	4	-	26	1	36	26	19-Sep-17	Conflict	During 2017
Arsi	Tena	Female	5	10	1	13	-	29				
Arsi Total			1,090	1,374	603	2,198	197	5,462	1,272			
Bale	Berbere	Male	10	6	8	31	4	59	42	24-Aug-17	Drought	During 2017
Bale	Berbere	Female	8	8	12	14	2	44				
Bale	Dawe Kachen	Male	91	110	164	475	73	913	232	12-Sep-17	Conflict	During 2017
Bale	Dawe Kachen	Female	110	91	109	530	73	913				
Bale	Dawe Kachen	Male	64	112	143	351	80	750	215	16-Dec-17	Conflict	During 2017
Bale	Dawe Kachen	Female	64	128	191	383	80	846				
Bale	Dawe Kachen	Male	156	117	136	390	98	897	248	21-Dec-17	Conflict	During 2017
Bale	Dawe Kachen	Female	156	175	195	448	78	1,052				
Bale	Dawe Kachen	Male	30	66	52	192	30	370	130	25-Dec-17	Conflict	During 2017
Bale	Dawe Kachen	Female	44	44	66	199	15	368				
Bale	Dawe Kachen	Male	59	88	10	254	29	440	137	27-Dec-17	Conflict	During 2017
Bale	Dawe Kachen	Female	78	107	49	263	39	536				
Bale	Dawe Serar	Male	540	648	972	2,808	432	5,400	1,588	01-Jan-16	Conflict	Before 2017
Bale	Dawe Serar	Female	648	540	648	3,132	432	5,400				
Bale	Dawe Serar	Male	119	119	95	261	47	641	198	17-Oct-17	Conflict	During 2017
Bale	Dawe Serar	Female	48	119	107	214	59	547				
Bale	Dawe Serar	Male	213	160	186	532	133	1,224	327	25-Nov-17	Conflict	During 2017
Bale	Dawe Serar	Female	213	239	266	612	106	1,436				
Bale	Dawe Serar	Male	32	56	73	177	40	378	161	16-Dec-17	Conflict	During 2017
Bale	Dawe Serar	Female	32	65	97	193	40	427				
Bale	Gura Damole	Male	299	299	239	658	120	1,615	562	07-Sep-17	Conflict	During 2017
Bale	Gura Damole	Female	120	299	269	539	150	1,377				
Bale	Gura Damole	Male	655	608	327	702	187	2,479	835	16-Sep-17	Conflict	During 2017
Bale	Gura Damole	Female	515	515	421	749	-	2,200				
Bale	Lege Hida	Male	387	332	387	1,106	221	2,433	821	21-Mar-17	Conflict	During 2017



International Organization for Migration (IOM)
The UN Migration Agency

ANNEX I : INTERNAL DISPLACEMENTS IN OROMIA REGION AS OF FEBRUARY 2018

Zone	Woreda	Sex	Age Groups					Total	HHs	Site Open Date	Cause	Duration
			Infants (0-4 y)	Children (5-14 y)	Youth (15-17 y)	Adults (18-59 y)	Elderly (60 +y)					
Bale	Lege Hida	Female	443	553	553	1,272	277	3,098				
Bale	Lege Hida	Male	1,248	1,040	1,456	5,615	1,040	10,399	3,023	01-Nov-17	Conflict	During 2017
Bale	Lege Hida	Female	1,248	1,040	1,248	5,823	1,040	10,399				
Bale	Meda Welabu	Male	392	687	883	2,159	491	4,612	1,206	08-Jun-17	Conflict	During 2017
Bale	Meda Welabu	Female	392	785	1,177	2,355	491	5,200				
Bale	Meda Welabu	Male	383	320	447	1,726	320	3,196	799	18-Oct-17	Conflict	During 2017
Bale	Meda Welabu	Female	383	320	383	1,790	320	3,196				
Bale	Meda Welabu	Male	466	292	466	1,340	233	2,797	729	23-Oct-17	Conflict	During 2017
Bale	Meda Welabu	Female	525	583	466	1,340	117	3,031				
Bale	Meda Welabu	Male	135	161	242	700	108	1,346	304	22-Dec-17	Conflict	During 2017
Bale	Meda Welabu	Female	161	135	161	780	108	1,345				
Bale	Meda Welabu	Male	523	523	418	1,151	209	2,824	572	28-Dec-17	Conflict	During 2017
Bale	Meda Welabu	Female	209	523	471	941	262	2,406				
Bale	Mena	Male	982	680	680	1,058	302	3,702	969	28-Oct-16	Conflict	Before 2017
Bale	Mena	Female	1,058	831	680	1,058	227	3,854				
Bale	Rayitu	Male	248	559	435	1,614	248	3,104	1,042	11-Mar-16	Conflict	Before 2017
Bale	Rayitu	Female	373	373	559	1,677	124	3,106				
Bale	Rayitu	Male	261	261	209	575	105	1,411	633	02-Apr-17	Conflict	During 2017
Bale	Rayitu	Female	105	261	235	470	131	1,202				
Bale	Rayitu	Male	138	310	241	896	138	1,723	696	09-Apr-17	Conflict	During 2017
Bale	Rayitu	Female	207	207	310	930	69	1,723				
Bale	Rayitu	Male	94	140	16	405	47	702	260	06-Sep-17	Conflict	During 2017
Bale	Rayitu	Female	125	172	78	421	62	858				
Bale	Seweyna	Male	222	253	159	729	158	1,521	545	08-Oct-17	Conflict	During 2017
Bale	Seweyna	Female	253	349	159	761	127	1,649				
Bale	Seweyna	Male	132	198	330	792	182	1,634	688	13-Oct-17	Conflict	During 2017
Bale	Seweyna	Female	132	297	198	859	182	1,668				
Bale	Seweyna	Male	219	281	188	719	125	1,532	539	15-Oct-17	Conflict	During 2017
Bale	Seweyna	Female	219	213	188	719	156	1,495				
Bale	Seweyna	Male	120	144	239	550	72	1,125	326	18-Oct-17	Conflict	During 2017
Bale	Seweyna	Female	167	167	144	646	144	1,268				
Bale	Seweyna	Male	322	322	257	709	129	1,739	489	18-Nov-17	Conflict	During 2017
Bale	Seweyna	Female	129	322	290	580	161	1,482				
Bale Total			16,705	18,353	19,188	58,373	10,473	123,092	18,316			
Borena	Arero	Male	530	884	498	1,100	223	3,235	821	06-Sep-17	Conflict	During 2017
Borena	Arero	Female	660	551	540	921	41	2,713				
Borena	Arero	Male	109	229	109	294	98	839	218	21-Sep-17	Conflict	During 2017
Borena	Arero	Female	87	196	153	262	33	731				
Borena	Arero	Male	388	596	544	829	233	2,590	518	03-Oct-17	Conflict	During 2017
Borena	Arero	Female	414	803	544	647	78	2,486				
Borena	Arero	Male	86	257	242	385	71	1,041	285	04-Oct-17	Conflict	During 2017
Borena	Arero	Female	43	156	256	328	14	797				
Borena	Dhaas	Male	326	145	54	217	217	959	362	01-Mar-17	Drought	During 2017
Borena	Dhaas	Female	489	362	127	362	127	1,467				
Borena	Dhaas	Male	743	523	138	1,073	523	3,000	1,100	06-Sep-17	Conflict	During 2017
Borena	Dhaas	Female	1,375	853	248	1,485	330	4,291				
Borena	Dhaas	Male	466	802	802	1,630	466	4,166	1,035	06-Nov-17	Conflict	During 2017
Borena	Dhaas	Female	440	1,139	725	1,553	181	4,038				
Borena	Dhaas	Male	108	158	122	216	58	662	114	29-Nov-17	Conflict	During 2017
Borena	Dhaas	Female	58	137	86	216	14	511				
Borena	Guchi	Male	386	325	223	629	122	1,685	406	06-Sep-17	Conflict	During 2017
Borena	Guchi	Female	325	365	325	548	61	1,624				



ANNEX I : INTERNAL DISPLACEMENTS IN OROMIA REGION AS OF FEBRUARY 2018

Zone	Woreda	Sex	Age Groups					Total	HHs	Site Open Date	Cause	Duration
			Infants (0-4 y)	Children (5-14 y)	Youth (15-17 y)	Adults (18-59 y)	Elderly (60 +y)					
Borena	Guchi	Male	3,371	3,448	1,193	3,753	495	12,260	3,286	08-Sep-17	Conflict	During 2017
Borena	Guchi	Female	2,695	3,917	1,449	3,360	591	12,012				
Borena	Guchi	Male	172	158	45	210	38	623	150	26-Dec-17	Conflict	During 2017
Borena	Guchi	Female	172	120	75	150	30	547				
Borena	Guchi	Male	502	770	435	1,172	101	2,980	670	29-Dec-17	Conflict	During 2017
Borena	Guchi	Female	469	670	369	1,039	168	2,715				
Borena	Moyale	Male	92	126	126	109	59	512	168	25-Nov-16	Other	Before 2017
Borena	Moyale	Female	134	218	193	151	34	730				
Borena	Moyale	Male	341	683	236	788	263	2,311	525	05-Jan-17	Other	During 2017
Borena	Moyale	Female	499	499	394	866	184	2,442				
Borena	Moyale	Male	2,432	2,346	2,141	3,352	753	11,024	3,121	07-Sep-17	Conflict	During 2017
Borena	Moyale	Female	2,957	2,392	2,787	3,410	664	12,210				
Borena	Wachile	Male	398	490	428	765	122	2,203	612	20-Jan-17	Conflict	During 2017
Borena	Wachile	Female	612	459	367	826	184	2,448				
Borena	Wachile	Male	483	483	544	695	91	2,296	604	14-Feb-17	Conflict	During 2017
Borena	Wachile	Female	634	664	272	453	91	2,114				
Borena	Wachile	Male	523	492	338	1,138	154	2,645	615	07-Sep-17	Conflict	During 2017
Borena	Wachile	Female	523	646	677	830	215	2,891				
Borena	Wachile	Male	499	905	374	811	312	2,901	624	22-Sep-17	Conflict	During 2017
Borena	Wachile	Female	468	998	250	780	62	2,558				
Borena	Wachile	Male	779	1,246	779	1,703	323	4,830	1,065	08-Dec-17	Conflict	During 2017
Borena	Wachile	Female	918	1,229	657	1,106	213	4,123				
Borena	Wachile	Male	280	437	280	455	157	1,609	350	09-Dec-17	Conflict	During 2017
Borena	Wachile	Female	175	473	140	402	-	1,190				
Borena	Wachile	Male	423	423	325	845	1,130	3,146	650	10-Dec-17	Conflict	During 2017
Borena	Wachile	Female	748	845	780	618	163	3,154				
Borena Total			28,332	33,618	21,390	42,482	9,487	135,309	17,299			
Bunno Bedele	Chwaka	Male	31	31	5	59	-	126	51	02-Sep-17	Conflict	During 2017
Bunno Bedele	Chwaka	Female	38	28	2	61	-	129				
Bunno Bedele	Dedesa	Male	188	313	104	355	21	981	495	04-May-17	Other	During 2017
Bunno Bedele	Dedesa	Female	250	292	125	397	42	1,106				
Bunno Bedele	Dedesa	Male	47	74	26	90	5	242	133	27-Jul-17	Other	During 2017
Bunno Bedele	Dedesa	Female	58	79	32	105	11	285				
Bunno Bedele	Mako	Male	507	1,009	223	806	68	2,613	613	10-Apr-17	Other	During 2017
Bunno Bedele	Mako	Female	653	838	172	538	103	2,304				
Bunno Bedele	Mako	Male	260	473	71	332	24	1,160	371	30-Apr-17	Other	During 2017
Bunno Bedele	Mako	Female	260	521	118	284	24	1,207				
Bunno Bedele Total			2,292	3,658	878	3,027	298	10,153	1,663			
East Harerge	Babile	Male	315	340	49	412	49	1,165	461	10-Oct-15	Conflict	Before 2017
East Harerge	Babile	Female	340	291	24	461	24	1,140				
East Harerge	Babile	Male	929	644	111	1,420	11	3,115	1,334	15-Sep-17	Conflict	During 2017
East Harerge	Babile	Female	1,052	885	102	1,513	4	3,556				
East Harerge	Babile	Male	22	17	2	41	-	82	35	16-Sep-17	Conflict	During 2017
East Harerge	Babile	Female	32	17	2	41	-	92				
East Harerge	Bedeno	Male	9	73	104	134	4	324	192	12-Sep-17	Conflict	During 2017
East Harerge	Bedeno	Female	7	67	107	138	3	322				
East Harerge	Bedeno	Male	6	103	121	170	4	404	204	13-Sep-17	Conflict	During 2017
East Harerge	Bedeno	Female	4	87	107	141	2	341				
East Harerge	Chinaksen	Male	130	122	24	138	49	463	200	10-Mar-17	Conflict	During 2017
East Harerge	Chinaksen	Female	138	187	33	155	24	537				
East Harerge	Chinaksen	Male	1,071	977	769	7,651	442	10,910	4,191	12-Sep-17	Conflict	During 2017
East Harerge	Chinaksen	Female	1,128	1,083	787	8,251	381	11,630				



International Organization for Migration (IOM)
The UN Migration Agency

ANNEX I : INTERNAL DISPLACEMENTS IN OROMIA REGION AS OF FEBRUARY 2018

Zone	Woreda	Sex	Age Groups					Total	HHs	Site Open Date	Cause	Duration
			Infants (0-4 y)	Children (5-14 y)	Youth (15-17 y)	Adults (18-59 y)	Elderly (60 +y)					
East Harerge	Chinaksen	Male	6	48	51	72	2	179				
East Harerge	Chinaksen	Female	4	45	45	66	4	164	65	19-Sep-17	Conflict	During 2017
East Harerge	Deder	Male	158	133	72	259	42	664	288	16-Sep-17	Conflict	During 2017
East Harerge	Deder	Female	196	124	146	278	32	776				
East Harerge	Deder	Male	1,812	1,484	1,576	3,140	404	8,416	3,470	18-Sep-17	Conflict	During 2017
East Harerge	Deder	Female	2,044	1,643	1,569	3,376	302	8,934				
East Harerge	Fedis	Male	1,945	1,454	395	2,528	211	6,533	2,586	16-Sep-17	Conflict	During 2017
East Harerge	Fedis	Female	1,962	1,630	210	2,593	-	6,395				
East Harerge	Fedis	Male	476	377	103	666	64	1,686	730	17-Sep-17	Conflict	During 2017
East Harerge	Fedis	Female	560	575	81	749	-	1,965				
East Harerge	Gar Muti	Male	13	17	10	27	3	70	30	13-Sep-17	Conflict	During 2017
East Harerge	Gar Muti	Female	16	21	12	31	-	80				
East Harerge	Gar Muti	Male	70	95	97	86	10	358	146	14-Sep-17	Conflict	During 2017
East Harerge	Gar Muti	Female	36	127	102	99	8	372				
East Harerge	Gar Muti	Male	29	49	49	48	6	181	74	15-Sep-17	Conflict	During 2017
East Harerge	Gar Muti	Female	40	57	38	50	4	189				
East Harerge	Gar Muti	Male	54	66	90	99	11	320	130	23-Sep-17	Conflict	During 2017
East Harerge	Gar Muti	Female	56	64	98	103	9	330				
East Harerge	Girawa	Male	18	18	7	93	15	151	60	11-Sep-17	Conflict	During 2017
East Harerge	Girawa	Female	17	16	6	103	7	149				
East Harerge	Girawa	Male	14	21	13	92	9	149	64	12-Sep-17	Conflict	During 2017
East Harerge	Girawa	Female	17	12	21	91	12	153				
East Harerge	Girawa	Male	23	21	39	189	27	299	112	14-Sep-17	Conflict	During 2017
East Harerge	Girawa	Female	29	29	37	97	32	224				
East Harerge	Girawa	Male	35	47	27	165	14	288	118	18-Sep-17	Conflict	During 2017
East Harerge	Girawa	Female	39	58	28	160	17	302				
East Harerge	Golo Oda	Male	14	11	3	44	-	72	34	16-Sep-17	Conflict	During 2017
East Harerge	Golo Oda	Female	33	19	-	47	-	99				
East Harerge	Goro Gutu	Male	617	504	449	911	79	2,560	1,053	15-Sep-17	Conflict	During 2017
East Harerge	Goro Gutu	Female	653	519	486	972	75	2,705				
East Harerge	Gursum	Male	100	98	16	186	9	409	173	11-Sep-17	Conflict	During 2017
East Harerge	Gursum	Female	145	93	23	188	4	453				
East Harerge	Gursum	Male	280	191	133	521	92	1,217	524	12-Sep-17	Conflict	During 2017
East Harerge	Gursum	Female	315	325	153	546	63	1,402				
East Harerge	Gursum	Male	158	89	33	253	42	575	253	13-Sep-17	Conflict	During 2017
East Harerge	Gursum	Female	184	174	33	276	23	690				
East Harerge	Gursum	Male	26	23	6	49	3	107	47	15-Sep-17	Conflict	During 2017
East Harerge	Gursum	Female	35	35	3	52	3	128				
East Harerge	Gursum	Male	264	210	47	428	42	991	410	16-Sep-17	Conflict	During 2017
East Harerge	Gursum	Female	301	253	48	438	22	1,062				
East Harerge	Gursum	Male	52	36	14	98	18	218	94	17-Sep-17	Conflict	During 2017
East Harerge	Gursum	Female	68	48	19	99	16	250				
East Harerge	Gursum	Male	28	25	7	45	4	109	46	18-Sep-17	Conflict	During 2017
East Harerge	Gursum	Female	35	31	5	49	2	122				
East Harerge	Gursum	Male	59	51	17	118	20	265	120	19-Sep-17	Conflict	During 2017
East Harerge	Gursum	Female	96	76	22	123	17	334				
East Harerge	Gursum	Male	136	127	29	235	26	553	222	20-Sep-17	Conflict	During 2017
East Harerge	Gursum	Female	178	114	16	244	7	559				
East Harerge	Gursum	Male	31	21	17	66	17	152	69	21-Sep-17	Conflict	During 2017
East Harerge	Gursum	Female	38	41	35	66	14	194				
East Harerge	Gursum	Male	50	34	28	106	34	252	112	22-Sep-17	Conflict	During 2017
East Harerge	Gursum	Female	56	56	50	101	39	302				



International Organization for Migration (IOM)
The UN Migration Agency

ANNEX I : INTERNAL DISPLACEMENTS IN OROMIA REGION AS OF FEBRUARY 2018

Zone	Woreda	Sex	Age Groups					Total	HHs	Site Open Date	Cause	Duration
			Infants (0-4 y)	Children (5-14 y)	Youth (15-17 y)	Adults (18-59 y)	Elderly (60 +y)					
East Harerge	Gursum	Male	31	11	6	48	-	96				
East Harerge	Gursum	Female	34	23	3	45	-	105	40	24-Sep-17	Conflict	During 2017
East Harerge	Harar Town	Male	341	427	489	881	82	2,220	906	14-Sep-17	Conflict	During 2017
East Harerge	Harar Town	Female	387	502	617	795	9	2,310				
East Harerge	Haro Maya	Male	24	38	67	53	11	193	79	14-Sep-17	Conflict	During 2017
East Harerge	Haro Maya	Female	32	45	51	62	12	202				
East Harerge	Haro Maya	Male	44	45	66	67	13	235	96	16-Sep-17	Conflict	During 2017
East Harerge	Haro Maya	Female	40	59	55	83	8	245				
East Harerge	Haro Maya	Male	11	18	39	48	9	125	51	18-Sep-17	Conflict	During 2017
East Harerge	Haro Maya	Female	13	21	44	47	5	130				
East Harerge	Jarso	Male	150	90	30	375	22	667	227	12-Sep-17	Conflict	During 2017
East Harerge	Jarso	Female	102	97	32	312	40	583				
East Harerge	Jarso	Male	500	675	670	1,350	166	3,361	1,127	14-Sep-17	Conflict	During 2017
East Harerge	Jarso	Female	612	676	681	1,350	170	3,489				
East Harerge	Kersa	Male	411	273	219	612	7	1,522	619	15-Sep-17	Conflict	During 2017
East Harerge	Kersa	Female	425	284	229	626	9	1,573				
East Harerge	Kombolcha	Male	2	12	16	39	-	69	32	12-Sep-17	Conflict	During 2017
East Harerge	Kombolcha	Female	5	9	18	59	-	91				
East Harerge	Kumbi	Male	1,311	1,066	164	1,721	410	4,672	2,213	03-Mar-15	Conflict	Before 2017
East Harerge	Kumbi	Female	1,803	2,213	410	1,721	246	6,393				
East Harerge	Kumbi	Male	5,890	4,768	1,536	7,148	1,236	20,578	8,169	15-Mar-15	Conflict	Before 2017
East Harerge	Kumbi	Female	5,648	6,587	855	6,628	550	20,268				
East Harerge	Kurfa Chele	Male	8	5	14	49	24	100	85	12-Sep-17	Conflict	During 2017
East Harerge	Kurfa Chele	Female	7	6	13	69	12	107				
East Harerge	Malka Balo	Male	195	149	132	264	24	764	308	16-Sep-17	Conflict	During 2017
East Harerge	Malka Balo	Female	203	150	136	273	14	776				
East Harerge	Malka Balo	Male	163	274	310	265	37	1,049	428	18-Sep-17	Conflict	During 2017
East Harerge	Malka Balo	Female	156	255	353	300	27	1,091				
East Harerge	Meta	Male	89	107	170	297	52	715	292	14-Sep-17	Conflict	During 2017
East Harerge	Meta	Female	106	138	142	313	46	745				
East Harerge	Meta	Male	213	282	167	440	25	1,127	454	16-Oct-17	Conflict	During 2017
East Harerge	Meta	Female	218	286	174	445	20	1,143				
East Harerge	Meta	Male	212	278	171	425	32	1,118	450	15-Dec-17	Conflict	During 2017
East Harerge	Meta	Female	216	284	167	429	36	1,132				
East Harerge	Meyu Muluke	Male	280	575	250	1,099	385	2,589	1,150	12-Sep-17	Conflict	During 2017
East Harerge	Meyu Muluke	Female	350	690	295	1,376	450	3,161				
East Harerge	Meyu Muluke	Male	1,143	1,402	640	9,868	863	13,916	5,757	17-Sep-17	Conflict	During 2017
East Harerge	Meyu Muluke	Female	1,144	1,460	647	10,706	912	14,869				
East Harerge	Midlega Tola	Male	119	127	34	170	42	492	190	15-Dec-09	Conflict	Before 2017
East Harerge	Midlega Tola	Female	144	102	25	170	17	458				
East Harerge	Midlega Tola	Male	534	392	107	713	107	1,853	798	08-Aug-16	Conflict	Before 2017
East Harerge	Midlega Tola	Female	570	641	143	713	71	2,138				
East Harerge	Midlega Tola	Male	175	146	29	205	22	577	235	14-Sep-17	Conflict	During 2017
East Harerge	Midlega Tola	Female	170	159	25	231	13	598				
East Harerge	Midlega Tola	Male	83	67	14	124	21	309	131	15-Sep-17	Conflict	During 2017
East Harerge	Midlega Tola	Female	97	90	14	131	14	346				
East Harerge	Midlega Tola	Male	87	69	13	114	5	288	118	16-Sep-17	Conflict	During 2017
East Harerge	Midlega Tola	Female	87	75	11	126	3	302				
East Harerge	Midlega Tola	Male	22	18	5	27	2	74	32	17-Sep-17	Conflict	During 2017
East Harerge	Midlega Tola	Female	23	27	2	34	-	86				
East Harerge	Midlega Tola	Male	51	35	12	62	-	160	70	19-Sep-17	Conflict	During 2017
East Harerge	Midlega Tola	Female	54	54	12	70	-	190				



International Organization for Migration (IOM)
The UN Migration Agency

ANNEX I : INTERNAL DISPLACEMENTS IN OROMIA REGION AS OF FEBRUARY 2018

Zone	Woreda	Sex	Age Groups					Total	HHs	Site Open Date	Cause	Duration
			Infants (0-4 y)	Children (5-14 y)	Youth (15-17 y)	Adults (18-59 y)	Elderly (60 +y)					
East Harerge Total			43,539	42,610	19,480	95,765	9,194	210,588	41,704			
East Shewa	Adama	Male	93	93	93	170	8	457	170	19-Sep-17	Conflict	During 2017
East Shewa	Adama	Female	69	85	69	170	-	393				
East Shewa	Adama	Male	37	31	40	28	15	151	126	24-Sep-17	Conflict	During 2017
East Shewa	Adama	Female	34	34	34	34	24	160				
East Shewa	Fentale	Male	71	66	71	107	5	320	119	06-May-14	Seasonal Flood	Before 2017
East Shewa	Fentale	Female	48	66	48	103	-	265				
East Shewa Total			352	375	355	612	52	1,746	415			
East Wellega	Diga	Male	354	265	118	339	44	1,120	455	17-Jan-10	Drought	Before 2017
East Wellega	Diga	Female	177	265	88	339	59	928				
East Wellega	Diga	Male	286	437	84	336	-	1,143	474	17-Oct-10	Drought	Before 2017
East Wellega	Diga	Female	353	336	101	336	-	1,126				
East Wellega	Sasiga	Male	232	649	93	394	46	1,414	391	11-Mar-95	Drought	Before 2017
East Wellega	Sasiga	Female	232	302	-	371	-	905				
East Wellega	Sasiga	Male	90	129	65	323	26	633	230	10-Jan-01	Drought	Before 2017
East Wellega	Sasiga	Female	142	220	26	271	13	672				
East Wellega	Sasiga	Male	90	129	65	323	26	633	938	12-Oct-02	Drought	Before 2017
East Wellega	Sasiga	Female	142	220	26	271	13	672				
East Wellega	Sasiga	Male	519	950	346	691	86	2,592	883	13-Mar-03	Drought	Before 2017
East Wellega	Sasiga	Female	302	519	216	648	43	1,728				
East Wellega	Sasiga	Male	234	332	156	352	20	1,094	380	29-Mar-03	Drought	Before 2017
East Wellega	Sasiga	Female	195	176	117	352	20	860				
East Wellega	Sasiga	Male	187	231	72	303	14	807	236	11-Jan-10	Drought	Before 2017
East Wellega	Sasiga	Female	115	260	29	216	14	634				
East Wellega	Sasiga	Male	211	358	63	358	21	1,011	355	22-Feb-10	Drought	Before 2017
East Wellega	Sasiga	Female	295	316	42	400	21	1,074				
East Wellega	Sasiga	Male	539	346	192	693	77	1,847	906	30-Oct-13	Drought	Before 2017
East Wellega	Sasiga	Female	539	539	77	693	192	2,040				
East Wellega Total			5,234	6,979	1,976	8,009	735	22,933	5,248			
Guji	Aga Wayu	Male	100	120	90	120	40	470	100	05-Dec-16	Other	Before 2017
Guji	Aga Wayu	Female	80	160	80	80	20	420				
Guji	Aga Wayu	Male	85	80	80	90	80	415	100	10-Sep-17	Other	During 2017
Guji	Aga Wayu	Female	85	95	80	75	65	400				
Guji	Aga Wayu	Male	32	34	44	32	26	168	40	12-Sep-17	Other	During 2017
Guji	Aga Wayu	Female	36	36	32	38	20	162				
Guji	Aga Wayu	Male	134	200	124	160	79	697	160	15-Sep-17	Other	During 2017
Guji	Aga Wayu	Female	125	202	144	162	66	699				
Guji	Girja (Harenfema)	Male	32	48	64	64	8	216	80	10-Nov-16	Other	Before 2017
Guji	Girja (Harenfema)	Female	24	48	72	40	12	196				
Guji	Goro Dola	Male	9	18	31	22	7	87	44	01-Nov-17	Conflict	During 2017
Guji	Goro Dola	Female	9	22	22	18	9	80				
Guji	Gumi-Eldelo	Male	240	320	340	360	200	1,460	400	10-Nov-16	Conflict	Before 2017
Guji	Gumi-Eldelo	Female	240	360	400	320	180	1,500				
Guji	Gumi-Eldelo	Male	520	715	228	488	163	2,114	650	10-Jan-17	Conflict	During 2017
Guji	Gumi-Eldelo	Female	845	1,105	325	715	33	3,023				
Guji	Gumi-Eldelo	Male	450	154	150	400	75	1,229	500	15-Jan-17	Conflict	During 2017
Guji	Gumi-Eldelo	Female	625	825	300	450	75	2,275				
Guji	Gumi-Eldelo	Male	315	473	428	315	135	1,666	450	05-Feb-17	Conflict	During 2017
Guji	Gumi-Eldelo	Female	293	810	248	428	45	1,824				
Guji	Gumi-Eldelo	Male	396	652	744	788	396	2,976				
Guji	Gumi-Eldelo	Female	424	684	700	564	228	2,600	760	10-Apr-17	Conflict	During 2017
Guji	Gumi-Eldelo	Male	450	630	510	510	120	2,220	600	12-Sep-17	Conflict	During 2017



ANNEX I : INTERNAL DISPLACEMENTS IN OROMIA REGION AS OF FEBRUARY 2018

Zone	Woreda	Sex	Age Groups					Total	HHs	Site Open Date	Cause	Duration
			Infants (0-4 y)	Children (5-14 y)	Youth (15-17 y)	Adults (18-59 y)	Elderly (60 +y)					
Guji	Gumi-Eldelo	Female	480	960	540	540	120	2,640				
Guji	Gumi-Eldelo	Male	150	270	120	150	50	740	200	15-Sep-17	Conflict	During 2017
Guji	Gumi-Eldelo	Female	210	320	120	190	50	890				
Guji	Gumi-Eldelo	Male	300	420	660	450	300	2,130	600	15-Oct-17	Conflict	During 2017
Guji	Gumi-Eldelo	Female	240	480	540	420	180	1,860				
Guji	Gumi-Eldelo	Male	257	351	445	470	282	1,805	470	15-Nov-17	Conflict	During 2017
Guji	Gumi-Eldelo	Female	260	354	448	379	166	1,607				
Guji	Liben	Male	1,260	1,938	998	1,076	572	5,844	1,260	13-Jan-17	Conflict	During 2017
Guji	Liben	Female	848	1,570	824	1,008	378	4,628				
Guji	Liben	Male	338	495	315	360	90	1,598	450	11-Apr-17	Conflict	During 2017
Guji	Liben	Female	338	608	270	473	68	1,757				
Guji	Liben	Male	234	416	273	182	52	1,157	260	13-Apr-17	Conflict	During 2017
Guji	Liben	Female	208	546	195	260	13	1,222				
Guji	Liben	Male	613	588	653	599	214	2,667				
Guji	Liben	Female	417	980	453	527	111	2,488	570	15-Sep-17	Conflict	During 2017
Guji	Liben	Male	108	90	135	81	90	504	180	25-Oct-17	Conflict	During 2017
Guji	Liben	Female	99	126	135	108	54	522				
Guji	Liben	Male	62	91	57	39	10	259	52	28-Oct-17	Conflict	During 2017
Guji	Liben	Female	49	109	29	52	-	239				
Guji	Negele City Administration	Male	150	225	225	250	150	1,000				
Guji	Negele City Administration	Female	150	250	275	175	100	950	250	05-Oct-17	Conflict	During 2017
Guji	Odo Shakiso	Male	44	52	81	59	15	251	74	15-Dec-17	Conflict	During 2017
Guji	Odo Shakiso	Female	37	74	59	37	22	229				
Guji	Saba Boru	Male	105	225	135	113	30	608	150	15-Jul-17	Other	During 2017
Guji	Saba Boru	Female	105	330	75	150	30	690				
Guji	Saba Boru	Male	32	58	44	34	6	174	40	10-Sep-17	Other	During 2017
Guji	Saba Boru	Female	30	60	22	38	6	156				
Guji	Saba Boru	Male	45	68	33	38	10	194	50	15-Sep-17	Other	During 2017
Guji	Saba Boru	Female	43	95	40	50	10	238				
Guji Total			12,761	19,940	13,435	14,547	5,261	65,944	8,490			
Jimma	Botor Tollay	Male	243	448	165	467	59	1,382	672	01-May-06	Drought	Before 2017
Jimma	Botor Tollay	Female	332	480	192	529	54	1,587				
Jimma	Botor Tollay	Male	72	165	51	154	10	452	209	02-May-06	Drought	Before 2017
Jimma	Botor Tollay	Female	124	175	72	175	31	577				
Jimma	Botor Tollay	Male	103	163	60	181	20	527	286	03-May-06	Drought	Before 2017
Jimma	Botor Tollay	Female	117	200	92	186	23	618				
Jimma	Kersa	Male	15	17	5	25	1	63	23	26-Mar-99	Other	Before 2017
Jimma	Kersa	Female	12	20	9	26	1	68				
Jimma	Kersa	Male	28	50	13	54	6	151	49	03-Feb-00	Other	Before 2017
Jimma	Kersa	Female	32	54	19	57	3	165				
Jimma	Kersa	Male	55	97	36	97	12	297	102	19-Feb-00	Other	Before 2017
Jimma	Kersa	Female	61	97	30	116	7	311				
Jimma	Kersa	Male	96	123	53	140	17	429	154	28-Feb-00	Other	Before 2017
Jimma	Kersa	Female	96	132	53	158	9	448				
Jimma	Kersa	Male	50	113	25	101	13	302				
Jimma	Kersa	Female	51	113	38	120	6	328	103	31-Mar-00	Other	Before 2017
Jimma	Kersa	Male	68	127	43	136	17	391	158	22-Apr-00	Other	Before 2017
Jimma	Kersa	Female	93	136	51	162	17	459				
Jimma	Kersa	Male	49	76	33	87	11	256	100	05-May-00	Other	Before 2017
Jimma	Kersa	Female	65	76	33	98	16	288				
Jimma	Seka Chekorsa	Male	7	9	-	19	1	36	21	18-Aug-16	Landslide	Before 2017
Jimma	Seka Chekorsa	Female	9	11	7	19	1	47				



ANNEX I : INTERNAL DISPLACEMENTS IN OROMIA REGION AS OF FEBRUARY 2018

Zone	Woreda	Sex	Age Groups					Total	HHs	Site Open Date	Cause	Duration
			Infants (0-4 y)	Children (5-14 y)	Youth (15-17 y)	Adults (18-59 y)	Elderly (60 +y)					
Jimma	Shebe Sambo	Male	21	38	12	40	2	113	25	27-Jul-16	Landslide	Before 2017
Jimma	Shebe Sambo	Female	30	31	16	42	2	121				
Jimma Total			1,829	2,951	1,108	3,189	339	9,416	1,902			
Kelem Wellega	Anfilo	Male	1,661	1,983	1,045	1,288	382	6,359	1,714	08-May-14	Drought	Before 2017
Kelem Wellega	Anfilo	Female	1,563	1,799	663	1,693	121	5,839				
Kelem Wellega	Anfilo	Male	667	820	513	769	102	2,871	733	20-May-14	Drought	Before 2017
Kelem Wellega	Anfilo	Female	667	615	205	769	-	2,256				
Kelem Wellega	Dale Sadi	Male	3	-	-	18	-	21	21	30-Sep-17	Conflict	During 2017
Kelem Wellega	Dale Sadi	Female	-	1	-	5	-	6				
Kelem Wellega Total			4,561	5,218	2,426	4,542	605	17,352	2,468			
North Shewa (R4)	Kuyu	Male	6	5	6	5	2	24	33	27-Sep-17	Conflict	During 2017
North Shewa (R4)	Kuyu	Female	6	6	6	6	4	28				
North Shewa (R4) Total			12	11	12	11	6	52	33			
South West Shewa	Waliso	Male	12	11	13	11	5	52	32	17-Sep-17	Conflict	During 2017
South West Shewa	Waliso	Female	11	13	13	11	9	57				
South West Shewa	Wenchi	Male	9	7	12	6	3	37	37	09-Sep-17	Conflict	During 2017
South West Shewa	Wenchi	Female	8	8	12	7	5	40				
South West Shewa Total			40	39	50	35	22	186	69			
West Arsi	Adaba	Male	19	25	10	27	5	86	34	16-Aug-17	Flash Flood	During 2017
West Arsi	Adaba	Female	20	26	11	24	3	84				
West Arsi	Adaba	Male	24	22	10	91	-	147	91	21-Sep-17	Conflict	During 2017
West Arsi	Adaba	Female	28	15	2	56	-	101				
West Arsi	Dodola	Male	15	28	16	47	-	106	46	12-Sep-17	Conflict	During 2017
West Arsi	Dodola	Female	17	29	15	53	-	114				
West Arsi	Gedeb Asasa	Male	17	34	18	42	10	121	53	03-Jul-16	Conflict	Before 2017
West Arsi	Gedeb Asasa	Female	21	36	19	56	12	144				
West Arsi	Gedeb Asasa	Male	27	38	20	56	1	142	56	17-Sep-17	Conflict	During 2017
West Arsi	Gedeb Asasa	Female	26	40	19	53	-	138				
West Arsi	Kofele	Male	17	62	23	50	10	162	68	18-Sep-17	Conflict	During 2017
West Arsi	Kofele	Female	19	68	23	48	20	178				
West Arsi	Kore	Male	5	15	3	36	-	59	33	22-Sep-17	Conflict	During 2017
West Arsi	Kore	Female	6	7	5	26	-	44				
West Arsi	Shalla	Male	31	36	15	45	10	137	57	03-Aug-16	Seasonal Flood	Before 2017
West Arsi	Shalla	Female	28	45	21	41	13	148				
West Arsi	Shalla	Male	25	33	13	31	18	120	47	15-May-17	Seasonal Flood	During 2017
West Arsi	Shalla	Female	24	36	15	29	11	115				
West Arsi	Shalla	Male	26	31	14	40	17	128	52	03-Jul-17	Seasonal Flood	During 2017
West Arsi	Shalla	Female	24	32	17	38	21	132				
West Arsi	Shalla	Male	28	39	22	50	24	163	65	09-Jul-17	Flash Flood	During 2017
West Arsi	Shalla	Female	28	38	21	51	19	157				
West Arsi	Shalla	Male	8	8	8	20	6	50	20	25-Jul-17	Flash Flood	During 2017
West Arsi	Shalla	Female	6	12	9	18	5	50				
West Arsi	Shalla	Male	6	4	3	20	-	33	26	22-Nov-17	Conflict	During 2017
West Arsi	Shalla	Female	4	6	5	6	-	21				
West Arsi	Shashemene Town	Male	27	38	20	56	1	142	57	18-Sep-17	Conflict	During 2017
West Arsi	Shashemene Town	Female	26	40	24	53	-	143				
West Arsi	Shashemene Zuria	Male	17	44	5	35	19	120	48	09-Nov-17	Conflict	During 2017
West Arsi	Shashemene Zuria	Female	15	53	15	27	10	120				
West Arsi	Siraro	Male	88	122	48	167	22	447	176	15-Mar-16	Conflict	Before 2017
West Arsi	Siraro	Female	80	90	68	173	22	433				
West Arsi Total			752	1,152	537	1,565	279	4,285	929			
West Guji	Abaya	Male	606	1,135	151	833	76	2,801	757	13-Dec-16	Drought	Before 2017



International Organization for Migration (IOM)
The UN Migration Agency

ANNEX I : INTERNAL DISPLACEMENTS IN OROMIA REGION AS OF FEBRUARY 2018

Zone	Woreda	Sex	Age Groups					Total	HHs	Site Open Date	Cause	Duration
			Infants (0-4 y)	Children (5-14 y)	Youth (15-17 y)	Adults (18-59 y)	Elderly (60 +y)					
West Guji	Abaya	Female	530	1,173	189	1,060	76	3,028				
West Guji	Abaya	Male	195	325	91	312	26	949	260	21-Jan-17	Drought	During 2017
West Guji	Abaya	Female	156	390	117	364	52	1,079				
West Guji	Dugeda Dawa	Male	50	90	25	70	8	243	56	22-Dec-17	Drought	During 2017
West Guji	Dugeda Dawa	Female	31	98	22	90	6	247				
West Guji	Galana	Male	487	1,235	260	910	65	2,957	650	13-Sep-16	Drought	Before 2017
West Guji	Galana	Female	358	1,170	325	1,040	65	2,958				
West Guji	Galana	Male	748	1,203	845	1,268	32	4,096	1,300	11-Nov-16	Drought	Before 2017
West Guji	Galana	Female	617	1,658	877	1,137	195	4,484				
West Guji	Galana	Male	288	1,104	432	864	144	2,832	480	07-Dec-16	Drought	Before 2017
West Guji	Galana	Female	432	1,200	408	768	48	2,856				
West Guji	Galana	Male	1,127	2,042	441	1,720	135	5,465	1,346	06-Jun-17	Conflict	During 2017
West Guji	Galana	Female	606	2,042	723	1,703	105	5,179				
West Guji	Galana	Male	1,360	2,640	760	2,120	120	7,000	1,600	14-Jun-17	Conflict	During 2017
West Guji	Galana	Female	1,080	3,120	520	2,240	240	7,200				
West Guji	Galana	Male	175	250	100	287	13	825	250	17-Jul-17	Drought	During 2017
West Guji	Galana	Female	263	375	162	325	25	1,150				
West Guji	Galana	Male	272	688	112	432	32	1,536	320	24-Jul-17	Conflict	During 2017
West Guji	Galana	Female	160	640	304	560	64	1,728				
West Guji	Galana	Male	372	692	128	638	39	1,869	512	28-Aug-17	Conflict	During 2017
West Guji	Galana	Female	308	707	127	602	25	1,769				
West Guji	Melka Soda	Male	145	274	48	338	16	821	322	23-Oct-16	Drought	Before 2017
West Guji	Melka Soda	Female	113	483	145	419	64	1,224				
West Guji	Melka Soda	Male	185	451	123	492	20	1,271	410	03-Nov-16	Drought	Before 2017
West Guji	Melka Soda	Female	246	595	184	492	61	1,578				
West Guji	Melka Soda	Male	339	731	235	626	26	1,957	522	05-Nov-16	Drought	Before 2017
West Guji	Melka Soda	Female	235	627	131	626	78	1,697				
West Guji	Melka Soda	Male	330	510	150	720	60	1,770	600	15-Nov-16	Drought	Before 2017
West Guji	Melka Soda	Female	450	750	330	810	150	2,490				
West Guji	Melka Soda	Male	77	181	26	198	9	491	172	22-Apr-17	Drought	During 2017
West Guji	Melka Soda	Female	34	198	77	249	34	592				
West Guji	Suro Barguda	Male	48	99	18	78	-	243	60	11-Mar-17	Conflict	During 2017
West Guji	Suro Barguda	Female	33	108	30	84	6	261				
West Guji	Suro Barguda	Male	162	388	112	350	38	1,050	250	24-Jul-17	Conflict	During 2017
West Guji	Suro Barguda	Female	162	400	162	363	25	1,112				
West Guji	Suro Barguda	Male	501	959	262	676	44	2,442	436	13-Sep-17	Conflict	During 2017
West Guji	Suro Barguda	Female	283	785	283	959	65	2,375				
West Guji	Suro Barguda	Male	311	589	165	488	26	1,579	340	18-Sep-17	Conflict	During 2017
West Guji	Suro Barguda	Female	188	677	321	652	71	1,909				
West Guji	Suro Barguda	Male	137	382	151	223	14	907	144	13-Oct-17	Conflict	During 2017
West Guji	Suro Barguda	Female	43	238	72	259	7	619				
West Guji	Suro Barguda	Male	210	514	168	368	21	1,281	210	19-Dec-17	Conflict	During 2017
West Guji	Suro Barguda	Female	126	472	210	420	74	1,302				
West Guji Total			14,579	34,388	10,522	29,233	2,500	91,222	10,997			
West Harerge	Bordode	Male	127	104	139	185	13	568	250	27-Feb-17	Conflict	During 2017
West Harerge	Bordode	Female	162	150	127	219	24	682				
West Harerge	Bordode	Male	191	176	117	264	15	763	320	09-Mar-17	Conflict	During 2017
West Harerge	Bordode	Female	162	191	176	279	29	837				
West Harerge	Bordode	Male	267	325	201	438	56	1,287	526	14-Mar-17	Conflict	During 2017
West Harerge	Bordode	Female	257	304	211	490	81	1,343				
West Harerge	Bordode	Male	86	149	168	61	21	485	198	24-Mar-17	Conflict	During 2017
West Harerge	Bordode	Female	82	151	172	89	11	505				



International Organization for Migration (IOM)
The UN Migration Agency

ANNEX I : INTERNAL DISPLACEMENTS IN OROMIA REGION AS OF FEBRUARY 2018

Zone	Woreda	Sex	Age Groups					Total	HHs	Site Open Date	Cause	Duration
			Infants (0-4 y)	Children (5-14 y)	Youth (15-17 y)	Adults (18-59 y)	Elderly (60 +y)					
West Harerge	Bordode	Male	128	167	129	231	26	681	270	26-Mar-17	Conflict	During 2017
West Harerge	Bordode	Female	116	180	129	231	13	669				
West Harerge	Bordode	Male	240	234	317	425	41	1,257	511	27-Mar-17	Conflict	During 2017
West Harerge	Bordode	Female	272	257	282	415	72	1,298				
West Harerge	Bordode	Male	96	189	217	121	26	649	265	28-Mar-17	Conflict	During 2017
West Harerge	Bordode	Female	112	203	208	136	17	676				
West Harerge	Bordode	Male	120	147	55	166	18	506	210	01-Sep-17	Conflict	During 2017
West Harerge	Bordode	Female	101	157	92	166	28	544				
West Harerge	Bordode	Male	130	143	104	221	39	637	265	16-Sep-17	Conflict	During 2017
West Harerge	Bordode	Female	143	155	117	234	39	688				
West Harerge	Chiro Zuria	Male	271	233	386	692	42	1,624	726	09-Sep-17	Conflict	During 2017
West Harerge	Chiro Zuria	Female	424	462	348	692	80	2,006				
West Harerge	Daro Lebu	Male	182	143	156	208	13	702	260	16-Sep-17	Conflict	During 2017
West Harerge	Daro Lebu	Female	130	117	104	234	13	598				
West Harerge	Daro Lebu	Male	73	86	120	126	7	412	178	12-Nov-17	Conflict	During 2017
West Harerge	Daro Lebu	Female	86	133	120	126	13	478				
West Harerge	Daro Lebu	Male	182	192	173	282	54	883	367	13-Nov-17	Conflict	During 2017
West Harerge	Daro Lebu	Female	183	253	186	279	57	958				
West Harerge	Daro Lebu	Male	160	125	214	339	36	874	360	16-Nov-17	Conflict	During 2017
West Harerge	Daro Lebu	Female	214	160	196	303	53	926				
West Harerge	Daro Lebu	Male	155	211	141	240	25	772	310	17-Nov-17	Conflict	During 2017
West Harerge	Daro Lebu	Female	169	183	127	254	42	775				
West Harerge	Doba	Male	129	116	129	192	26	592	252	15-Sep-17	Conflict	During 2017
West Harerge	Doba	Female	103	154	154	231	26	668				
West Harerge	Doba	Male	189	237	189	378	24	1,017	416	16-Sep-17	Conflict	During 2017
West Harerge	Doba	Female	142	212	237	426	48	1,065				
West Harerge	Habro	Male	37	30	34	67	4	172	70	14-Nov-17	Conflict	During 2017
West Harerge	Habro	Female	41	37	26	63	11	178				
West Harerge	Hawi Gudina	Male	2,240	3,183	1,981	3,630	528	11,562	4,626	03-Dec-17	Conflict	During 2017
West Harerge	Hawi Gudina	Female	1,582	3,578	2,188	3,623	597	11,568				
West Harerge	Mesela	Male	367	330	258	548	40	1,543	646	15-Sep-17	Conflict	During 2017
West Harerge	Mesela	Female	330	294	294	693	76	1,687				
West Harerge	Mieso	Male	130	163	195	292	16	796	328	04-Mar-17	Conflict	During 2017
West Harerge	Mieso	Female	146	146	227	276	49	844				
West Harerge	Mieso	Male	64	76	71	114	12	337	135	05-Mar-17	Conflict	During 2017
West Harerge	Mieso	Female	58	77	70	120	13	338				
West Harerge	Mieso	Male	327	300	300	490	27	1,444	594	07-Mar-17	Conflict	During 2017
West Harerge	Mieso	Female	354	354	218	518	82	1,526				
West Harerge	Mieso	Male	356	331	254	432	25	1,398	544	21-Mar-17	Conflict	During 2017
West Harerge	Mieso	Female	280	254	254	483	51	1,322				
West Harerge	Mieso	Male	119	131	143	203	12	608	255	24-Mar-17	Conflict	During 2017
West Harerge	Mieso	Female	107	155	167	215	23	667				
West Harerge	Mieso	Male	241	321	293	506	26	1,387	560	26-Mar-17	Conflict	During 2017
West Harerge	Mieso	Female	321	293	240	506	53	1,413				
West Harerge	Mieso	Male	79	58	87	137	14	375	150	11-Sep-17	Conflict	During 2017
West Harerge	Mieso	Female	65	86	72	130	22	375				
West Harerge	Mieso	Male	338	276	276	583	61	1,534	620	15-Sep-17	Conflict	During 2017
West Harerge	Mieso	Female	338	368	246	552	62	1,566				
West Harerge	Mieso	Male	421	385	350	596	36	1,788	750	18-Sep-17	Conflict	During 2017
West Harerge	Mieso	Female	385	491	385	631	70	1,962				
West Harerge	Mieso	Male	186	202	139	295	30	852	350	26-Sep-17	Conflict	During 2017
West Harerge	Mieso	Female	186	186	186	295	45	898				



International Organization for Migration (IOM)
The UN Migration Agency

ANNEX I : INTERNAL DISPLACEMENTS IN OROMIA REGION AS OF FEBRUARY 2018

Zone	Woreda	Sex	Age Groups					Total	HHs	Site Open Date	Cause	Duration
			Infants (0-4 y)	Children (5-14 y)	Youth (15-17 y)	Adults (18-59 y)	Elderly (60 +y)					
West Harerge	Tulo	Male	210	330	300	420	30	1,290	594	09-Sep-17	Conflict	During 2017
West Harerge	Tulo	Female	330	420	300	540	60	1,650				
West Harerge Total			15,222	19,254	15,495	26,331	3,203	79,505	15,906			
West Shewa	Ambo Zuria	Male	13	10	14	10	5	52	66	12-Sep-17	Conflict	During 2017
West Shewa	Ambo Zuria	Female	13	13	13	13	9	61				
West Shewa	Dendi	Male	8	6	8	6	3	31	39	24-Sep-17	Conflict	During 2017
West Shewa	Dendi	Female	7	8	7	6	5	33				
West Shewa	Jeldu	Male	14	13	16	13	5	61	81	18-Sep-17	Conflict	During 2017
West Shewa	Jeldu	Female	13	15	15	14	10	67				
West Shewa	Jeldu	Male	13	12	15	10	6	56	23	24-Oct-17	Landslide	During 2017
West Shewa	Jeldu	Female	13	13	13	11	9	59				
West Shewa Total			94	90	101	83	52	420	209			
Grand Total			147,394	190,010	107,556	290,002	42,703	777,665	126,920			

Disclaimer: Age and gender disaggregation for the site is extrapolated using a demographic calculator tool based on the age range and sex of the household members of 20 randomly selected households from the site.

Displacement Tracking Matrix (DTM) conducted in collaboration with Danish Refugee Council (DRC)



Humanitarian Aid
and Civil Protection



Schweizerische Eidgenossenschaft
Confédération suisse
Confederazione Svizzera
Confederaziun Svizra

Swiss Agency for Development
and Cooperation SDC



USAID
FROM THE AMERICAN PEOPLE

DTM made possible thanks to the European Civil Protection and Humanitarian Aid Operations (ECHO), the Ethiopian Humanitarian Fund (EHF), the Office of United States Foreign Disaster Assistance (OFDA) and the Swiss agency for Development and Cooperation (SDC).

The opinions expressed in this report are those of the authors and do not necessarily reflect the views of the Office of United States Foreign Disaster Assistance.