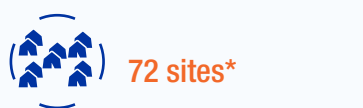
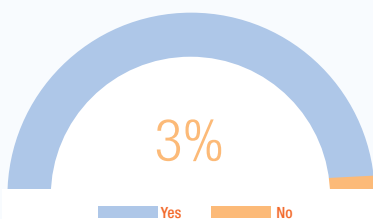


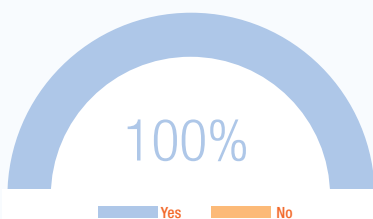
Key DTM figures in the sites



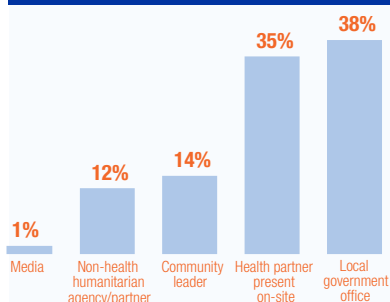
No actions taken on COVID-19 prevention and control in 3% (down from 10%) of the sites



Reportedly, people living in all the sites have been informed of the COVID-19 precaution measures



Source of information on COVID-19 in the 97% (up from 96%) of sites with preventive controls

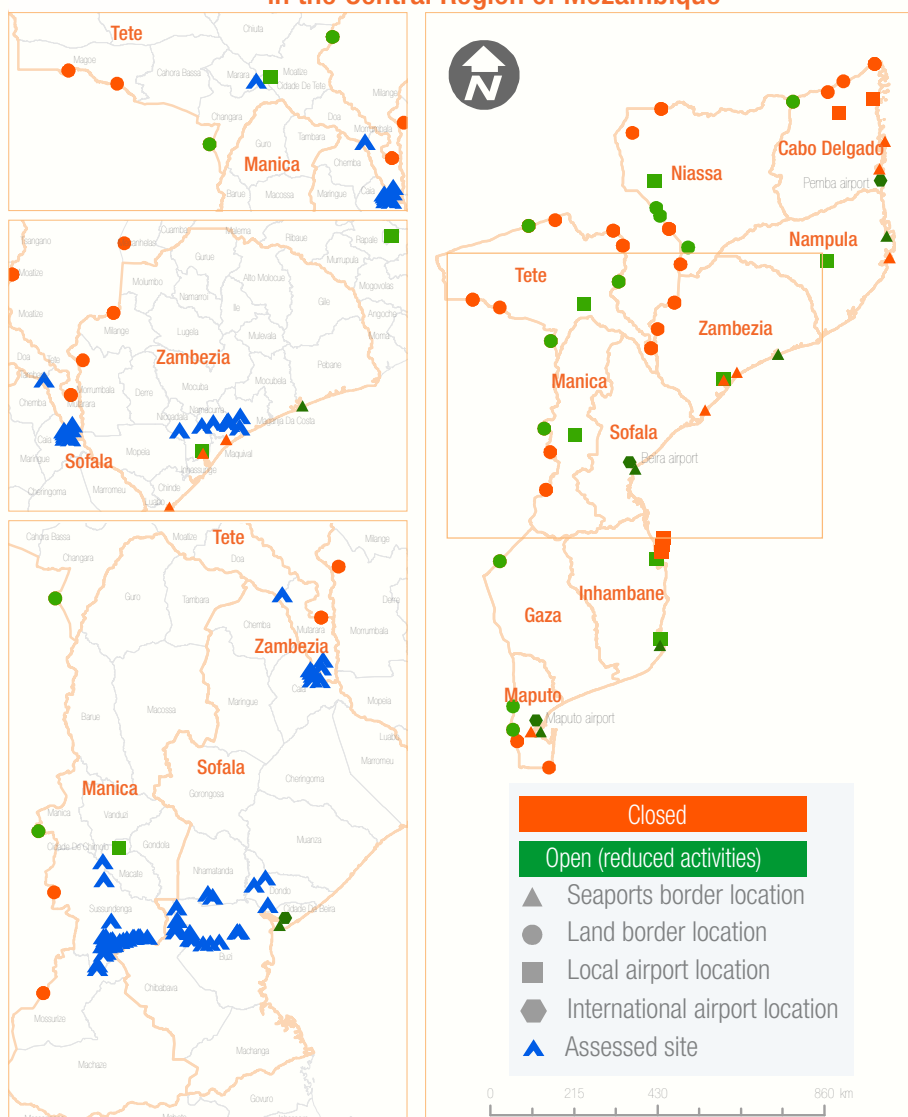


The current outbreak of COVID-19 has resulted in a global pandemic, heightening the risk to vulnerable populations, internally displaced people and people on the move. On 22 March 2020, the Government of Mozambique officially declared the first positive COVID-19 case. Concern about the potential spread of COVID-19 in Mozambique was elevated in late March, when according to Mozambique's National Migration Service (SENAMI) over 14,000 Mozambican migrants returned from South Africa over the Ressano Garcia border within a span of a few days, as South Africa declared lock-down due to COVID-19, further heightening the risk to vulnerable populations especially the internally displaced population.

In response to this pandemic, IOM's Displacement Tracking Matrix (DTM) in collaboration with the Government of Mozambique's National Disaster Management Agency (INGC) conducted an assessment in the resettlement sites from 19 to 23 May 2020, with the sole purpose to inform the government and humanitarian partners on the preparedness and precautionary measures that are available in resettlement sites hosting displaced populations since Cyclone Idai. The information gathered will help decision-makers to plan interventions and to recommend health and site preparations measures for outbreak prevention and containment in the resettlement sites in the central region.

In the 72 resettlement sites assessed, nine sites (Bandua 2019, Begaja, Chingemidji, Inhajou 2019 and Maximedje sites in Buzi district of Sofala province and Chibue, Macocoe, Mucombe and Ngurue sites in Sussudenga district of Manica province) reported that in the past month, 39 migrant workers from South Africa and Zimbabwe settled in the sites. Ninety per cent of the sites reported a noticeable change in people's behaviours and habits to better prevent COVID-19.

Point of Entries Status and Resettlement Sites in the Central Region of Mozambique

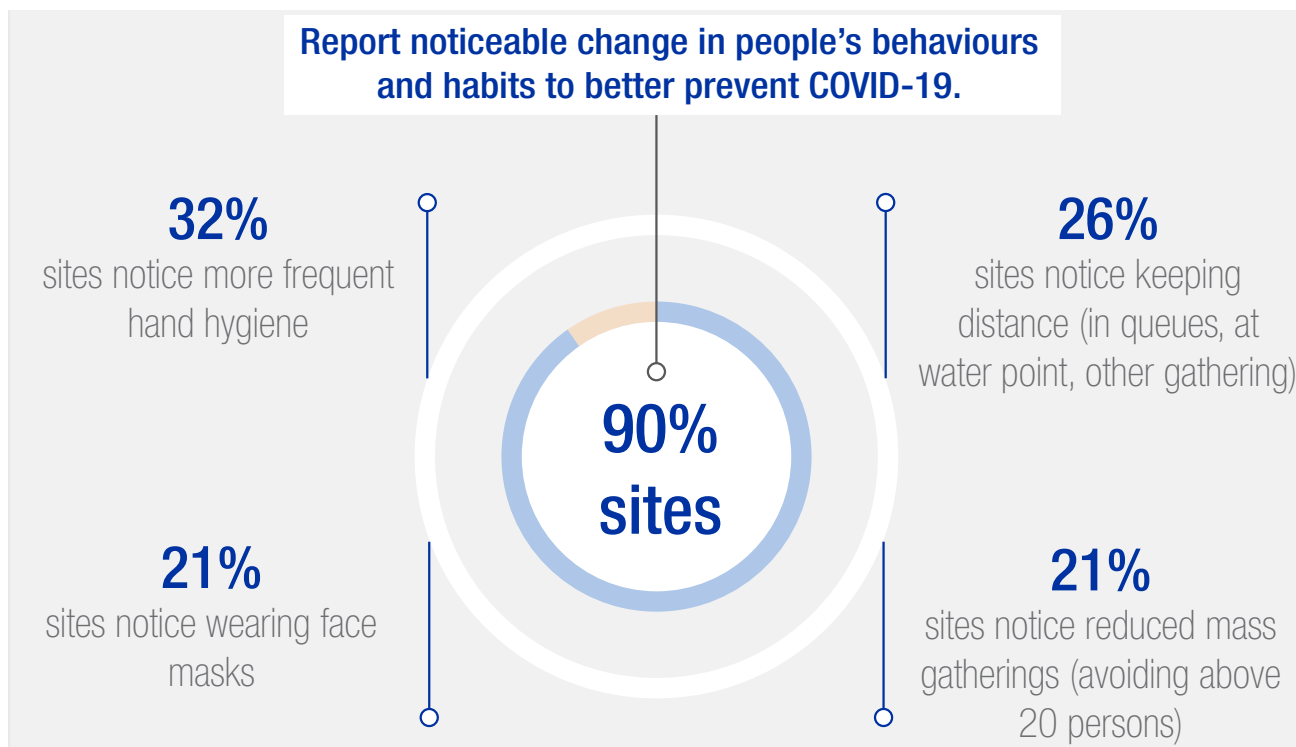


*Grudja (4 de Outubro/Nhabziconja) site in Buzi was split into two by INGC increasing the number of resettlement sites in the central region to 72.

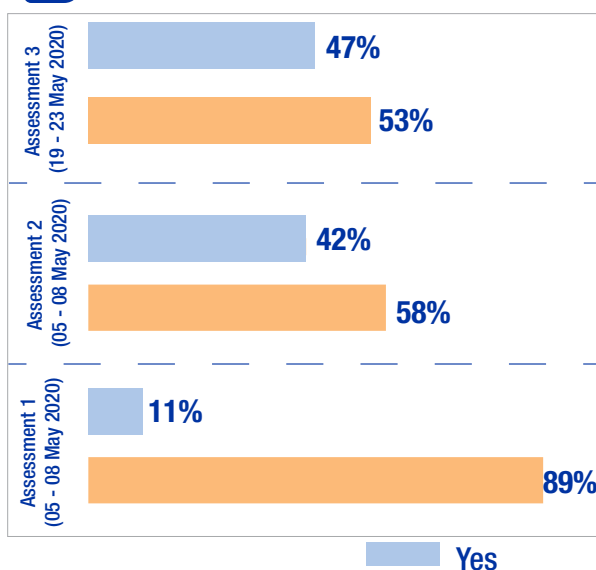
Preparedness

When asked if actions for COVID-19 prevention and control are taken in the assessed resettlement sites, 97 per cent report taking actions while the remaining three per cent are not taking any actions, the sites (Magueba and Manhama 2) that are not taking any actions are located in Sussudenga district of Manica province.

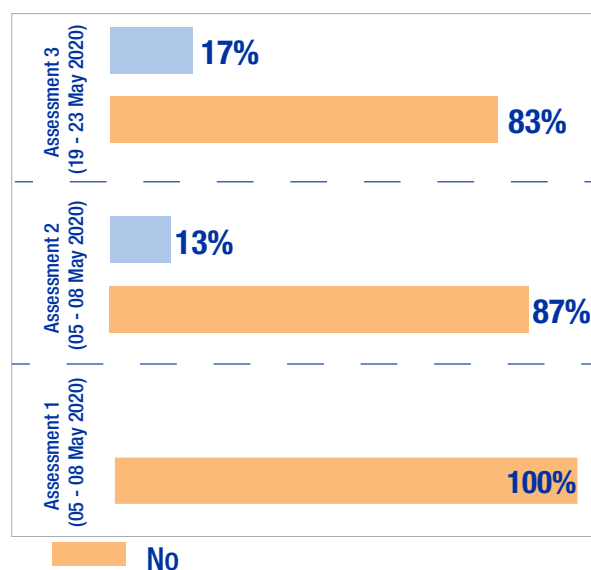
When asked if basic COVID-19 Personal Protective Equipment (masks, gloves, etc.) available on site, 17 per cent of the assessed sites reported having personal protective supplies.



In the past month, have any new hand-washing stations with soap and water been built?



Is there any COVID-19 protective equipment available in the site (masks, gloves, etc.)?



The depiction and use of boundaries, geographic names, and related data shown on maps and included in this report are not warranted to be error free nor do they imply judgment on the legal status of any territory, or any endorsement or acceptance of such boundaries by IOM.



Annex 1: Preparedness Matrix for Resettlement Sites in Manica Province

Province	District	Site name	Were there any actions for COVID-19 prevention and control taken in the site?	Were people living in the site informed of the COVID-19 precaution measures?	Were there any awareness sessions held in the site to inform people of the COVID-19 precaution measures?	In the past month, any new hand washing station with soap and water was built?	Any of the COVID-19 protective equipment available in the site (masks, gloves, etc.)?	Is there isolation space available in the site?	Total households	Total individuals
Manica	Sussundenga	25 de Setembro	Yes	Yes	Yes	No	No	No	163	1,050
		Bairro da unidade	Yes	Yes	Yes	No	No	No	322	1,834
		Chibue	Yes	Yes	Yes	No	No	No	153	1,513
		Chibue Mateo	Yes	Yes	Yes	No	No	No	98	542
		Chiruca	Yes	Yes	Yes	No	No	No	30	147
		Gudza	Yes	Yes	Yes	No	No	No	144	864
		Javera	Yes	Yes	Yes	No	No	No	30	134
		Machacuari	Yes	Yes	Yes	No	No	No	22	107
		Macocoe	Yes	Yes	Yes	Yes	No	No	148	678
		Madibunhana	Yes	Yes	Yes	No	No	No	196	774
		Magaro	Yes	Yes	Yes	Yes	No	No	203	1,340
		Magueba	No	Yes	No	No	No	No	120	485
		Manhama 1	Yes	Yes	Yes	Yes	No	No	86	428
		Manhama 2	No	Yes	Yes	Yes	No	No	263	1,202
		Manhandure	Yes	Yes	Yes	No	No	No	97	359
		Matarara	Yes	Yes	Yes	Yes	No	No	194	830
		Metchisso	Yes	Yes	Yes	No	No	No	217	764
		Minas Gerais	Yes	Yes	No	No	No	No	142	632
		Muawa	Yes	Yes	Yes	Yes	No	No	262	1,310
		Muchai	Yes	Yes	Yes	No	No	No	56	243
		Muchambanha	Yes	Yes	Yes	No	No	No	56	214
		Mucombe	Yes	Yes	Yes	No	No	No	143	599
		Muoco Chiguendere (Madudo)	Yes	Yes	Yes	No	No	No	72	601
		Mutassa	Yes	Yes	Yes	No	No	No	36	170
		Ngurue	Yes	Yes	Yes	No	No	No	137	583
		Nhamississua	Yes	Yes	Yes	No	No	No	46	182
		Nhanhamba 1	Yes	Yes	Yes	No	No	No	548	1,409
Nhanhamba 2	Yes	Yes	Yes	No	No	No	260	1,087		
Tossene Choma	Yes	Yes	Yes	No	No	No	339	2,004		
Zibuia	Yes	Yes	Yes	No	No	No	61	355		
Zichão	Yes	Yes	Yes	No	No	No	48	160		

Annex 2: Preparedness Matrix for Resettlement Sites in Sofala Province

Province	District	Site name	Were there any actions for COVID-19 prevention and control taken in the site?	Were people living in the site informed of the COVID-19 precaution measures?	Were there any awareness sessions held in the site to inform people of the COVID-19 precaution measures?	In the past month, any new hand washing station with soap and water was built?	Any of the COVID-19 protective equipment available in the site (masks, gloves, etc.)?	Is there isolation space available in the site?	Total households	Total individuals
Sofala	Buzi	Bandua 2019	Yes	Yes	Yes	Yes	Yes	No	866	3,646
		Bandua sede	Yes	Yes	Yes	Yes	Yes	No	660	3,030
		Begaja	Yes	Yes	Yes	Yes	Yes	No	210	1,633
		Chingemidji	Yes	Yes	Yes	Yes	Yes	No	446	1,592
		Estaquinha sede	Yes	Yes	Yes	Yes	No	No	299	1,492
		Inhaju 2019	Yes	Yes	Yes	Yes	No	No	446	2,231
		Machonjo va	Yes	Yes	Yes	No	No	No	512	2,560
		Maximedje	Yes	Yes	Yes	Yes	No	No	189	935
		Maxiquiri 2	Yes	Yes	Yes	Yes	No	No	266	810
		Maxiquiri alto/Maxiquiri 1	Yes	Yes	Yes	Yes	Yes	No	1,594	10,528
	Mussocosa	Yes	Yes	Yes	Yes	No	No	42	148	
	Nhamacuta	Yes	Yes	Yes	Yes	No	No	430	2,150	
	Caia	Magagade	Yes	Yes	Yes	Yes	No	No	175	966
		Ndoro	Yes	Yes	Yes	Yes	No	No	200	1,000
		Nhacuecha	Yes	Yes	Yes	Yes	No	No	215	1,141
		Tchetcha 1	Yes	Yes	Yes	Yes	No	No	218	1,115
		Tchetcha 2	Yes	Yes	Yes	Yes	No	No	184	963
	Chibabava	Chicuaxa	Yes	Yes	Yes	No	No	No	551	2,755
		Geromi	Yes	Yes	Yes	No	No	No	384	1,920
		Macarate	Yes	Yes	Yes	No	No	No	461	2,305
		Mdhala	Yes	Yes	Yes	Yes	No	No	160	915
	Dondo	Muconja	Yes	Yes	Yes	No	No	No	250	2,750
		Mandruzi	Yes	Yes	Yes	Yes	Yes	No	375	1,856
		Mutua	Yes	Yes	Yes	Yes	Yes	No	694	2,934
	Nhamatanda	Savane	Yes	Yes	Yes	Yes	No	No	259	681
		7 Abril - Cura	Yes	Yes	Yes	Yes	Yes	No	164	809
		Metuchira	Yes	Yes	Yes	Yes	No	No	370	2,083
		Ndedja_1	Yes	Yes	Yes	Yes	Yes	No	475	2,534

Annex 3: Preparedness Matrix for Resettlement Sites in Tete and Zambezia Provinces

Province	District	Site name	Were there any actions for COVID-19 prevention and control taken in the site?	Were people living in the site informed of the COVID-19 precaution measures?	Were there any awareness sessions held in the site to inform people of the COVID-19 precaution measures?	In the past month, any new hand washing station with soap and water was built?	Any of the COVID-19 protective equipment available in the site (masks, gloves, etc.)?	Is there isolation space available in the site?	Total households	Total individuals
Tete	Cidade De Tete	Matundo - unidade Chimbonde	Yes	Yes	Yes	No	No	No	565	2,846
	Mutarara	Nkganzo	Yes	Yes	Yes	No	No	No	63	327
		Panducani		Yes	Yes	Yes	Yes	No	No	80
Zambezia	Maganja Da Costa	Landinho	Yes	Yes	Yes	Yes	Yes	No	300	1,500
		Mussaia	Yes	Yes	Yes	Yes	Yes	No	668	3,300
		Parreirão	Yes	Yes	Yes	Yes	Yes	No	920	3,860
	Namacurra	Brigodo	Yes	Yes	Yes	No	No	No	481	1,575
		Gogodane	Yes	Yes	Yes	No	No	No	42	240
		Mucoa	Yes	Yes	Yes	No	No	No	125	426
		Munguissa	Yes	Yes	Yes	Yes	No	No	211	866
		Ronda	Yes	Yes	Yes	No	No	No	260	642
		Digudiua	Yes	Yes	Yes	No	No	No	193	778
Nicoadala	Namitangurini	Yes	Yes	Yes	No	No	No	218	1,565	