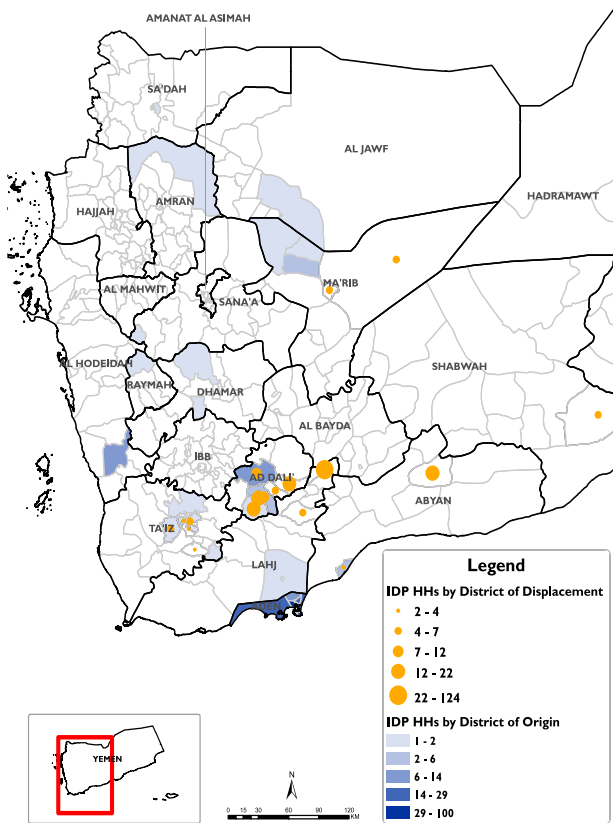


RAPID DISPLACEMENT TRACKING (RDT)

Reporting Period : 24 - 30 May 2020

Published on: 31 May 2020

Displaced Households by District of Displacement and Origin



*Based on data collected during 24 - 30 May, 2020

Number of Displaced Households (IDP HHs) per Governorate

Governorate	IDP HH Displaced during the week	IDP HH who left displaced location within the week	Total IDP HH
	24 to 30 May		01 Jan to 30 May
Hajjah	N/A	N/A	N/A
Al Dhale'e	82	0	1,571
Al Hudaydah	0	0	947
Taizz	22	0	1,265
Amanat Al Asimah	N/A	N/A	N/A
Ibb	N/A	N/A	N/A
Marib	10	0	8,268
Amran	N/A	N/A	N/A
Sana'a	N/A	N/A	N/A
Shabwah	5	2	142
Lahj	131	0	472
Aden	0	0	12
Sa'ada	N/A	N/A	N/A
Abyan	17	3	434
Dhamar	N/A	N/A	N/A
Hadramaut	6	0	826
Al Bayda	0	0	135
Al Jawf	0	0	211
Raymah	N/A	N/A	N/A
Al Mahwit	N/A	N/A	N/A
Socotra	0	0	0
Al Maharah	9	0	146
Total	282	5	14,429

DISPLACEMENT TRACKING

DTM's Rapid Displacement Tracking (RDT) tool collects and reports on numbers of households forced to flee on a daily basis, allowing for regular reporting of new displacements in terms of numbers, geography and needs. In the first nine months of 2019, conflict has resulted in new patterns of displacement, particularly in within Hajjah, Al Hudaydah, Al Dhale'e, Taizz governorates.

WEEKLY UPDATE

Between 24 and 30 May, newly displaced households were recorded in Lahj (131 HH), Al Dhale'e (82 HH), and Taizz (22 HH). Most of these displacements were the result of spread of COVID-19 in Aden (222 HH), Al Dhale'e (20 HH), and Al Hudaydah (9 HH).

IDP HH WHO LEFT DISPLACED LOCATIONS

5 IDP households left their location of displacement and moved either to their place of origin or to some other displaced location.

*Reported during 24 - 30 May, 2020

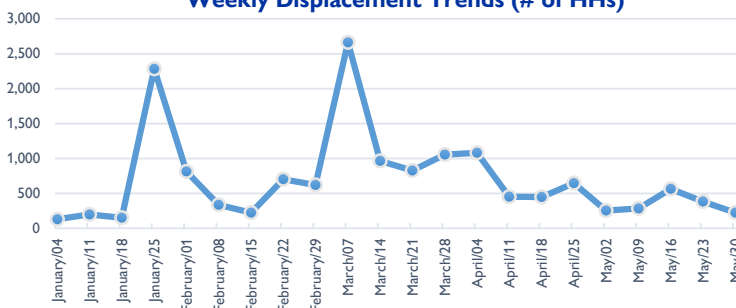
Displaced People
 14,429 Households
 86,574 Individuals

*Reported during Jan 01 - May 30, 2020

Returned People
 552 Households
 3,312 Individuals

*Reported during Jan 01 - May 30, 2020

Weekly Displacement Trends (# of HHs)



IDPs Shelter Types (within reporting period)

- With Host Families who are Relatives (no rental fee)
- In Rented Accommodation
- In Second Home
- In Settlements (Grouped of Families) Urban and Rural

