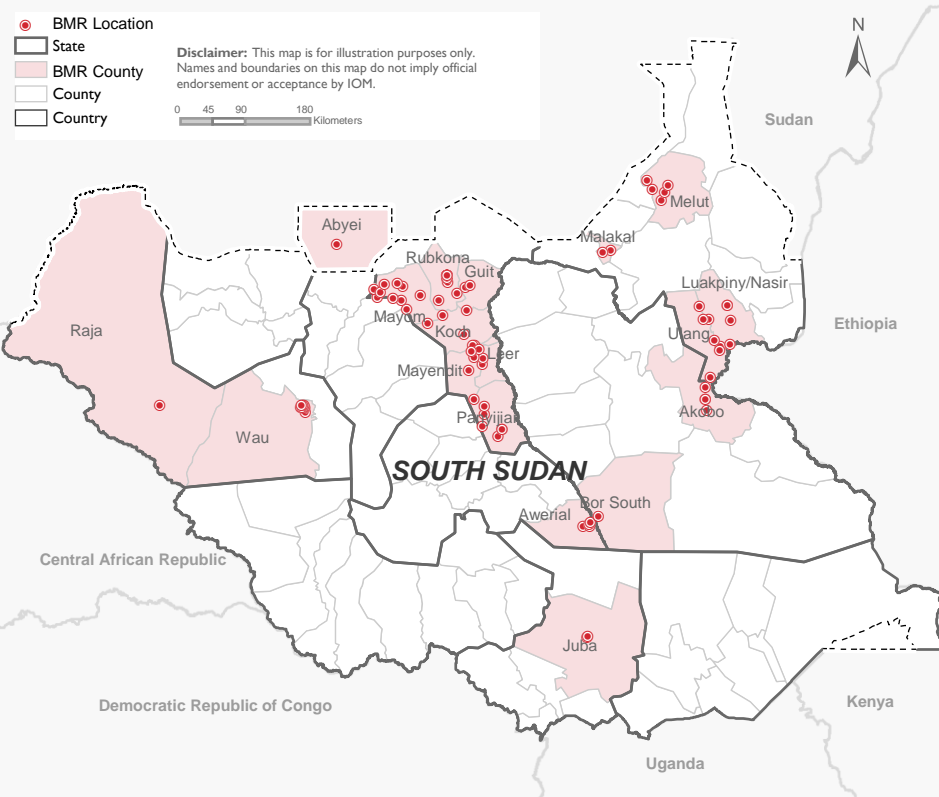


LOCATIONS OF THE ACTIVITIES



Active in DTM BMR database	919,098 Individuals
Targeted for Authentication	287,755 Individuals
Authenticated	273,549 Individuals
Newly Registered	0 Individuals
Deactivation	0 Individuals
Change of Checkpoint	0 Individuals
Lost Card Replacement	0 Individuals
Merging Households	0 Individuals
De-Registration	1,590 Individuals

County	Number of locations	Authenticated	Newly registered	Deactivation
Bor South	1	1,883	-	-
Guit	4	15,135	-	-
Juba	2	28,563	-	-
Malakal	1	27,701	-	-
Rubkona	3	152,417	-	-
Wau	7	47,850	-	-
Total	18	273,549	0	0

IOM's biometric registration system has been active since 2014, with 919,098 beneficiaries active in its database to date, out of which 56 per cent (514,351 individuals) are female; and 59 per cent (544,858 individuals) are under 18 years old. Since August 2018, IOM and the World Food Programme (WFP) are collaborating on the project "Enhancing targeted food distribution through biometric data management" seeking to contribute to increased food security throughout South Sudan. Under this collaboration, IOM is responsible for checking the eligibility of households receiving assistance through fingerprint authentication at selected distribution sites. Those beneficiaries whose households do not retrieve their food assistance in three consecutive distributions are assumed to no longer be present in the location and subsequently become deactivated. As a result, fluctuations in registered beneficiary numbers can be observed on an ongoing basis. **Biometric registration, complemented through regular authentication, enhances beneficiary targeting, avoiding duplications through fingerprint scanning and ensuring that the assistance reaches the intended beneficiaries.**

Note: To reduce the spread of the novel coronavirus (COVID-19), Biometric registration activities for the month of April 2020 were limited to critical and essential service provision such as authentication for food distribution.

Biometric maintenance work is supported by a variety of donors, including DFID, ECHO and USAID alongside funds received from WFP.

DEFINITIONS

Active in DTM BMR database	Number of individuals registered and verified in the BMR database
Authenticated	Number of beneficiaries reached through WFP GFD authentication
Newly Registered	Number of individuals who were newly registered, i.e. new entries into the system
Deactivation	Number of beneficiaries who missed 3 consecutive food distributions and have been deactivated from the database system
Change of Checkpoint	Number of individuals for whom the checkpoint (registration location) was changed, e.g. from Bentiu PoC to Nhialdu
Lost Card Replacement	Number of individuals who were assisted by replacing lost cards
Merging Households	Number of beneficiaries who wish to be joined with another family, i.e. merged into one household with a single beneficiary card
De-Registration	As a result of a relocation/facilitated returns or other movement out of the site.