



# EMERGENCY TRACKING TOOL (ETT)

DTM Emergency Tracking Tool (ETT) is deployed to track and provide up-to-date information on sudden displacement and other population movements

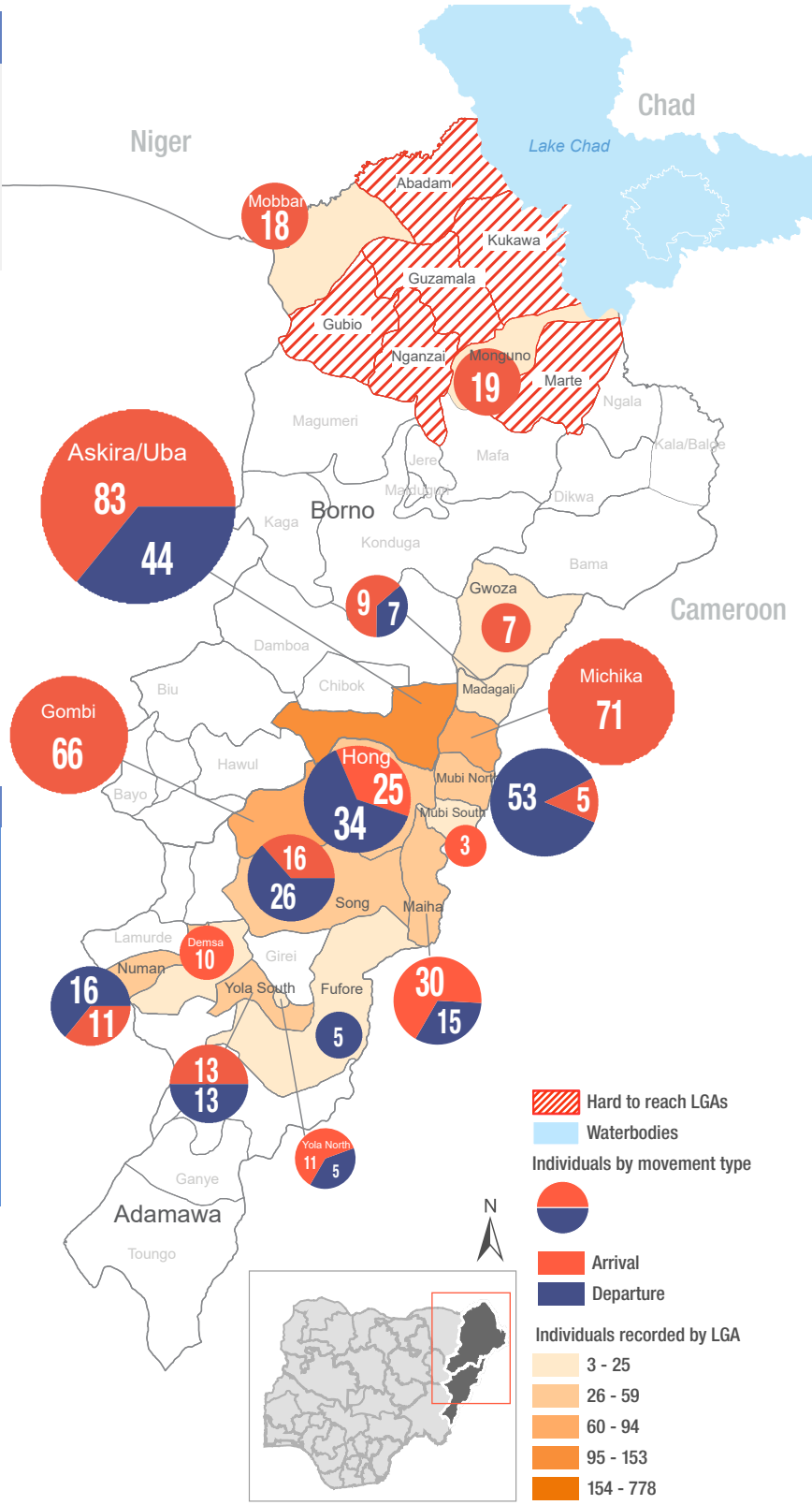
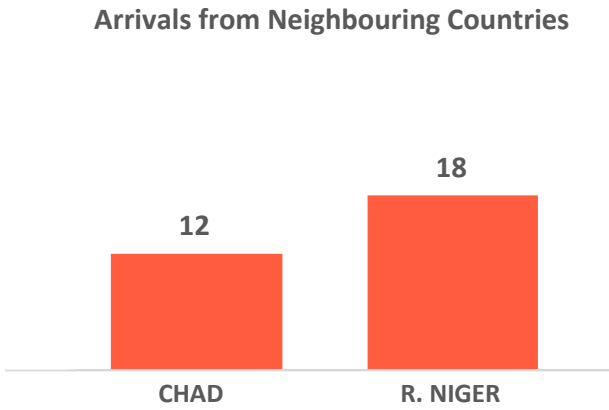
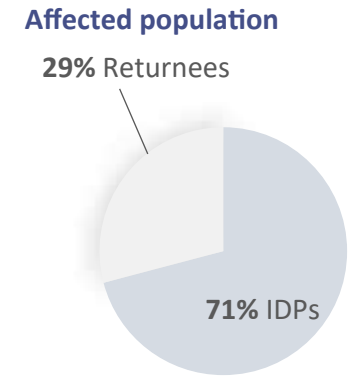
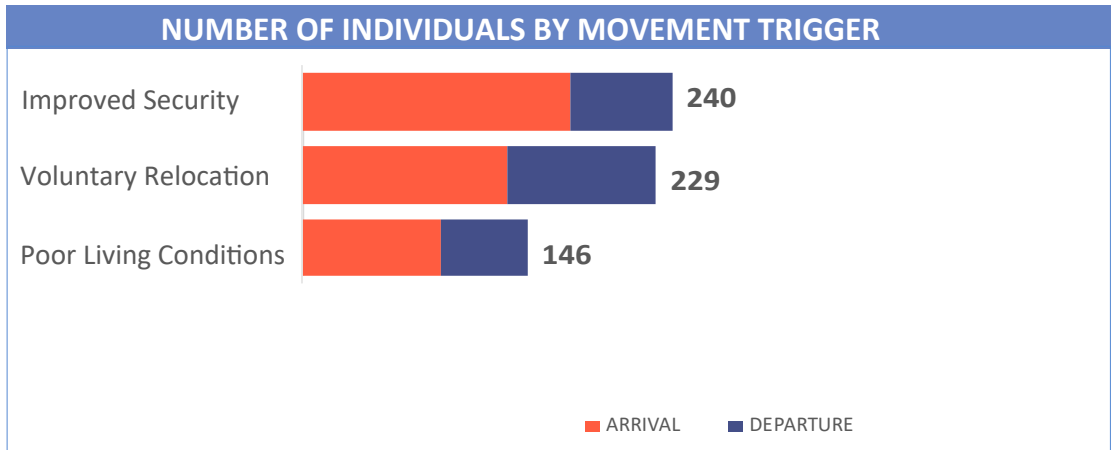
## ETT Report: No. 169 | 27 April - 3 May 2020

MOVEMENTS	NEW ARRIVAL SCREENING BY NUTRITION PARTNERS
<p><b>Arrivals:</b> 397 individuals</p> <p><b>Departures:</b> 218 individuals</p>	<p><b>12</b> Children (6-59 months) screened for malnutrition</p> <p><b>MUAC category of screened children</b></p> <p>Green: 10   Yellow: 2   Red: 0</p>

During the period of 27 April - 3 May 2020, a total of 615 movements were recorded, composed of 397 arrivals and 218 departures. Arrivals were recorded at locations in Askira/Uba, Monguno, Gwoza and Mobbar Local Government Areas (LGAs) of Borno State. Arrivals were also recorded in Demsa, Madagali, Maiha, Gombi, Hong, Michika, Mubi North, Mubi South, Numan, Song, Yola North and Yola South LGAs of Adamawa State.

Departures were recorded in Askira/Uba LGA of Borno State; Fufore, Yola North, Hong, Madagali, Maiha, Mubi North, Numan, Song, and Yola South LGAs of Adamawa State also recorded departures.

ETT assessments identified the following movement triggers: improved security (39.0%), voluntary relocation (37.2%) and poor living condition (23.7%)



\* Movements in Kala/Balge were captured by ETT outreach staff in the LGA

## SUMMARY OF MAJOR MOVEMENTS

**Askira/Uba:** 83 arrivals and 44 departures were recorded in Askira/Uba LGA of Borno state. The arrivals include 56 from Gatamarwa ward in Chibok LGA and 8 from Husara/Tampul ward in Askira/Uba LGA of Borno State. 19 Arrivals were also recorded from Michika LGA in Adamawa State. 38 of the departures recorded were from Gombi LGA and 6 from Hong LGA in Adamawa State. 64% of the movements were due to voluntary relocation and 36% were due to improved security.

**Michika:** 71 arrivals were recorded in Michika LGA of Adamawa state. The arrivals include 24 from Hong LGA, 18 from Yola South LGA, 10 from Song LGA in Adamawa state and 19 from Askira/Uba LGA in Borno state. All movements were as a result of improved security.

**Gombi:** 66 arrivals were recorded in Gombi LGA of Adamawa State. 38 arrivals were recorded in Askira/Uba LGA, 18 from Maiha LGA, 5 from Girei LGA and 5 from Mubi South LGA of Adamawa State. 92% of movements recorded were as a result of improved security and 8% voluntary relocation.

**Hong:** 25 arrivals and 34 departures were recorded in Hong LGA of Adamawa state. 13 of the arrivals were from Song in Adamawa state while 12 from Hong LGA in Adamawa state. 18 reported departures were from Hong ward of Hong LGA and 16 from Maiha LGA in Adamawa state. 58% of the recorded movements were due to voluntary relocation and 42% improved security.

## NEW ARRIVAL MALNUTRITION SCREENING SUMMARY (CHILDREN 6-59 MONTHS)

An exhaustive nutrition screening using mid upper arm circumference (MUAC) and Oedema for acute malnutrition was conducted by Nutrition Sector partners for 12 children of 6-59 months. Of the 12 children screened, the MUAC reading was no child (accessible areas) in the Red category, 2 were in the Yellow category and 10 were measured in the Green category. No case of Oedema was reported in the 2 LGAs that reports were received from.

The results also includes 4 children from neighbouring country, Republic of Niger. All 4 children moved to Damasak ward, Mobbar LGA. 3 of the children were screened into the Green category and 1 in the Yellow category. All children found with acute malnutrition have been admitted in the treatment programme.

LGA	MUAC Categories						Total
	Green (>12.5cm)		Yellow (11.5cm - 12.5cm)		Red (<11.5cm)		
	Inaccessible	Accessible	Inaccessible	Accessible	Inaccessible	Accessible	
Gwoza	0	4	0	1	0	0	5
Mobbar	0	6	0	1	0	0	7
Total	0	10	0	2	0	0	12

■ Nourished

■ Moderate Acute Malnutrition (MAM)

■ Severe Acute Malnutrition (SAM)

Please note, the data presented are not surveillance results and should be interpreted with caution.

**Table 1. Details of movements by locations of assessment and locations of arrival / departure - only movements with at least 7 persons are listed below**

Tracking location			Movement location			ARRIVAL	DEPARTURE	GRAND TOTAL	
STATE	LGA	WARD	STATE	LGA	WARD				
ADAMAWA	DEMSA	DONG	ADAMAWA	DEMSA	DONG	10	-	10	
	GOMBI	GARKIDA	ADAMAWA	MAIHA	MAYONGULI	18	-	18	
	HONG	DAKSIRI	GARAHA	BORNO	ASKIRA/UBA	NGULDE	38	-	38
				ADAMAWA	SONG	SONG WAJE	13	-	13
					HONG	HONG	-	18	18
					MAIHA	SORAU 'A'	-	16	16
	MADAGALI	K/WUROGAYANDI	ADAMAWA	MADAGALI	DUHU/SHUWA	9	-	9	
				MADAGALI	BEBEL	-	7	7	
	MAIHA	MAYONGULI	ADAMAWA	MAIHA	MANJEKIN	-	8	8	
	MAIHA	PAKKA	ADAMAWA	GOMBI	GARKIDA	-	7	7	
				MUBI NORTH	DIGIL	30	-	30	
	MICHIKA	MICHIKA I	ADAMAWA	SONG	SIGIRE	10	-	10	
				BORNO	ASKIRA/UBA	RUMIRGO	19	-	19
				ADAMAWA	HONG	KWARHI	24	-	24
					YOLA SOUTH	MAKAMA 'B'	18	-	18
	MUBI NORTH	DIGIL	ADAMAWA	MAIHA	SORAU 'A'	-	24	24	
				MUBI NORTH	KOLERE	-	9	9	
				HONG	HILDI	-	12	12	
	NUMAN	IMBURU	ADAMAWA	NUMAN	VULPI	-	7	7	
				LAMURDE	GYAWANA	7	-	7	
DEMSA				DONG	-	9	9		
SONG	SONG GARI	ADAMAWA	YOLA SOUTH	NAMTARI	-	12	12		
			MICHIKA	MICHIKA I	-	14	14		
			SHELLENG	SHELLENG	16	-	16		
YOLA NORTH	JAMBUTU	ADAMAWA	YOLA SOUTH	NAMTARI	7	-	7		
YOLA SOUTH	NAMTARI	ADAMAWA	YOLA NORTH	JAMBUTU	-	7	7		
			DEMSA	NASARAWO	8	-	8		
BORNO	ASKIRA/UBA	DILLE/HUYIM	BORNO	ASKIRA/UBA	HUSARA/TAMPUL	8	-	8	
			ADAMAWA	MICHIKA	BAZZA MARGHI	19	-	19	
			ADAMAWA	GOMBI	GARKIDA	-	38	38	
			BORNO	CHIBOK	GATAMARWA	56	-	56	
	GWOZA	PULKA/BOKKO	BORNO	MAIDUGURI	MAISANDARI	7	-	7	
MOBBAR	DAMASAK	R.NIGER	DIFFA	GUESKEROU	7	-	7		
				SHETTIMARI	11	-	11		
MONGUNO	MONGUNO	BORNO	KUKAWA	KEKENO	7	-	7		
		CHAD	KAYA	Ngouboua	12	-	12		

The depiction and use of boundaries, geographic names, and related data shown on maps and included in this report are not warranted to be error free nor do they imply judgment on the legal status of any territory, or any endorsement or acceptance of such boundaries by IOM.

\*MUAC data is provided by UNICEF

For more information or to report an alert, please contact:

Henry Kwenin, DTM Project Coordinator: [hkwenin@iom.int](mailto:hkwenin@iom.int) | +234 903 8852 524

Dave Bercasio, Emergency Coordinator: [dbercasio@iom.int](mailto:dbercasio@iom.int) | +234 907 5070 001

DTM information products: <http://dtm.iom.int/nigeria>

