

# COVID-19 MOVEMENT RESTRICTIONS

## LIBYA MOBILITY RESTRICTION DASHBOARD #3 (07 MAY 2020)

### Reported Covid-19 Cases in Libya

Source: National Center for Disease Control (NCDC), 6 May 2020

**64** Confirmed  
**37** Active Cases  
**24** Recovered  
**3** Deaths

### Mobility Restrictions

In response to the COVID-19 pandemic, Libyan authorities initiated public health measures in March 2020 aimed at curbing the spread of COVID-19. These measures include travel and mobility restrictions due to the closure of airports, points of entry (POE) along land borders and maritime boundaries, as well as domestic movement restrictions.

Most official points of entry along land borders are closed for entry and exit of passengers, including Ras Ajdir land border crossing which is currently closed after over 1,300 Tunisian migrants were previously allowed to re-enter Tunisia in the second half of April.

The Emsaed land border crossing with Egypt is open for Libyans to return home while Egyptian migrants are also allowed to return (in groups) to Egypt. Since DTM Libya's last mobility restrictions update on 23 April, around 5200 Libyans reportedly returned through Emsaed.

On 05 May 2020, Libyan authorities started the repatriation of Libyans stranded abroad through Misrata and Benghazi Benina airports. As of 06 May, over 790 Libyans had returned to Libya from Turkey, 315 from Jordan, 100 from Egypt, and 40 from Morocco.

Local authorities in border cities such as Al Kufra and Al Jaghbug have implemented stricter measures by implementing municipal entry restrictions into their cities.

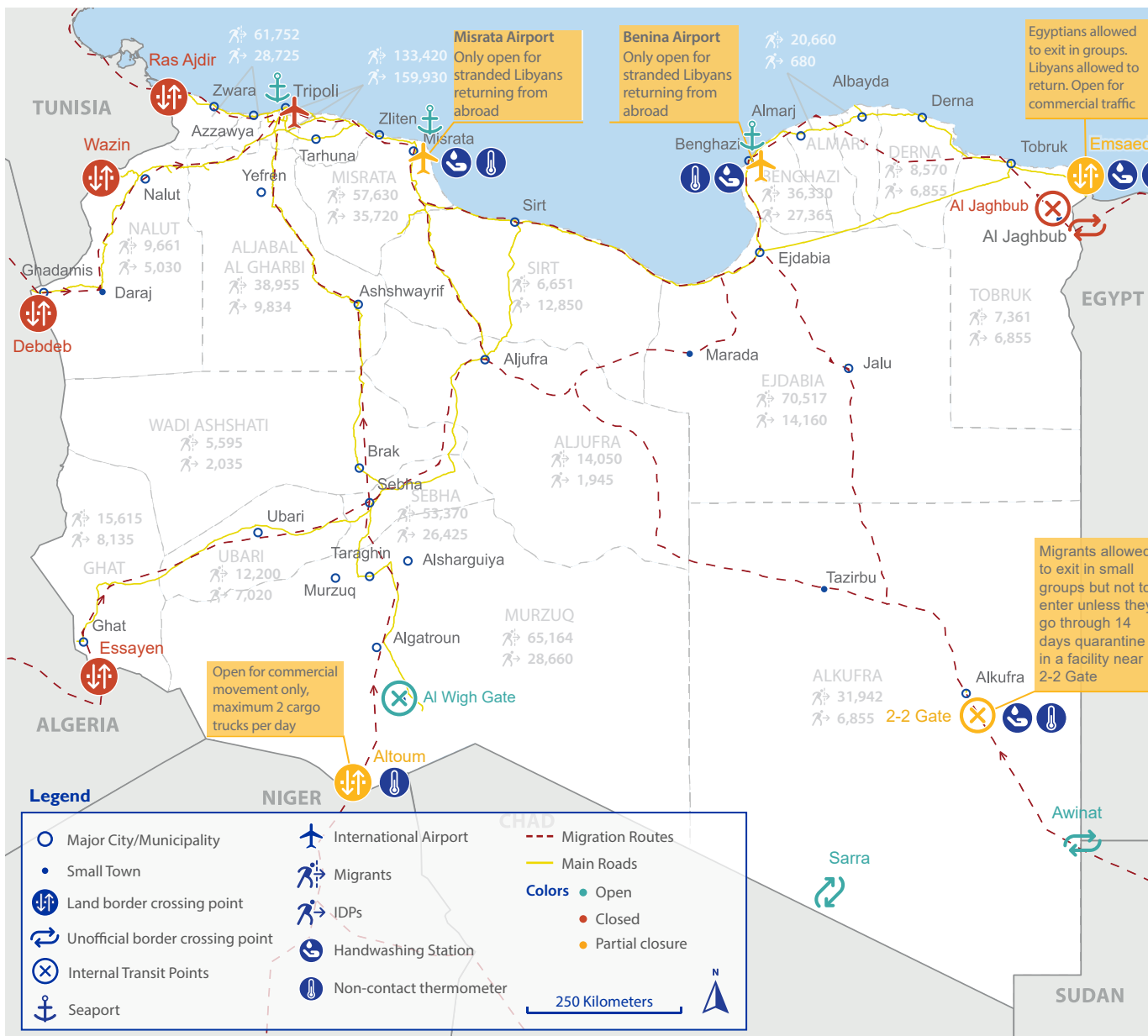
Seaports in Libya are only open for commercial traffic.

### Curfew period

Location	Curfew	Details
East	From 7PM to 7AM	Movement between cities is not allowed
West	From 6PM to 6AM	
South	From 7PM to 7AM	

**373,709** IDPs in Libya

**653,800** Migrants in Libya



This Map is for illustration purposes only. Name & boundaries on this map do not imply endorsement or acceptance by IOM  
 Data source: IOM, ESRI, Bureau of Statistics Libya.

# COVID-19 TIMELINE

UNTIL 07 MAY 2020



## Closure of airports & land borders

Closure of airports and land borders announced by the Presidential Council of the Government of National Accord (GNA) for 15 days

## 1<sup>st</sup> Covid-19 case

NCDC announces the first Covid-19 case in Tripoli, Libya

## 5 new cases in Misrata

5 new covid-19 cases recorded in Misrata.

## 1<sup>st</sup> Covid-19 death

First death due to COVID-19 reported in Libya

## 9 new covid-19 cases

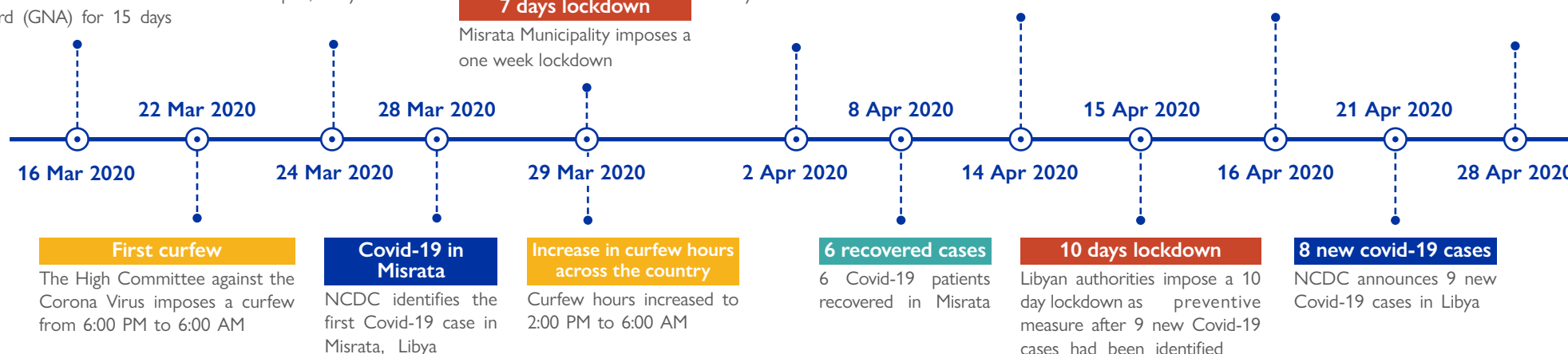
NCDC announce 9 new Covid-19 cases in Libya

## 13 new covid-19 cases

NCDC announces 13 new Covid-19 cases in Libya

## Curfew hours reduced

Curfew hours reduced to 6:00 PM to 6:00 AM



## IMPACT OF MOBILITY RESTRICTIONS IN LIBYA\*

### IMPACT ON LOCAL RESIDENTS

In **28%** of assessed locations, residents were reported to be unable to move freely within the municipality (due to the mobility restrictions/curfew)

### IMPACT ON MIGRANTS

In **35%** of assessed locations, migrants were reported to be unable to move freely within the municipality (due to the mobility restrictions/curfew)

In **93%** of assessed locations, migrants who rely on daily labor were reported to have been negatively affected due to Covid-19 induced slowdown in economic activities.

\*Data obtained through DTM Rapid Mobility Tracking carried out in 39 municipalities across Libya through 143 Key Informant Interviews (KIIs) between 19 April and 07 May 2020. Please see <http://dtm.iom.int/libya> for more details.