

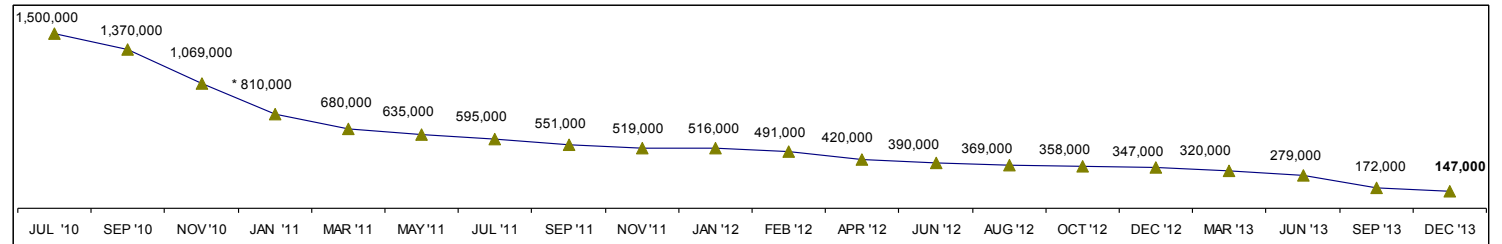
**DISPLACEMENT TRACKING MATRIX (DTM)
V2.0 UPDATE
10 January 2014**

<u>Outline:</u>	<u>Highlights:</u>
<p>Highlights</p> <ol style="list-style-type: none"> 1. Results of DTM Round 17 <ol style="list-style-type: none"> 1.1. The overall trends in the IDP population 1.2. IDP households <ol style="list-style-type: none"> 1.2.1. IDP households: living in open sites 1.2.2. IDP households: leaving closed sites 1.3. IDP individuals <ol style="list-style-type: none"> 1.3.1. IDP individuals: living in open sites 1.3.2. IDP individuals: leaving closed sites 1.4. IDP sites <ol style="list-style-type: none"> 1.4.1. Differences by commune 1.4.2. Size and location on IDP sites 1.4.3. Type of shelters within IDP sites 1.4.4. Public vs. private land hosting IDP sites 1.4.5. Data on closed IDP sites 1.4.6. Location and size of closed sites 2. Camp Closures since 2010: evictions, return and relocation, spontaneous returns 3. DTM methodology 	<ul style="list-style-type: none"> ▪ Four years after the devastating earthquake that struck Haiti in January 2010, an estimated 146,573 individuals (comprising approximately 39,464 households) remain in 271 IDP sites. ▪ Compared to the previous assessment, there is a decrease of 25,401 IDP individuals, or 5,816 IDP households, corresponding to a 15% decrease in the number of individuals and 13% households, respectively. ▪ Between September and December 2013, 41 IDP sites were closed, equivalent to an 11% decrease compared to the September 2013 figures. ▪ Since 2010, the IDP caseload has decreased by 90% and the number of IDP sites by 83%. ▪ In the period under observation, rental subsidies accounted for the departure of 7,243 IDP households, 90% of the total IDP households that left open and closed sites, and the closure of 38 IDP sites. ▪ In 2013, the net decrease in IDP caseload accounted for almost 49,000 IDP households, 200,700 IDP individuals, and 179 IDP sites (the figures include Canaan Jerusalem and Onaville). ▪ Out of the 179 IDP sites closed in 2013, 162 were closed due to rental subsidies, and 7 due to evictions. ▪ 3 large sites were closed in 2013 (Boliman Brant, Aviation Block 6 and 7).

1. RESULTS OF DTM ROUND 17

DTM v2.0 is in its seventeenth round of implementation. This report presents the results from field assessments that were conducted between November and December 2013¹.

Graph 1: Total number of displaced individuals from July 2010 to December 2013 (figures rounded)



(*) In January 2011 the areas surrounding Corail, known as Canaan, Jerusalem, and Onaville, were included in DTM assessments upon the request of the Humanitarian Country Team.

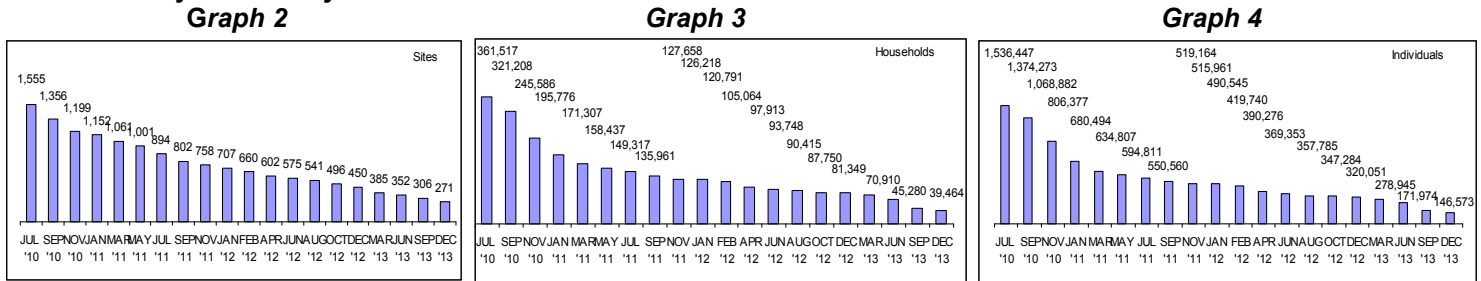
(**) In September 2013 the areas surrounding Corail, known as Canaan Jerusalem and Onaville, were removed from DTM assessment at the request of the Government of Haiti.

Table A: Estimated Number of IDP Sites, Households and Individuals Identified Through DTM – Total by Month July 2010 to December 2013

Month	Sites	Households	Individuals
JUL '10	1,555	361,517	1,536,447
SEP '10	1,356	321,208	1,374,273
NOV '10	1,199	245,586	1,068,882
JAN '11	1,152	195,776	806,377
MAR '11	1,061	171,307	680,494
MAY '11	1,001	158,437	634,807
JUL '11	894	149,317	594,811
SEP '11	802	135,961	550,560
NOV '11	758	127,658	519,164
JAN '12	707	126,218	515,961
FEB '12	660	120,791	490,545
APR '12	602	105,064	419,740
JUN '12	575	97,913	390,276
AUG '12	541	93,748	369,353
OCT '12	496	90,415	357,785
DEC '12	450	87,750	347,284
MAR '13	385	81,349	320,051
JUN '13	352	70,910	278,945
SEP '13	306	45,280	171,974
DEC '13	271	39,464	146,573

¹ The overall figures reported no longer include the population in the locations surrounding Corail Sector 3 and 4 IDP sites, referred to as Canaan, Jerusalem, and Onaville. These areas were included in the assessments as of January 2011 and removed in September 2013 following the request of the Government of Haiti (GOH).

Graphs 2 – 3 – 4: Number of IDP Sites (Graph 2), Households (Graph 3), and Individuals (Graph 4), identified through DTM – Total by Month July 2010 to December 2013



1.1. The overall trends in the IDP population

Four years after the 2010 Haiti earthquake, an estimated 39,464 IDP households or 146,573 IDP individuals remain in 271 IDP sites. They represent 10% of the initial caseload, indicating a decrease of approximately 90% in IDP population and a 83% decrease in the number of IDP sites compared to 2010² when internal displacement in Haiti was at its height.

Compared to the previous report (September 2013), a 15% decrease in IDP individuals and 13% in the number of IDP households was observed. This rate of decrease is in line with that observed in 2013; however, it should be noted that as the overall caseload drops, the same rate of decrease translates into fewer people leaving camps in absolute numbers.

More than 90% of the observed reduction in IDP households was due to return programs offering rental subsidies carried out by various partners, followed by IDP leaving camps spontaneously. Evictions leading to camp closure affected 2 IDP households in the past 3 months.

Table B: Comparison of number of IDP Sites, Households and Individuals by commune in July 2010, September and December 2013

Commune	Sites July '10	Sites Sep '13	Sites Dec '13	Households July '10	Households Sep '13	Households Dec '13	Individuals July '10	Individuals Sep '13	Individuals Dec '13
CARREFOUR	172	56	55	48,273	4,734	4,737	205,162	16,418	15,900
CITE SOLEIL	63	20	21	16,535	2,567	2,756	70,273	10,977	11,132
CROIX-DES-BOUQUETS	115	6	5	24,722	2,578	2,339	105,064	11,274	10,788
DELMAS	279	74	57	82,086	19,438	15,548	348,859	74,700	56,833
GANTHIER	7	0	0	1,438	0	0	6,111	0	0
PORT-AU-PRINCE	193	71	68	70,856	8,427	7,665	301,156	30,278	27,333
TABARRE	85	22	21	17,177	3,453	2,939	73,001	12,362	10,639
PETION-VILLE	112	34	28	24,604	2,485	2,030	104,560	9,595	8,125
GRAND-GOAVE	60	1	0	8,157	12	0	34,665	50	0
GRESSIER	62	7	3	10,014	206	167	42,560	798	654
JACMEL	54	0	0	6,145	0	0	26,115	0	0
LEOGANE	253	14	13	39,260	1,291	1,283	166,859	5,191	5,169
PETIT-GOAVE	100	1	0	12,250	89	0	52,062	331	0
Total	1,555	306	271	361,517	45,280	39,464	1,536,447	171,974	146,573
Difference Sep '13 - Dec '13		Sites	-35	Households	-5,816	Individuals	-25,401		
% of Sept '13		Found in Dec '13	89%	Found in Dec '13	87%	Found in Dec '13	85%		
% of decrease in Dec '13			11%		13%		15%		

In the current reporting period, more than 1,200 IDP households moved to camps³. In the absence of this added caseload, the absolute decrease would equal 8,022 IDP households. Of those, 7,243 or 90.3% left camps via rental subsidies. The phenomenon of new families moving into camps and families splitting and occupying more tents constitutes a worrying trend observed in 68 IDP sites. The common reasons for IDPs moving into camps are: 1) splitting tents with other households; 2)

² July 2010 DTM release.

³ Ongoing registration and follow-up verification efforts have resulted in adjustments made to the overall IDP caseload, reflecting a total of 2,206 IDP households added.

cases rejected by the Grievance Mechanism; 3) families outside of camps reuniting with families living inside camps. This trend calls for an urgent definition of the final list of eligible IDPs and requires a strong commitment from the GOH to consider the list definitive.

1.2 IDP Households

1.2.1. IDP households: open sites

In December 2013 there were 39,464 households living in IDP sites, corresponding to a net decrease of 5,816 IDP households compared to the previous reporting period.

Compared to the July 2010 DTM release, the IDP household population decreased by 89% and by 13% when compared to the figures reported in September 2013.

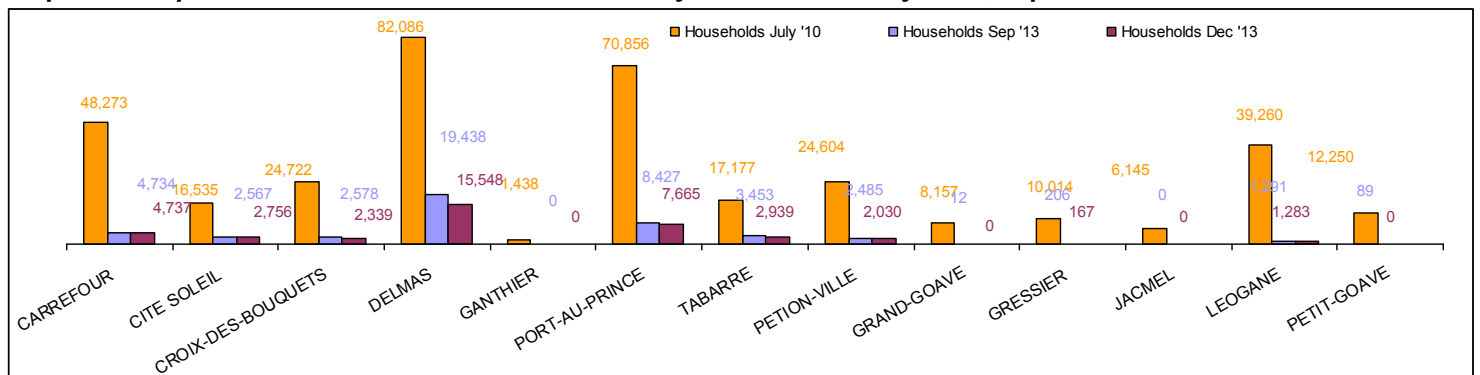
The commune with the highest number and percentage of IDP households remains Delmas, still hosting 15,000 IDP households or 39.4% of the total. The second largest commune is Port-au-Prince, which in December 2013 contained 7,665 IDP households, or 19.4% of the total, followed by Carrefour with almost 5,000 IDP households, equivalent to 12%. Together, the three communes account for 70.8% of IDP households still displaced after the 2010 earthquake.

The remaining four communes in the Port-au-Prince metropolitan area (Cite Soleil, Croix des Bouquets, Petion Ville and Tabarre) still host between 2,000 and 3,000 IDP households each. Together, they account for 25.5% of total IDP households. In Croix des Bouquets, all remaining camps have little to no prospect of being emptied and other durable solutions need to be identified..

Leogane hosts 3.2% of the remaining population, equivalent to 1,283 households, or 88.5% of the total displacement caseload outside of Port-au-Prince. Gressier houses the remaining IDPs (167 households).

In terms of decrease in open camps, the largest was observed in the 3 communes of Delmas and Petion Ville and Tabarre that respectively experienced a IDP HH decrease of approximately 25%, 22%, and 17% respectively. The largest share of decrease in open camps was due to the ongoing relocation of almost 1,500 IDP families from camp Terrain Accra in the area of Delmas 31; in Petion Ville nearly 250 IDP families were relocated from camp Accra 2; and in Tabarre where most of the decrease was accounted for by the relocation of 430 families from three camps (Parc Mina, Parc Heritier de Cazeau, Refuge Pak Bope). In Port au Prince, most of the observed 10% reduction was due to the relocation of more than 800 IDP households from La Boulangerie and Terrain de Golf.

Graph 5: Comparison of number of IDP households by commune in July 2010, September and December 2013



1.2.2. IDP households: closed sites

The decrease in IDP households due to camp closure accounts for 69.4% of the decrease observed in the period and equals 3,619 IDP households.

Table C: Distribution of IDP households that left closed camps by commune and reason for camp closure between September and December 2013

Reason	CARREFOUR	CROIX-DES-BOUQUETS	DELMAS	GRAND-GOAVE	GRESSIER	LEOGANE	PETION-VILLE	PETIT-GOAVE	PORT-AU-PRINCE	TABARRE	Total Of HHs	%
IDP's have been evicted	2										2	0.1%
IDP's moved out for other reason					2				83		85	2.3%
Return solution support		5	2972	12	40	6	177	89	132	99	3,532	97.6%
Total	2	5	2972	12	42	6	177	89	215	99	3,619	100.0%

Camp closure is mainly a consequence of return programs carried out by various partners between September and December 2013. Return programs offering rental subsidies were responsible for the relocation of 3,532 IDP households, accounting for 97.6 % of the decrease leading to camp closure.

Return programs offering rental subsidies managed by different partners in Delmas account for 83% of the decrease leading to camp closure. The largest decrease in Delmas was due to the closure of the IDP site Boliman Brant which included over 2,700 IDP households that benefited from rental subsidies.

In Petion Ville, 100 IDP households were relocated and the IDP site OJFDP closed, among other small 5 camps.

In Port-au-Prince, the closure of 2 medium size camps, Camp Avic and Mon Lopital/Balini, led to the relocation of 160 IDP households.

1.3. IDP Individuals

1.3.1. IDP individuals: open sites

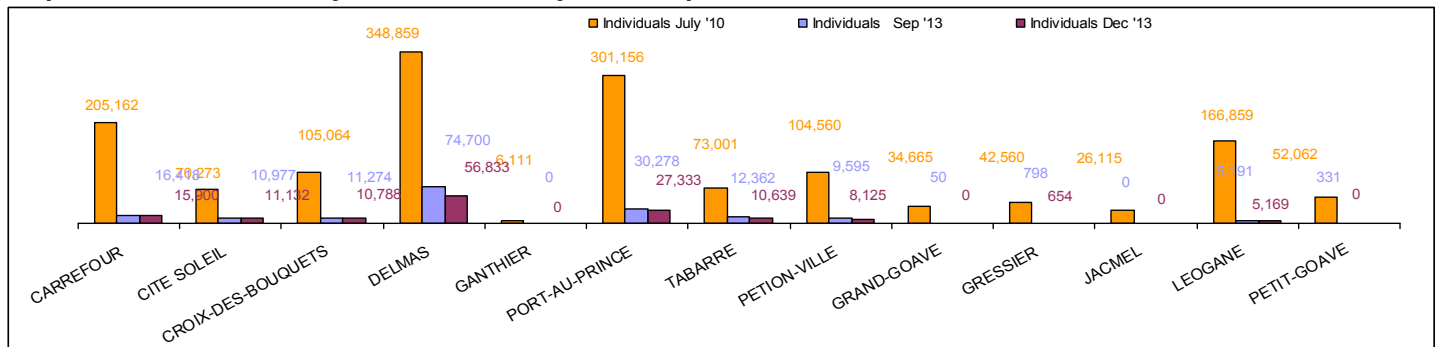
In December 2013 there were 146,573 IDP individuals living in camps, indicating a decrease of 25,401 IDP individuals compared to the previous reporting period.

A total of 90% decrease was observed in the total IDP individual population compared to July 2010 figure and a 15% decrease when compared to the population reported in the previous period (September 2013). It should be noted that the rate of decrease of IDP individuals has been higher over time than that of IDP households. The fact that the average IDP family size has reduced from 4.6 persons per household in 2010 to 3.5 at the end of 2013 also supports this theory.

As observed among IDP households, the majority of IDP individuals live in the 3 communes of Delmas, Port au Prince and Carrefour. Delmas still hosts almost 57,000 IDP individuals or 39% of the total, and Carrefour and Port-au-Prince approximately 16,000 and 27,000, respectively. The 3 communes together account for 68.3% of the remaining IDP individuals in Haiti as of December 2013.

In the regions, there remains 3.9% or 5,823 of IDP individuals, mostly concentrated in Leogane (88.8%).

Graph 6: IDP individuals by commune in July 2010, September 2013 and December 2013



The commune with the largest IDP individuals decrease in open sites was Delmas, showing a 31.4% reduction. Petion Ville and Tabarre also showed a considerable decrease of 18.1% and 16.2%, respectively, compared to the previous DTM round. In Tabarre, almost 1,500 IDP individuals left 3 camps in the period under observation, and in Delmas 6,575 IDP individuals were relocated from Terrain Accra and 3 other large camps (camps with more than 500 households). In Port au Prince, 2,399 IDP individuals left camps due to rental subsidies, equivalent to a 10.8% decrease from the previous round.

In total, 61 IDP sites showed an increase in population corresponding to 5,524 IDP individuals. Cite Soleil is the only commune that reported an absolute increase in IDPs equal to 155 individuals; Delmas reported an increase of about 1,000 IDP individuals.

1.3.2. IDP individuals: closed sites

Camp closure accounts for 66.5% of the decrease observed in the period, equivalent to 16,886 fewer IDP individuals compared to the previous round.

Camp closure is mainly a direct consequence of return programs offering rental subsidies, which was responsible for the relocation of 16,563 IDP individuals, equivalent for 98.1 % of the total decrease.

In Carrefour, one IDP site housing 7 IDPs was evicted during the reporting period. 316 IDPs left camps spontaneously.

Table D: Distribution of IDP individuals that left closed camps by commune and reason for camp closure between September and December 2013

Reason	CARREFOUR	CROIX-DES-BOUQUETS	DELMAS	GRAND-GOAVE	GRESSIER	LEOGANE	PETION-VILLE	PETIT-GOAVE	PORT-AU-PRINCE	TABARRE	Total Of IDPs	%
IDP's have been evicted	7										7	0.04%
IDP's moved out for other reason					10				306		316	1.87%
Return solution support		18	14539	50	142	25	651	331	464	343	16,563	98.09%
Total	7	18	14539	50	152	25	651	331	770	343	16,886	100%

The commune with the largest decrease of IDP individuals is Delmas that accounts for 86.1% of the total decrease in closed sites, and is mainly attributed to the ongoing relocation of IDP individuals from Camp Terrain de Golf that in the period under observation saw the departure of 13,662 IDPs.

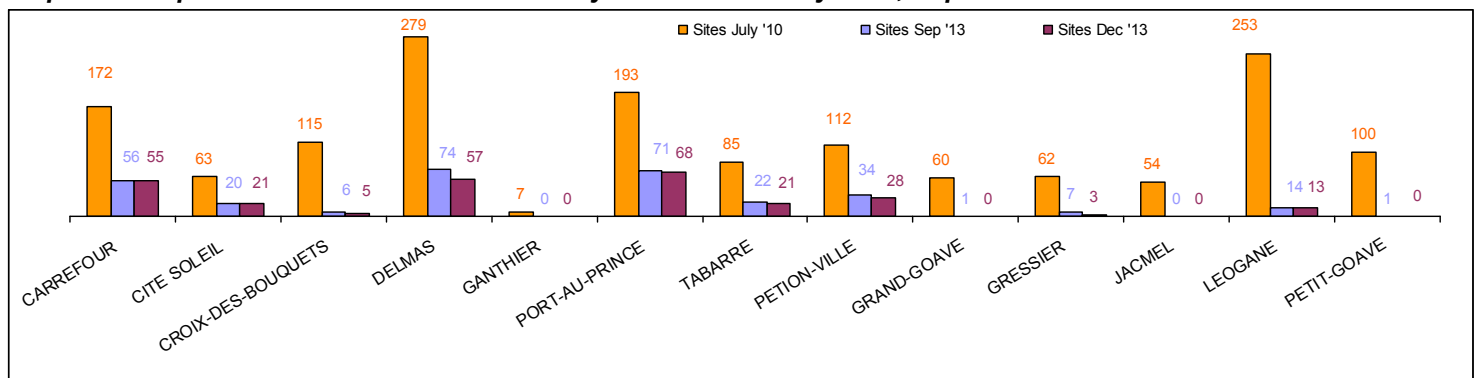
1.4. IDP Sites

Of the initial 1,555 sites identified in 2010 and tracked up until now, a total of 271 IDP sites (accounting for 17% of the initial sites in 2010), remain open as of this period. This corresponds to an 11% decrease since the previous DTM round.

1.4.1. Differences by Commune

The communes of Port-au-Prince, Delmas, and Carrefour have the largest number of IDP sites, with 68, 57 and 55 sites respectively, with Petion Ville and Tabarre following. The three communes combined amount to 66.4% of all sites open. Despite hosting 20.3% of the open sites, Carrefour houses approximately 12% of the remaining displaced population due to the small size of its numerous camps. On the other hand, Delmas, with 21% of remaining sites, hosts 39% of the total caseload due to the bigger size of its IDP sites.

Graph 7: Comparison of number of IDP Sites by commune in July 2010, September and December 2013



Only 5 camps remain open in Croix-des-Bouquets, all of which are T-Shelter sites.

In the Palm Region, 16 IDP sites remain open, which represent 5.9% of the total of open sites in the country. IDP sites in the Palm Region are mainly small, hosting 3.7% of the IDPs. The Léogane commune contains 13 sites, which is highest number of IDP sites outside Port-au-Prince. As of this reporting period, only the communes of Léogane and Gressier host sites: all remaining camps in the communes of Grand-Goave and Petit-Goave were closed.

1.4.2. Size and location of IDP Sites

Of the 271 IDP open sites, 172 or 63.5% are small sites comprising less than 100 IDP households. These sites shelter 18.8% of the IDP households. The remaining 99 are sites with more than 100 IDP households. There are still 7 IDP sites⁴ that host 1,000 households or more (equivalent to 25.2% of all IDP households, or approximately 9,938 households).

Table E: IDP Sites by number and percentage of Sites, Households, Individuals and Site size, December 2013

Site size by # of Households	N of Sites	% of Sites	N of Households	% of Households	N of Individuals	% of Individuals
Total	271	100%	39,464	100%	146,303	100%
1.1) 1 to 9	33	12.2%	139	0.4%	467	0.3%
1.2) 10 to 19	26	9.6%	357	0.9%	1,123	0.8%
2) 20 to 99	113	41.7%	5,745	14.6%	20,169	13.8%
3) 100 to 499	82	30.3%	16,566	42.0%	60,132	41.1%
4) 500 to 999	10	3.7%	6,719	17.0%	26,541	18.1%
5) 1000 plus	7	2.6%	9,938	25.2%	37,871	25.9%

⁴ Dahomey/Camp des Militants, Acra Cite Nord Del 33, Camp Maurice Bonnefil, Batimat, Terrain Toto, Acra Zone Sud (AD), Corail Sector 4.

As in previous rounds, the majority of the displaced population continues to reside in the larger⁵ sites located in the Port-au-Prince metropolitan area. In particular, 17 larger IDP sites or 6.3% of the total number of sites host 42.2% of IDP households⁶.

When looking at the geographical distribution of IDP sites by size, 6 out of 7 sites hosting more than 1,000 IDP households are in Delmas. Of the camps located in the Palmes Region, there are no large IDP sites, with 11 sites host less than 100 IDP households.

Table F: Number of IDP Sites by size (number of households) and commune, December 2013

Commune	Site size by # of Households						
	Total	1.1) 1 to 9	1.2) 10 to 19	2) 20 to 99	3) 100 to 499	4) 500 to 999	5) 1000 plus
Total	271	33	26	113	82	10	7
CARREFOUR	55	3	7	33	10	2	-
CITE SOLEIL	21	1	1	10	8	1	-
CROIX-DES-BOUQUETS	5	-	-	2	1	1	1
DELMAS	57	10	4	16	19	2	6
PETION-VILLE	28	7	4	10	6	1	-
PORT-AU-PRINCE	68	7	6	28	25	2	-
TABARRE	21	4	1	7	8	1	-
GRAND-GOAVE	-	-	-	-	-	-	-
GRESSIER	3	-	-	3	-	-	-
LEOGANE	13	1	3	4	5	-	-
PETIT-GOAVE	-	-	-	-	-	-	-

1.4.3. Type of Shelters within IDP Sites

The majority of open IDP sites are made of makeshift structures. Specifically, there are no transitional shelters (T-Shelters) in 84% of the sites, while about 11% have mixed structures that include tents, makeshift shelters and some T-Shelters.

The remaining 4% is mostly⁷ comprised of T-Shelters. In total, the 12 sites host 3,137 IDP households and 13,806 IDP individuals.

The 12 sites are:

- Radio Commerce in Cite Soleil;
- Santo 17, Corail Sector 3 and Corail Sector 4⁸, Union Centre d'Hébergement de Lilavois 42 in Croix-des-Bouquets;
- La voix des sans voix, Belle Alliance, Camp Rico, CSC in Leogane;
- Centre d'Hébergement de Galette Greffin, Tabarre Isa in Petion-Ville ;
- Village Eden in Tabarre.

Table G: IDP Sites by shelter composition, December 2013

T-Shelter Category	N	%
No T-Shelter (0 %)	228	84%
Mixed sites (1 - 90 %)	31	11%
T-Shelter sites (91 % more)	12	4%
Total	271	100

Of the mixed sites, there are 3 that are mostly comprised of T-Shelters. These are St Etienne 1 and St Etienne 2 in Tabarre and New Life Village in Croix des Bouquets.

⁵ For the purposes of analysis, DTM has grouped together all sites hosting 500 or more households and labeled them as larger sites. Note that this does not replace the definition set by the CCCM Cluster in 2010 where a large site is defined as hosting 1,000 or more households.

⁶ Large IDP sites are defined as those containing over 500 IDP households.

⁷ More than 90% of structures on site are T-Shelters.

⁸ The IDP population in the planned sites of Corail Sector 3 and 4 was updated with the results of the RPQA (building census) carried out in September 2013 by IOM and IHSI.

Table H: Number of empty shelters by commune, December 2013

Commune	N IDP sites	Total number of shelters	No. of empty shelters	Approximate percentage of empty shelters**
CARREFOUR	55	4,542	258	6%
CITE SOLEIL	21	1,862	63	3%
CROIX-DES-BOUQUETS	5	2,457	1	0%
DELMAS	57	10,621	130	1%
PETION-VILLE	28	1,883	60	3%
PORT-AU-PRINCE	68	7,163	434	6%
TABARRE	21	2,754	112	4%
GRAND-GOAVE	-	-	-	-
GRESSIER	3	169	3	2%
LEOGANE	13	1,242	142	11%
PETIT-GOAVE	-	-	-	-
Total	271	32,693	1,203	4%

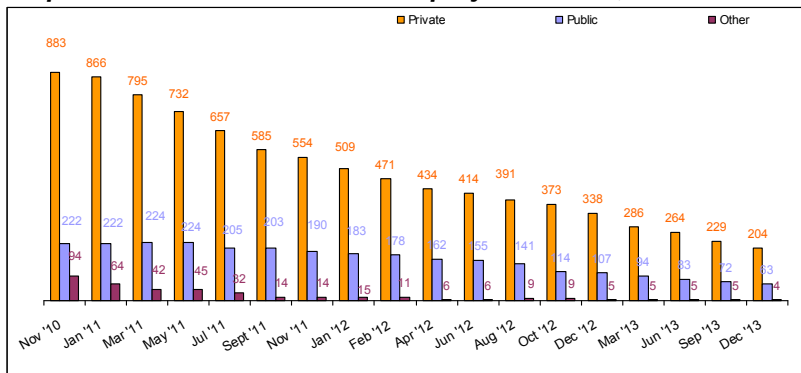
As mentioned above, movements in IDP sites are increasingly observed; this may happen due to boundaries between camps and communities becoming blurred in certain cases, and possibly to the availability of empty tents and space that allow families to split, new families to enter camps, or members joining relatives already living in camps. An approximate 1,203 tents or 4% of the total number of tents /makeshifts/shelters counted in IDP sites were found empty and still standing during this camp assessment⁹.

1.4.4. Public vs. private land¹⁰ hosting IDP sites

As of December 2013, and out of the 271 IDP sites open, there remain 204 IDP sites reportedly located on private land (75.3%) and 63 on public land (23.4%). Information on the remaining four sites was insufficient to categorize them.

Out of the 41 IDP sites closed in this reporting period, 33 were located on private land compared to 8 on public land.

Graph 8: IDP sites Land Ownership by commune, December 2013



The rate of decrease of number of sites on private land has been faster than the rate of decrease on public land.

From the initial 883 IDP sites located on private land, 25.9% are still open, whereas of the initial 222 IDP sites on public land 32.4% are still open.

1.4.5. Data on closed IDP sites¹¹

A total of 41 IDP sites have closed during this reporting period. This reflects an 11% decrease from the previous DTM round. Return programs offering rental subsidies are responsible for the closure of 38 IDP sites, and the rest closed as a result of spontaneous movement of the population out of the sites (i.e. “the IDPs decided to leave” as reported on the camp assessment form). One camp in Carrefour was closed due to eviction during this reporting period. However, there have been several cases of attempted evictions that were successfully mediated by protection actors.

⁹ Note that the number of tents does not equal the number of IDP households, as some tents/shelters are bigger and can house more than one IDP household.

¹⁰ It is important to emphasize that this information is gathered through interviews with the camp committee and/or IDP representatives on the site. No legal investigation on land tenure status was carried out.

¹¹ Please note that while 41 camps were closed during this period, 6 camps were reopened due following joint visits between IOM and partners, hence figures in Table B.

1.4.6. Location and size of closed sites

Almost 50% of the IDP sites closed in this round of DTM, or 20 out of 41, were located in Delmas. The second largest decrease was observed in Petion Ville, where 6 IDP sites closed. The regions also experienced the closure of 7 camps.

Table I: Distribution of IDP Sites that closed by commune and reason for closure between September and December 2013

Reason	CARREFOUR	CROIX-DES-BOUQUETS	DELMAS	GRAND-GOAVE	GRESSIER	LEOGANE	PETION-VILLE	PETIT-GOAVE	PORT-AU-PRINCE	TABARRE	Total Of sites	%
IDP's have been evicted	1										1	2.44%
IDP's moved out for other reason					1				1		2	4.88%
Return solution support		1	20	1	3	1	6	1	3	2	38	92.68%
Total	1	1	20	1	4	1	6	1	4	2	41	100%

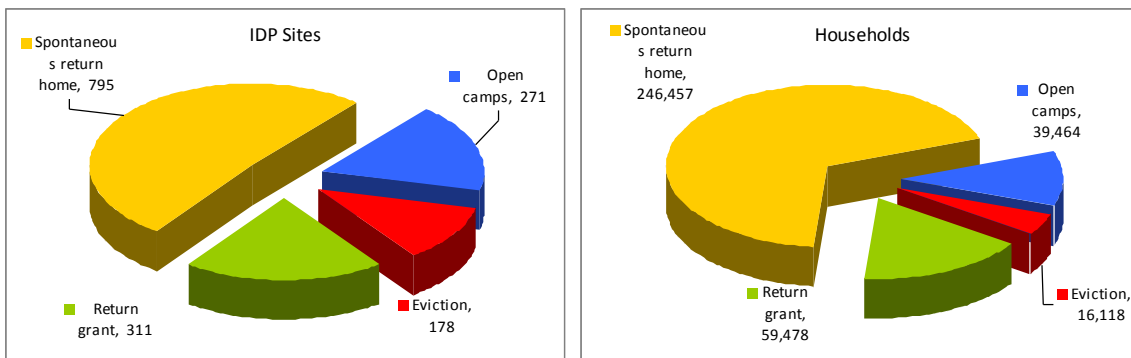
Out of the 41 IDP sites closed, 59% hosted less than 10 households, and only 2 had more than 100 households, one of which is Boliman Brant with more than 2,700 families.

Table J: Distribution of closed IDP Sites by commune and size of site between September and December 2013

N of IDP Households per IDP site	CARREFOUR	CROIX-DES-BOUQUETS	DELMAS	GRAND-GOAVE	GRESSIER	LEOGANE	PETION-VILLE	PETIT-GOAVE	PORT-AU-PRINCE	TABARRE	Total	%
1 - 9	1	1	14	0	3	1	4	0	0	0	24	59%
10 - 19	0	0	2	1	0	0	0	0	1	0	4	10%
20 - 99	0	0	3	0	1	0	1	1	3	2	11	27%
100 - 499	0	0	0	0	0	0	1	0	0	0	1	2%
500+	0	0	1	0	0	0	0	0	0	0	1	2%

2. CAMP CLOSURES SINCE 2010: EVICTIONS, RETURN AND RELOCATION, SPONTANEOUS RETURNS

Graph 9: Summary of number of IDP Sites and Households by status (open or closed and reason for closure), July 2010 to December 2013¹²



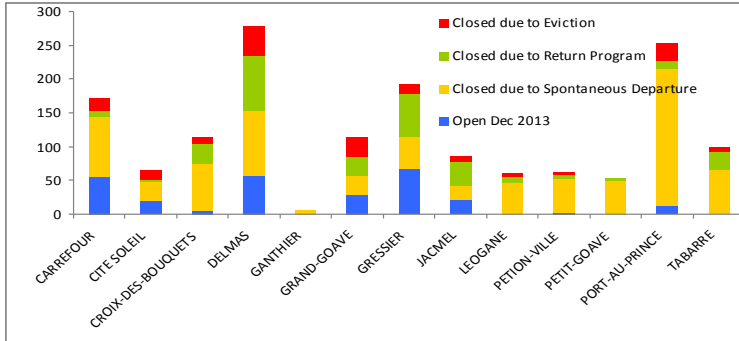
(* Return grants to IDP households in camps closed by rental subsidies and in camps under closure but still open (data available only for the past 9 months).

After the earthquake, 1,555 IDP sites and 361,517 households were identified.

As of December 2013, 311 IDP sites or 20% of the total 1,555 were closed through return programs offering rental subsidies and 11% due to forced evictions; 795 sites¹³ or 51% were closed due to spontaneous returns, leaving 20% still open. Almost 60,000 IDP households left IDP sites thanks to rental subsidy or other form of support (Shelter package or house reconstruction), while evictions affected approximately 16,000 IDP households over 3 years, or 4% of IDP households registered after the earthquake. The communes most affected by evictions have been Delmas, Petion-Ville, Carrefour, Port-au-Prince, and Leogane. Together they account for 74% of all evictions involving 12,861 households and 132 IDP sites of the 178 closed by forced evictions.

¹² Source: CCCM/Shelter cluster

Graph 10: Number of IDP Sites by commune and status (open or closed and reason for closure), July 2010 to December 2013



In the metropolitan area, return programs relocated the highest number of IDP households from IDP sites in the communes of Delmas, Port-au-Prince and Tabarre,

In the Palm Region and Jacmel, 57 IDP sites were closed thanks to return programs, offering support to 1,128 IDP households.

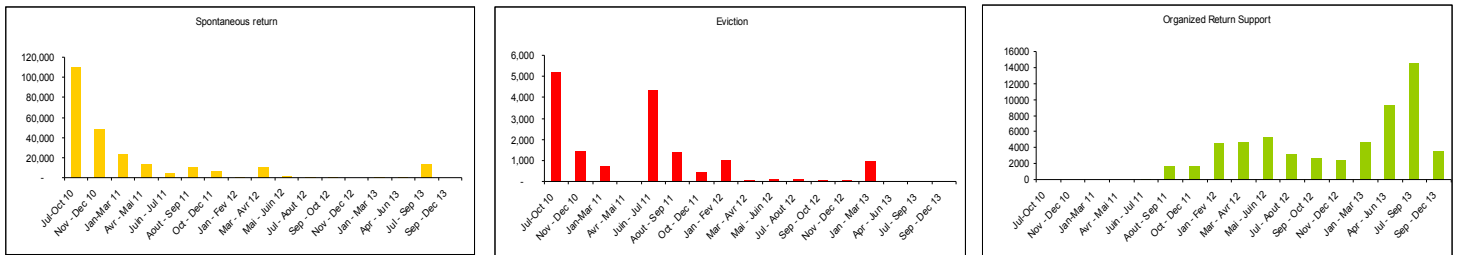
Graph 11 and 12 shows evictions, spontaneous returns and organized returns over time.

Evictions occurred mainly in 2010 and 2011, accounting for 41% and 43% of the evicted IDP households respectively, and they sharply decreased in 2012 (10%) and 2013 (6%). Two peaks are recorded, in mid 2010 and in mid 2011.

Most spontaneous returns occurred in 2010, when almost 160,000 IDP households left IDP sites to return to their homes voluntarily. In 2011 the number who left spontaneously decreased to fifty eight thousands and almost stopped in 2013, when only about 4,000 families left sites without support. The figure indicates that almost half of the displaced IDP households left IDP sites spontaneously and that this phenomenon is disappearing.

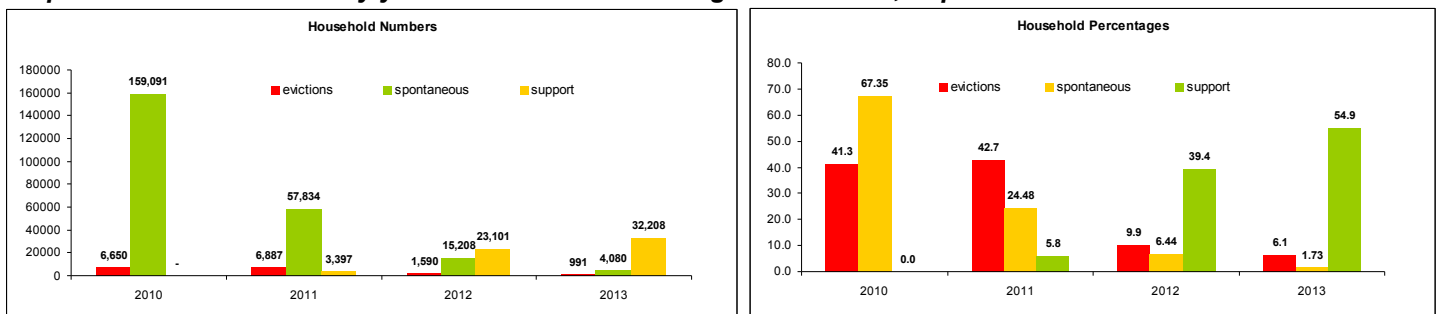
Return and relocation programs offering rental subsidies or house reconstruction started in mid-2011, reaching a peak between April and September 2013, when 40% of the households that received rental subsidies were assisted. Overall in 2013 the GOH and its partners delivered 55% of all returns assistance offered to IDPs to leave camps since the earthquake.

Graph 11: IDP households by period and reason for leaving the IDP sites, September to December 2013



Summary of 4 years of departure from IDP sites and camp-like settlements

Graph 12: IDP households by year and reason for leaving the IDP sites, September to December 2013



3. DTM METHODOLOGY

The Displacement Tracking Matrix (DTM) is a monitoring tool designed to track internally displaced persons (IDP) population movements and provide updated information on basic conditions in IDP sites and camp-like settlements in support of the Emergency Shelter and Camp Coordination and Camp Management (E-Shelter/CCCM) Cluster and other humanitarian and recovery actors in Haiti. The DTM is implemented by the International Organization for Migration (IOM), in partnership with the Government of Haiti (GoH) through the Directorate of Civil Protection (DPC in French).

Assessments are carried out on a tri-monthly basis across all identified IDP sites in the Port-au-Prince metropolitan area and the southern regions affected by the 12 January 2010 earthquake. The DTM has been utilized to monitor the population living in IDP sites since March 2010, and was revised (DTM v2.0) in October 2010 to meet the changing information needs as the displacement situation evolved.

This rapid camp-based assessment is implemented by a team of 20 staff. During a tri-monthly DTM cycle, assessments are conducted within a six week period which includes all activities, such as: data collection, verification, data-processing and analysis.

The DTM field teams use the DTM v2.0 IDP Site/Camp Information form for each assessment. The teams use various methods, including key respondent interviews with camp managers and camp committees, as well as observation and physical counting in order to collect relevant data to complete the form. The DTM also incorporates feedback from partners working in specific sites carrying out return programs. In cases where the site cannot be visited for security concerns, IOM uses aerial imagery to determine population estimates. IOM continues to use various data collection methods to ensure that the most updated information is available and the field teams approach each individual IDP site in a targeted manner, meaning that the method of data collection can vary depending on the situation in that specific IDP site.

After the data is gathered, consultation is carried out with actors that have a regular presence on the ground, namely, IOM Camp Management Operations (CMO) teams, representatives from the DPC, and other actors intervening in IDP sites. Google Earth, aerial imagery and other available technology is also used to assist in validating data points, such as location and area.

It is important to highlight that IDP individual caseload estimates provided through the DTM are taken from household –level assessments relying on information from representatives of each household.

The return data, or data on IDP households that received some form of support to leave camps, are gathered from both IOM's database and Cluster partners. The return programs include and are not limited to home improvements/repairs, retrofits to existing houses, relocation to rural towns and rental subsidies (presently the main form of support). IOM maintains a database that tracks information on relocated families from the moment IDPs find a suitable lodging that meets some agreed criteria (i.e. environmental risks, MTPTC ratings, access to water and sanitation facilities etc) to their actual relocation to the house of their choice, to the follow up visits done 8 weeks after the move, this constituting the final verification before completing the grant disbursement and closing the process.

For more information regarding the methodology utilized for the DTM, including the tools, please refer to the Displacement Tracking Matrix Strategy – Version 2.0, May 2011 document available at: <http://iomhaitidataportal.info>

All results from this report and from past periods are available on the DTM website: <http://iomhaitidataportal.info> The IOM Data Management Unit (DMU) continues to encourage data users to review the DTM methodology in order to effectively interpret the results presented in this report and other information products. Detailed information on methodology is available on the website listed above.

IOM continues to monitor, track and, where possible, responds to eviction cases as incidents are identified. Also IOM continues to request that updates on return activities be shared for inclusion in DTM. Please do not hesitate to email the DTM team at dtmhaiti@iom.int