



EMERGENCY TRACKING TOOL (ETT)

DTM Emergency Tracking Tool (ETT) is deployed to track and provide up-to-date information on sudden displacement and other population movements

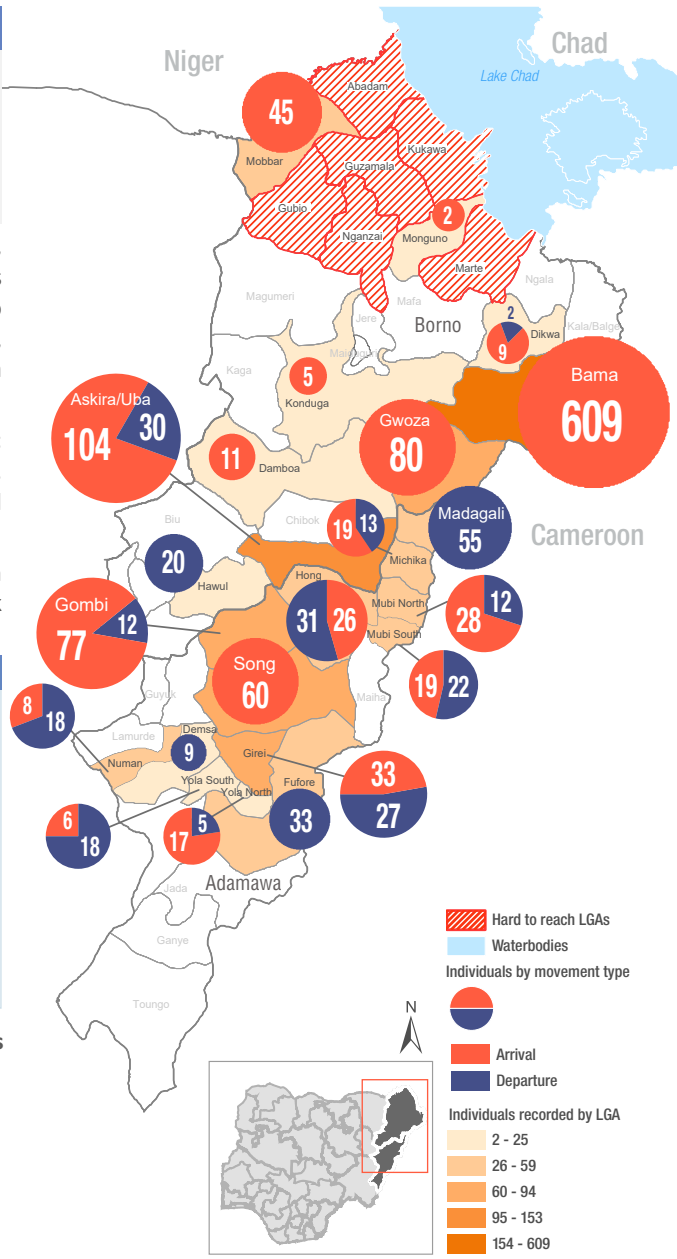
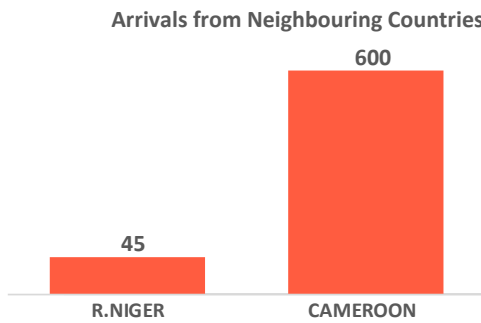
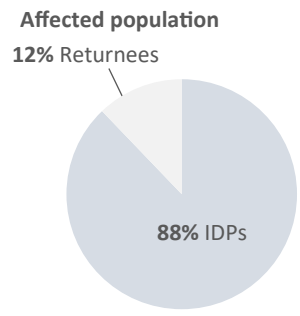
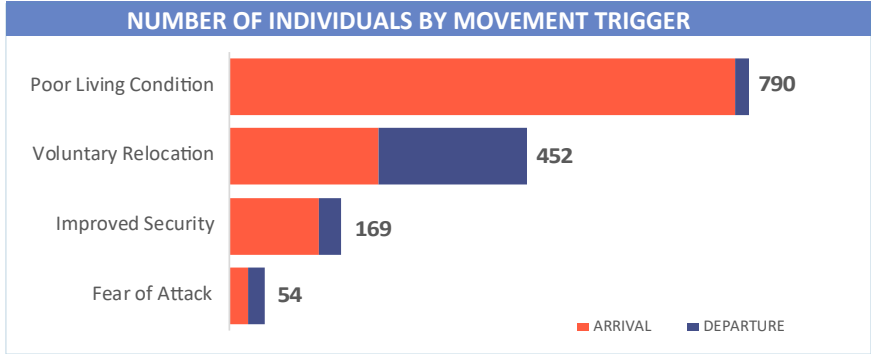
ETT Report: No. 167 | 13 - 19 April 2020

MOVEMENTS	NEW ARRIVAL SCREENING BY NUTRITION PARTNERS
<p>Arrivals: 1,158 individuals</p> <p>Departures: 307 individuals</p>	<p>118 Children (6-59 months) screened for malnutrition</p> <p>MUAC category of screened children</p> <p>Green: 109 Yellow: 7 Red: 2</p>

During the period of 13 - 19 April 2020, a total of 1,465 movements were recorded, composed of 1,158 arrivals and 307 departures. Arrivals were recorded at locations in Askira/Uba, Bama, Damboa, Dikwa, Gwoza, Konduga, Mobbar and Monguno Local Government Areas (LGAs) of Borno State. Arrivals were also recorded in Girei, Gombi, Hong, Michika, Mubi North, Mubi South, Numan, Song, Yola North and Yola South LGAs of Adamawa State.

Departures were recorded in Askira/Uba, Dikwa and Hawul LGAs of Borno State; Demsa, Fufore, Girei, Gombi, Hong, Madagali, Michika, Mubi North, Mubi South, Numan, Yola North and Yola South LGAs of Adamawa State also recorded departures.

ETT assessments identified the following movement triggers: poor living condition (53.9%), voluntary relocation (30.9%), improved security (11.5%) and fear of attack (3.7%).



* Movements in Kala/Balge were captured by ETT outreach staff in the LGA

SUMMARY OF MAJOR MOVEMENTS

- Bama:** 609 arrivals were recorded in Bama LGA of Borno state. The arrivals include 592 from Mayo-Sava ward in Cameroon due to poor living conditions and 17 from Shehuri/Hausari/Mairi ward of Bama LGA in Borno state relocated voluntarily.
- Askira/Uba:** 104 arrivals and 30 departures were recorded in Askira/Uba LGA of Borno State. The arrivals include 81 from Husara/Tampul ward of Askira/Uba LGA in Borno state and 23 from Gombi LGA of Adamawa state. Reported departures include 18 from Mubi North LGA, 7 from Girei LGA and 5 from Hong LGA in Adamawa state. 68% of the recorded movements were due to improved security, 19% due to fear of attack and 13% relocated voluntarily.
- Gombi:** 77 arrivals and 12 departures were recorded in Gombi LGA of Adamawa state. The arrivals include 39 from Madagali LGA, 17 from Mubi South LGA, 16 from Fufore LGA and 5 from Hong LGA in Adamawa state. Reported departures were from Askira/Uba LGA in Borno state. All recorded movements were voluntary relocations.
- Gwoza:** 80 arrivals were recorded in Gwoza LGA of Borno state. The arrivals include 50 from Jere LGA, 9 from Bama LGA, 6 from Maiduguri Metropolitan Council in Borno state, 7 from Girei LGA in Adamawa state and 8 from Marwa ward in Cameroon. All recorded movements were due to poor living conditions.

NEW ARRIVAL MALNUTRITION SCREENING SUMMARY (CHILDREN 6-59 MONTHS)

An exhaustive nutrition screening using mid upper arm circumference (MUAC) and Oedema for acute malnutrition was conducted by Nutrition Sector partners for 118 children of 6-59 months. Of the 118 children screened, the MUAC reading was 2 children (accessible areas) in the Red category, 7 were in the Yellow category and 109 were measured in the Green category. No case of Oedema was reported in the 3 LGAs that reports were received from.

The results include no children from neighbouring countries. All children found with acute malnutrition have been admitted in the treatment programme.

LGA	MUAC Categories						Total
	Green ($\geq 12.5\text{cm}$)		Yellow (11.5cm - 12.5cm)		Red ($< 11.5\text{cm}$)		
	Inaccessible	Accessible	Inaccessible	Accessible	Inaccessible	Accessible	
Bama	0	81	0	1	0	2	84
Gwoza	4	13	0	1	0	0	18
Mobbar	0	11	0	5	0	0	16
Total	4	105	0	7	0	2	118

■ Nourished

■ Moderate Acute Malnutrition (MAM)

■ Severe Acute Malnutrition (SAM)

Please note, the data presented are not surveillance results and should be interpreted with caution.

Table 1. Details of movements by locations of assessment and locations of arrival / departure - only movements with at least 10 persons are listed below

Tracking Location			Movement Location			ARRIVAL	DEPARTURE	Grand Total	
STATE	LGA	WARD	STATE	LGA	WARD				
ADAMAWA	FUFORE	PARIYA	ADAMAWA	GOMBI	GOMBI SOUTH	-	17	17	
	GIREI	DAKRI	ADAMAWA	FUFURE	FUFURE	18	-	18	
		GIREI I			PARIYA	15	-	15	
		WURO DOLE			GARKIDA	-	27	27	
	GOMBI	GARKIDA	ADAMAWA	MADAGALI	GULAK	39	-	39	
		GOMBI NORTH	ADAMAWA	MUBI SOUTH	GUDE	17	-	17	
		GOMBI SOUTH	ADAMAWA	BORNO	ASKIRA/UBA	DILLE / HUYUM	-	12	12
				FUFURE	PARIYA	16	-	16	
	HONG	BANGSHIKA	ADAMAWA	HONG	SONG	SONG WAJE	26	-	26
		HONG			MAYO LOPE	-	14	14	
		MAYO LOPE			BANGSHIKA	-	17	17	
	MADAGALI	BABEL	ADAMAWA	MADAGALI	MADAGALI	-	10	10	
		GULAK		HONG	GARAHA	-	39	39	
	MICHIKA	MICHIKA I	ADAMAWA	MAIHA	MAYONGULI	10	-	10	
		MINKISI/ WURO NGIKI		YOLA SOUTH	BOLE YOLDE PATE	-	13	13	
	MUBI NORTH	KOLERE	ADAMAWA	HONG	BANGSHIKA	-	12	12	
		MAYO BANI	BORNO	ASKIRA/UBA	WAMDEO / GIWI	18	-	18	
	MUBI SOUTH	GUDE	ADAMAWA	GOMBI	GOMBI NORTH	-	14	14	
		NASARAWO		SONG	DUMNE	16	-	16	
	NUMAN	SABON PEGI	ADAMAWA	NUMAN	IMBURU	-	13	13	
SONG	SIGIRE	ADAMAWA	GOMBI	TAWA	21	-	21		
	SONG GARI		SHELLENG	LIBBO	19	-	19		
	ZUMO		MAYO - BELWA	TOLA	20	-	20		
BORNO	ASKIRA/UBA	DILLE / HUYUM	ADAMAWA	GOMBI	GOMBI NORTH	10	-	10	
		NGOHI			GOMBI NORTH	13	-	13	
		WAMDEO / GIWI			MUBI NORTH	MAYO BANI	-	18	18
		ZADAWA / HAUSARI			BORNO	ASKIRA/UBA	HUSARA/TAMPUL	81	-
	BAMA	BUDUWA / BULA CHIRABE	BORNO	BAMA	SHEHURI / HAUSARI / MAIRI	17	-	17	
		SHEHURI / HAUSARI / MAIRI	CAMEROON	MAYO-SAVA	KOLOFATA	592	-	592	
	DAMBOA	DAMBOA	BORNO	MAIDUGURI	MAISANDARI	11	-	11	
	GWOZA	PULKA/BOKKO	BORNO	JERE	MAIRI	39	-	39	
	HAWUL	GWANZANG PUSDA	BORNO	DAMBOA	AZUR/MULTE/FORFOR	-	20	20	
	MOBBAR	DAMASAK	R.NIGER	DIFFA	SHETTIMARI	45	-	45	

The depiction and use of boundaries, geographic names, and related data shown on maps and included in this report are not warranted to be error free nor do they imply judgment on the legal status of any territory, or any endorsement or acceptance of such boundaries by IOM.

*MUAC data is provided by UNICEF

For more information or to report an alert, please contact:

Henry Kwenin, DTM Project Coordinator: hkwenin@iom.int | +234 903 8852 524

David Bercasio, Emergency Coordinator: dbercasio@iom.int | +234 907 5070 001

DTM information products: <http://nigeria.iom.int/dtm>

