

Displacement Tracking Matrix Monthly Factsheet April 2017



DTM OVERVIEW

The Displacement Tracking Matrix (DTM) is IOM's primary suite of tools used to track and monitor displacement and population mobility in over 40 countries around the world including Sudan. During the month of April 2017, IOM Sudan DTM teams conducted **seven** field missions to register and verify different caseloads of IDPs, returnees, refugees and affected host communities in the states of Central Darfur, North Darfur, South Darfur, South Kordofan and West Kordofan. A total of **85,492** individuals were registered during the conducted missions. Additionally, the DTM teams tracked more than **920** individuals arriving to different localities in South Kordofan state. All DTM activities are conducted in collaboration with the Humanitarian Aid Commission (HAC), the Area / Humanitarian Country Team (A/HCT) and partners on the ground.

22

DTM Missions

More than **70** sites visited / planned to be visited in these missions



7 completed

DTM teams completed seven registration missions in April, consisting of two missions in North Darfur, one in South Darfur, one in Central Darfur, one in South Kordofan, and two in West Kordofan. **31 sites visited by the seven missions.**



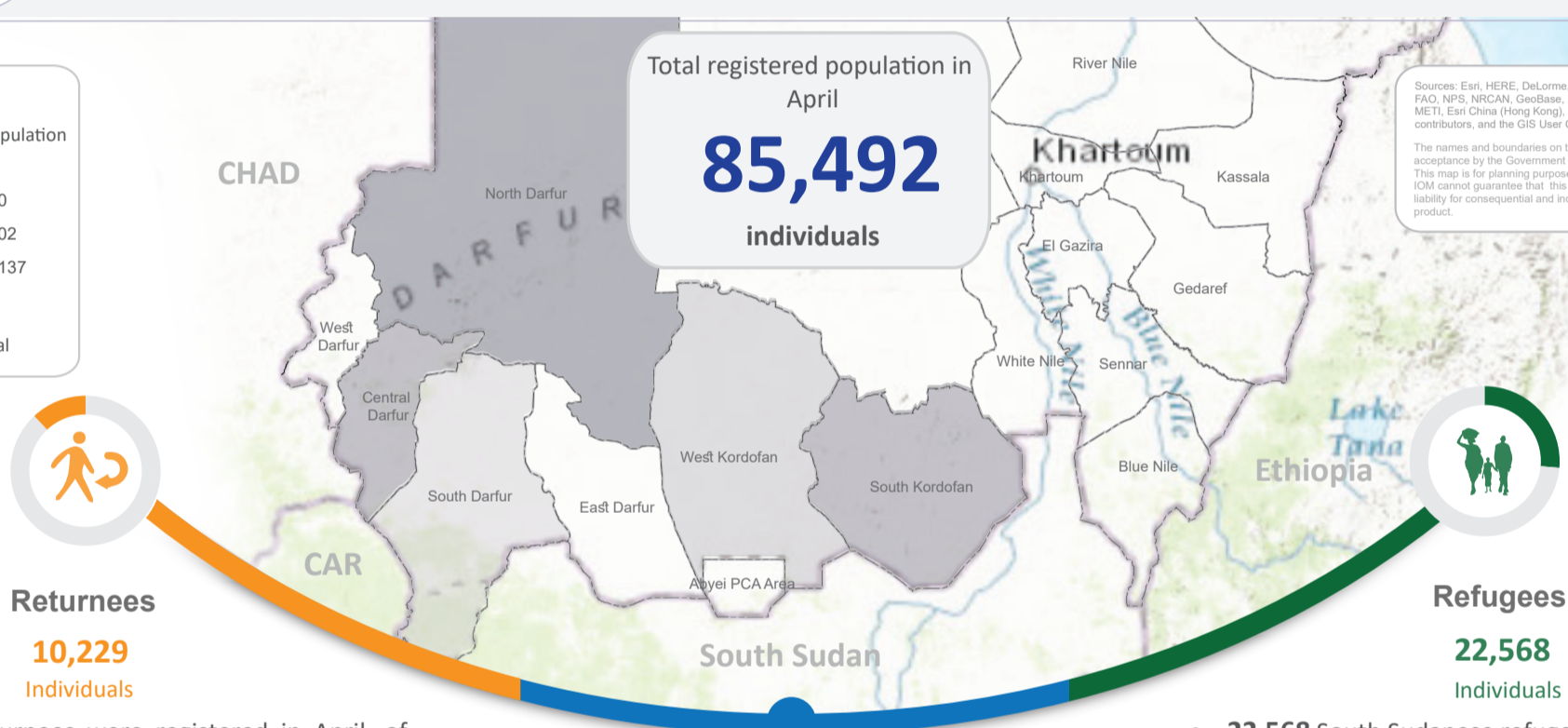
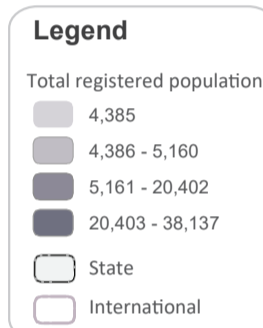
2 on-going

Two DTM teams are currently deployed in the field, jointly with HAC, registering an old caseload of IDPs in Thor, Central Darfur, and South Sudanese refugees (old and new caseloads) in El Mujlad, West Kordofan. **22 sites will be visited by the two missions.**



12 Planned

Twelve missions are initially planned for May, consisting of seven missions in West Kordofan, one in South Kordofan, one in North Darfur, two in South Darfur, and one in Central Darfur. **More than 20 sites to be visited by the planned missions.**



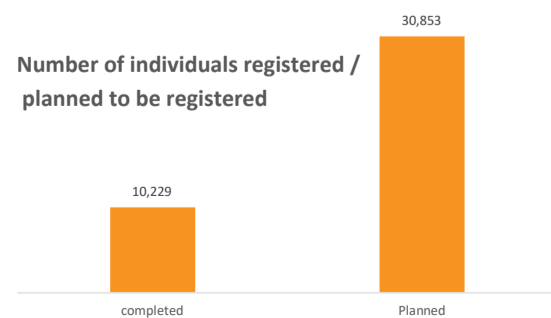
Sources: Esri, HERE, DeLorme, Intermap, increment P Corp., GEBCO, USGS, FAO, NPS, NRCAN, GeoBase, IGN, Kadaster NL, Ordnance Survey, Esri Japan, METI, Esri China (Hong Kong), Swisstopo, MapmyIndia, © OpenStreetMap contributors, and the GIS User Community

The names and boundaries on this map do not imply official endorsement or acceptance by the Government of Sudan or IOM. This map is for planning purposes only. IOM cannot guarantee that this map is error free and therefore we accept no liability for consequential and indirect damages arising from the use of this map product.



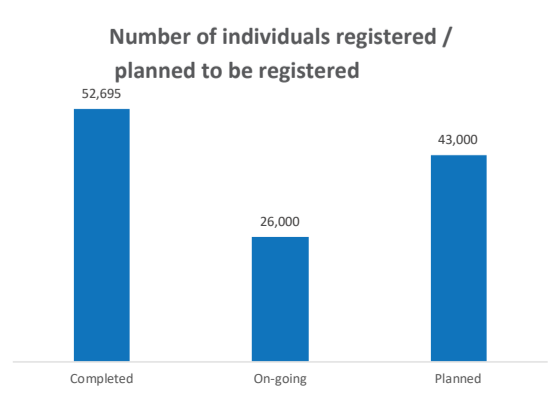
Returns
10,229
Individuals

- **10,229** returnees were registered in April, of which **4,385** were registered in Otash village, South Darfur and **5,844** returnees were registered in nine localities in North Darfur State (cumulative).
- Most of the returnees in Otash village, South Darfur, had returned from Otash camp; whereas returnees in North Darfur had returned either from Chad or from various other locations within North Darfur.
- The registered returnees identified their return as permanent and indicated that they do not plan to go back to their areas of displacement.
- During IOM's NFI missions in Central Darfur, new returnee arrivals were reported (estimated at **2,100** households) in different locations of Um Dukhun locality. Further information will be shared with the RRR sector in order to conduct a verification / key finding mission to verify their status, identify their needs and to register them.



52,695
Individuals

- **52,695** IDPs were registered in April, of which 85% were from the old caseload who were displaced during 2016 from Jebel Marra.
- From the old caseload, **24,613** IDPs were registered in Tawilla locality, North Darfur and **20,402** IDPs were registered in Nertiti locality, Central Darfur.
- **7,685** new IDPs (displaced in 2017) were registered in April in Alliet locality, North Darfur.
- No new displacements were reported in April, 2017.



Refugees
22,568
Individuals

- **22,568** South Sudanese refugees were registered in April, of which **77%** were registered in South Kordofan, while the rest were registered in West Kordofan.
- All South Sudanese refugees registered / tracked in South Kordofan arrived during the first few months of 2017, whereas the caseload in West Kordofan comprised of both old and new arrivals.
- The registration exercises of South Sudanese refugees covered caseloads located in three localities in South Kordofan, and two localities in West Kordofan.



Notes

- The above figures may slightly change after processing the data to the database.
- Details on the registered population (demographic data, vulnerability, place of origin, etc.) and beneficiary lists are available upon request.
- Mission reports and statistical summaries on all DTM missions are available upon request.