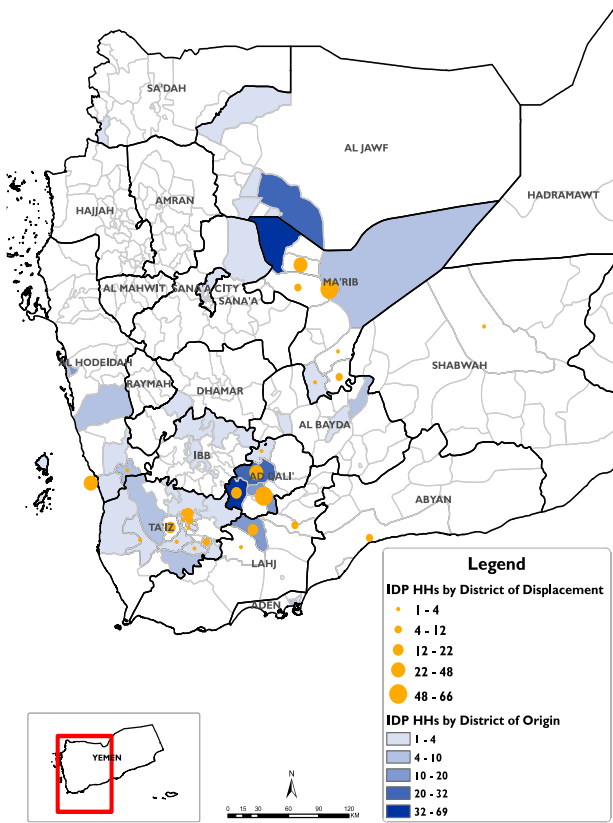


# RAPID DISPLACEMENT TRACKING (RDT)

Reporting Period : 12 - 18 Apr 2020

Published on: 19 April 2020

## Displaced Households by District of Displacement and Origin



\*Based on data collected during 12 - 18 Apr, 2020

## Number of Displaced Households (IDP HHs) per Governorate

Governorate	IDP HH Displaced during the week	IDP HH who left displaced location within the week	Total IDP HH
	12 to 18 Apr		01 Jan to 18 Apr
Hajjah	N/A	N/A	N/A
Al Dhale'e	130	4	952
Al Hudaydah	37	7	795
Taizz	76	0	1,024
Amanat Al Asimah	N/A	N/A	N/A
Ibb	N/A	N/A	N/A
Marib	131	0	7,767
Amran	N/A	N/A	N/A
Sana'a	N/A	N/A	N/A
Shabwah	2	0	89
Lahj	25	0	74
Aden	0	0	12
Sa'ada	N/A	N/A	N/A
Abyan	6	2	40
Dhamar	N/A	N/A	N/A
Hadramaut	3	0	789
Al Bayda	N/A	N/A	N/A
Al Jawf	0	0	211
Raymah	N/A	N/A	N/A
Al Mahwit	N/A	N/A	N/A
Socotra	0	0	0
Al Maharah	3	0	131
<b>Total</b>	<b>413</b>	<b>13</b>	<b>11,884</b>

### DISPLACEMENT TRACKING

DTM's Rapid Displacement Tracking (RDT) tool collects and reports on numbers of households forced to flee on a daily basis, allowing for regular reporting of new displacements in terms of numbers, geography and needs. In the first nine months of 2019, conflict has resulted in new patterns of displacement, particularly in within Hajjah, Al Hudaydah, Al Dhale'e, Taizz governorates.

### WEEKLY UPDATE

Between 12 and 18 April, newly displaced households were recorded in Marib (131 HH), Al Dhale'e (130 HH), and Taiz (76 HH). Most of these displacements were the result of increased fighting in Al Dhale'e (121 HH), Marib (97 HH), and Hudaydah (51 HH).

### IDP HH WHO LEFT DISPLACED LOCATIONS

13 IDP households left their location of displacement and moved either to their place of origin or to some other displaced location.

\*Reported during 12 - 18 Apr, 2020



### Displaced People

11,884 Households  
71,304 Individuals

\*Reported during Jan 01- Apr 18, 2020

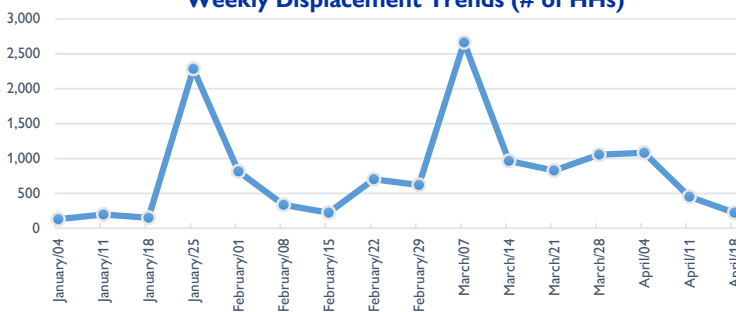


### Returned People

500 Households  
3,000 Individuals

\*Reported during Jan 01- Apr 18, 2020

### Weekly Displacement Trends (# of HHs)



### IDPs Shelter Types (within reporting period)

- With Host Families who are Relatives (no rental fee)
- In Isolated/dispersed settlements (detached from a location)
- In Rented Accommodation
- In Settlements (Grouped of Families) Urban and Rural
- With Host Families who are not Relatives (no rental fee)

