

# EMERGENCY TRACKING TOOL (ETT)

DTM Emergency Tracking Tool (ETT) is deployed to track and provide up-to-date information on sudden displacement and other population movements

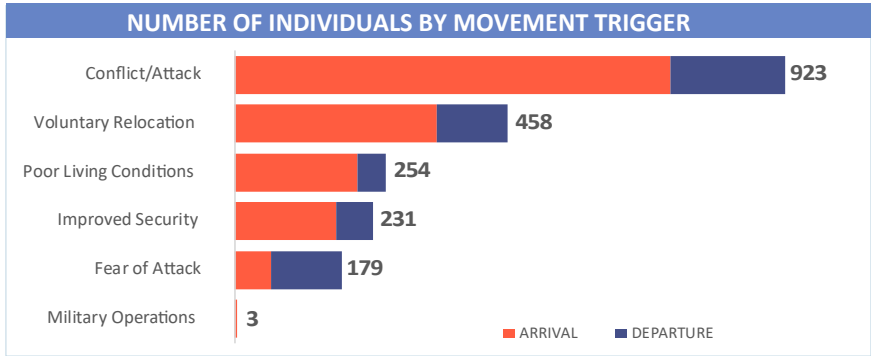
## ETT Report: No. 166 | 6 - 12 April 2020

MOVEMENTS	NEW ARRIVAL SCREENING BY NUTRITION PARTNERS
<p><b>Arrivals:</b> 1,506 individuals</p> <p><b>Departures:</b> 542 individuals</p>	<p><b>67</b> Children (6-59 months) screened for malnutrition</p> <p><b>MUAC category of screened children</b></p> <p>Green: 60    Yellow: 6    Red: 1</p>

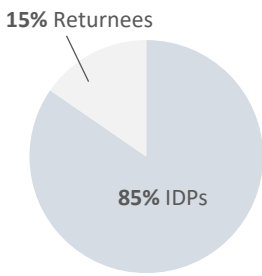
During the period of 6 - 12 April 2020, a total of 2,048 movements were recorded, composed of 1,506 arrivals and 542 departures. Arrivals were recorded at locations in Askira/Uba, Bama, Biu, Dikwa, Gwoza, Hawul, Mobbar and Ngala Local Government Areas (LGAs) of Borno State. Arrivals were also recorded in Demsa, Fufore, Girei, Gombi, Hong, Maiha, Michika, Mubi North, Mubi South, Numan, Song, Yola North and Yola South LGAs of Adamawa State.

Departures were recorded in Askira/Uba and Dikwa LGAs of Borno State; Fufore, Girei, Hong, Madagali, Maiha, Michika, Mubi North, Numan, Song and Yola South LGAs of Adamawa State also recorded departures.

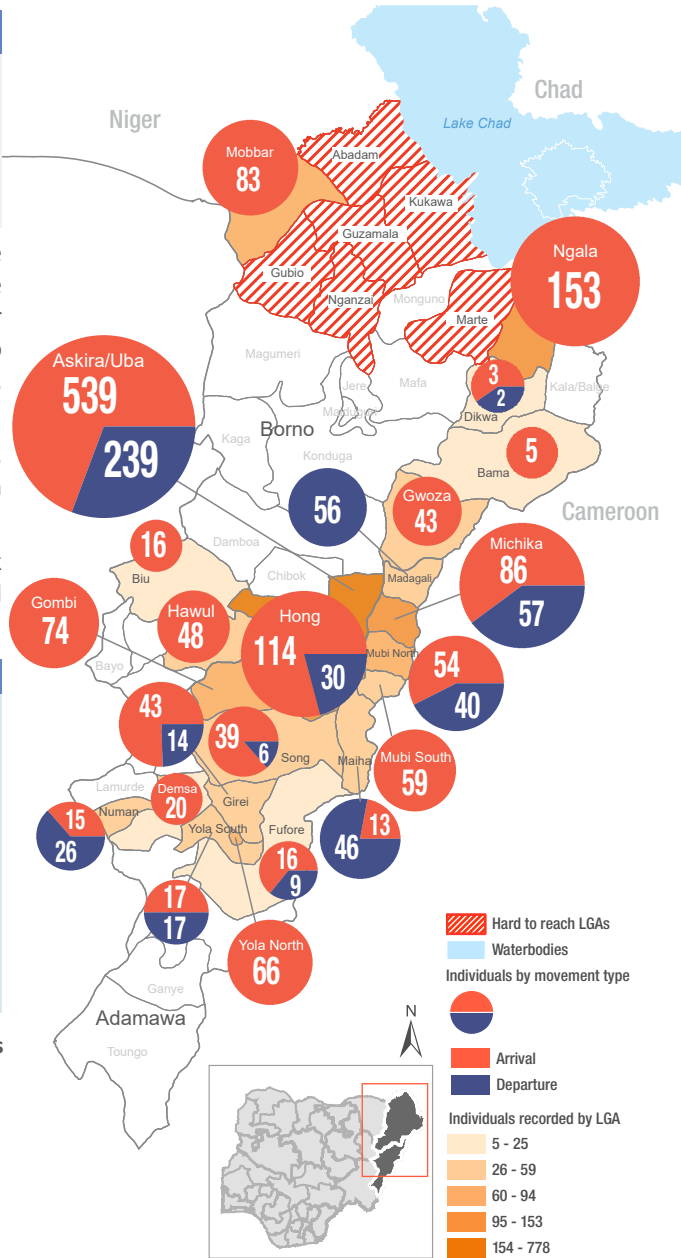
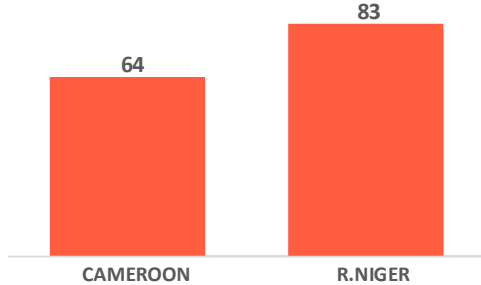
ETT assessments identified the following movement triggers: conflict/attack (45.1%), voluntary relocation (22.4%), poor living condition (12.4%), improved security (11.3%), fear of attack (8.7%) and military operations (0.1%).



### Affected population



### Arrivals from Neighbouring Countries



\* Movements in Kala/Balge were captured by ETT outreach staff in the LGA

## SUMMARY OF MAJOR MOVEMENTS

**Askira/Uba:** 539 arrivals and 239 departures were recorded in Askira/Uba LGA of Borno state. The arrivals include 536 from Mussa, Giwi/Wamdeo and Chul/Rumirgo wards of Askira/Uba LGA and 3 from Maiha LGA in Adamawa State. Reported departures include 19 from Askira/Uba LGA in Borno state, 73 from Hong LGA, 68 from Mubi South, 36 from Yola North, 13 from Gombi, 13 from Hong and 17 from Girei LGA of Adamawa state. 94% of the movements were due to conflict/attack, 4% due to fear of attack and 2% were voluntary relocations.

**Ngala:** 153 arrivals were recorded in Ngala LGA of Borno State. The arrivals include 98 from Kala/Balge LGA in Borno state due to poor living conditions and 55 from Logone-et-chari of Far North Region in Cameroon relocated voluntarily.

**Hong:** 114 arrivals and 30 departures were recorded in Hong LGA of Adamawa state. 101 of the arrivals were from Askira/Uba in Borno state while 13 from Hong LGA in Adamawa state. Reported departures were from Kwarhi and Daksiri wards of Hong LGA in Adamawa state. 51% of the recorded movements were due to conflict/attack, 19% due to fear of attack, 15% due to improved security and 15% voluntary relocation.

**Michika:** 86 arrivals and 57 departures were recorded in Michika LGA of Adamawa state. The arrivals include 17 from Mubi North LGA, 44 from Bazza Margi ward and 25 Sukumu/Tillijo ward of Michika LGA in Adamawa state. All recorded departures were from Bazza Margi ward of Michika LGA in Adamawa state. 60% of the movements were due to improved security and 40% due to fear of attack.

## NEW ARRIVAL MALNUTRITION SCREENING SUMMARY (CHILDREN 6-59 MONTHS)

An exhaustive nutrition screening using mid upper arm circumference (MUAC) and Oedema for acute malnutrition was conducted by Nutrition Sector partners for 67 children of 6-59 months. Of the 67 children screened, the MUAC reading was 1 child (accessible areas) in the Red category, 6 were in the Yellow category and 60 were measured in the Green category. No case of Oedema was reported in the 3 LGAs that reports were received from.

The results include no children from neighbouring countries. All children found with acute malnutrition have been admitted in the treatment programme.

LGA	MUAC Categories						Total
	Green (>12.5cm)		Yellow (11.5cm - 12.5cm)		Red (<11.5cm)		
	Inaccessible	Accessible	Inaccessible	Accessible	Inaccessible	Accessible	
Gwoza	7	2	0	0	0	0	9
Mobbar	0	20	0	2	0	0	22
Ngala	0	31	0	4	0	1	36
<b>Total</b>	<b>7</b>	<b>53</b>	<b>0</b>	<b>6</b>	<b>0</b>	<b>1</b>	<b>67</b>

■ Nourished

■ Moderate Acute Malnutrition (MAM)

■ Severe Acute Malnutrition (SAM)

Please note, the data presented are not surveillance results and should be interpreted with caution.

**Table 1. Details of movements by locations of assessment and locations of arrival / departure - only movements with at least 15 persons are listed below**

STATE	Tracking Location		Movement Location			ARRIVAL	DEPARTURE	Grand Total
	LGA	WARD	STATE2	LGA2	WARD2			
ADAMAWA	GIREI	GIREI I	ADAMAWA	FUFURE	PARIYA	43	-	43
	GOMBI	GARKIDA	ADAMAWA	HONG	KWARHI	21	-	21
				MAIHA	MAIHA GARI	24	-	24
				NUMAN	NUMAN I	16	-	16
	HONG	BANGSHIKA	ADAMAWA	HONG	DAKSIRI	-	21	21
		UBA	BORNO	ASKIRA/UBA	CHUL / RUMIRGO	101	-	101
	MADAGALI	DUHU/SHUWA	ADAMAWA	MUBI SOUTH	NASSARAWO	-	30	30
		K/WUROGAYANDI	ADAMAWA	MUBI NORTH	MAYO BANI	-	26	26
	MAIHA	BELEL	ADAMAWA	SONG	DUMNE	-	16	16
		MAIHA GARI	ADAMAWA	GOMBI	GARKIDA	-	21	21
	MICHIKA	JIGALAMBU	ADAMAWA	MUBI NORTH	KOLERE	17	-	17
		MICHIKA II		BAZZA MARGI	44	57	101	
		MINKISI/ WURO NGIKI		SUKUMU / TILLIJO	25	-	25	
	MUBI NORTH	DIGIL	BORNO	GWOZA	GWOZA TOWN GADAMAYO	-	19	19
		LOKUWA		ASKIRA/UBA	CHUL / RUMIRGO	28	-	28
		MAYO BANI		ADAMAWA	MADAGALI	K/WUROGAYNDI	26	-
MUBI SOUTH	LAMORDE	BORNO	ASKIRA/UBA	CHUL / RUMIRGO	40	-	40	
	NASARAWO	ADAMAWA	MADAGALI	DUHU/SHUWA	19	-	19	
	SONG	ADAMAWA	MUBI NORTH	MAYO BANI	16	-	16	
YOLA NORTH	DOUBELI	TARABA	YORRO	PANTISAWA I	23	-	23	
		BORNO	ASKIRA/UBA	CHUL / RUMIRGO	56	-	56	
BORNO	ASKIRA/UBA	CHUL / RUMIRGO	BORNO	HONG	UBA	-	73	73
			ADAMAWA	MUBI SOUTH	LAMORDE	-	68	68
			BORNO	YOLA NORTH	DOUBELI	-	36	36
			BORNO	ASKIRA/UBA	MUSSA	46	-	46
			BORNO	ASKIRA/UBA	UVU/UDA	-	19	19
			BORNO	ASKIRA/UBA	CHUL / RUMIRGO	50	-	50
	UBA	WAMDEO / GIWI	BORNO	ASKIRA/UBA	WAMDEO / GIWI	184	-	184
			BORNO	ASKIRA/UBA	MUSSA	71	-	71
			ADAMAWA	GIREI	MODIRE/VINIKILAN	-	17	17
	BIU	DUGJA	BORNO	ASKIRA/UBA	MUSSA	185	-	185
			BORNO	DAMBOA	DAMBOA	16	-	16
			BORNO	BAMA	SABSABWA/SOYE/BULONGU	24	-	24
HAWUL	PUBA/VIDAU/LOKOJA	ADAMAWA	YOLA SOUTH	NASSARAWO	34	-	34	
MOBBAR	DAMASAK	R.NIGER	DIFFA	SHETTIMARI	83	-	83	
NGALA	NGALA WARD	BORNO	KALA/BALGE	RANN "A"	98	-	98	
		CAMEROON	LOGONE-ET-CHARI	HILE-ALIFA	55	-	55	

The depiction and use of boundaries, geographic names, and related data shown on maps and included in this report are not warranted to be error free nor do they imply judgment on the legal status of any territory, or any endorsement or acceptance of such boundaries by IOM.

\*MUAC data is provided by UNICEF

For more information or to report an alert, please contact:

Henry Kwenin, DTM Project Coordinator: [hkwenin@iom.int](mailto:hkwenin@iom.int) | +234 903 8852 524

Dave Bercasio, Emergency Coordinator: [dbercasio@iom.int](mailto:dbercasio@iom.int) | +234 907 5070 001

DTM information products: <http://nigeria.iom.int/dtm>

