

# EMERGENCY TRACKING TOOL (ETT)

DTM Emergency Tracking Tool (ETT) is deployed to track and provide up-to-date information on sudden displacement and other population movements

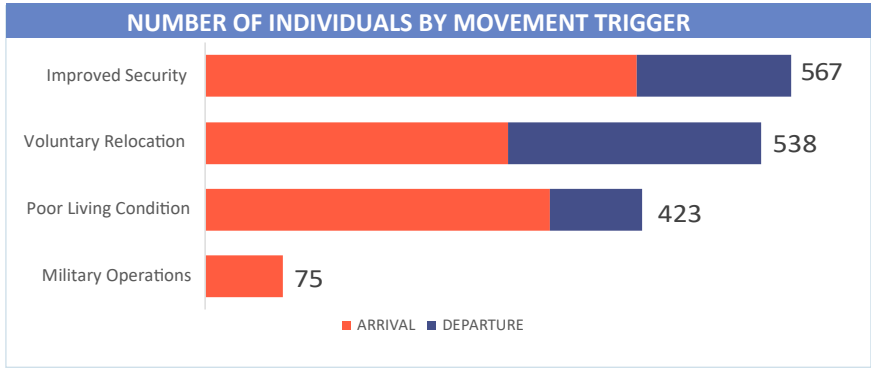
## ETT Report: No. 165 | 30 March - 5 April 2020

MOVEMENTS	NEW ARRIVAL SCREENING BY NUTRITION PARTNERS
<p><b>Arrivals:</b> 1120 individuals</p> <p><b>Departures:</b> 483 individuals</p>	<p><b>156</b> Children (6-59 months) screened for malnutrition</p> <p><b>MUAC category of screened children</b></p> <p>Green: 146    Yellow: 7    Red: 3</p>

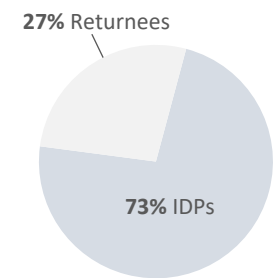
During the period of 30 March - 5 April 2020, a total of 1,603 movements were recorded, composed of 1,120 arrivals and 483 departures. Arrivals were recorded at locations in Askira/Uba, Bama, Dikwa, Gwoza, Maiduguri Metropolitan Council, Mobbar, Monguno and Ngala Local Government Areas (LGAs) of Borno State; Fufore, Girei, Gombi, Hong, Madagali, Maiha, Michika, Mubi North, Mubi South, Numan, Song, Yola South, and Yola North LGAs of Adamawa State also recorded arrivals.

Departures were recorded in Askira/Uba, Dikwa, and Kala/Balge LGAs of Borno State; Fufore, Hong, Madagali, Maiha, Michika, Mubi North, Mubi South, Numan, Song, and Yola North LGAs of Adamawa State also recorded departures.

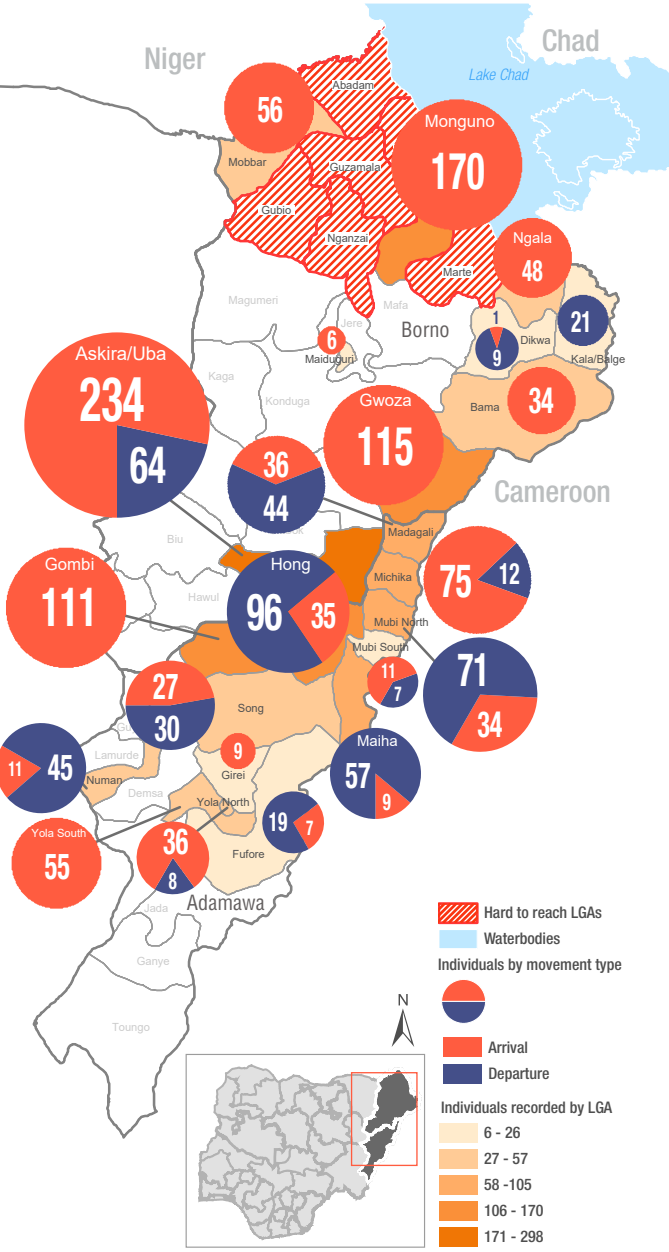
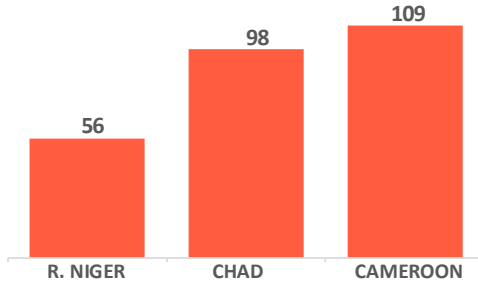
ETT assessments identified the following movement triggers: improved security (35%), voluntary relocation (34%), poor living condition (26%) and military operations (5%).



### Affected population



### Arrivals from Neighbouring Countries



## SUMMARY OF MAJOR MOVEMENTS

**Askira/Uba:** 234 arrivals and 64 departures were recorded in Askira/Uba LGA of Borno State. The arrivals include 105 from Hong and Yola South LGAs of Adamawa State, 21 from Jalingo LGA of Taraba State, 8 from Damboa LGA, and 100 from Husara/Tampul and Wamdeo/Giwi wards of Askira/Uba LGA. 18 reported departures were from Gombi LGA in Adamawa State, 10 from Chibok and 36 from Gwoza LGAs of Borno State. 73% of the movements recorded were due to improved security, 24% were voluntary relocations and 3% due to poor living conditions.

**Monguno:** 170 arrivals were recorded in Monguno LGA of Borno State. 72 arrived from Kukawa LGA in Borno State due to military operations and 98 from Chad Republic which were all voluntary relocations.

**Hong:** 35 arrivals and 96 departures were recorded in Hong LGA of Adamawa State. 14 arrivals were recorded from Maiha LGA in Adamawa State while 21 from Askira/Uba LGA in Borno State. The departures were recorded from Askira/Uba LGA. All movements recorded in Hong were due to improved security.

**Gwoza:** 115 arrivals were recorded in Gwoza LGA of Borno State. Of which 5 individuals were from Abuja Municipal, 56 from Pulka/Bokko and Kirawa/Jimini wards in Gwoza LGA, 19 from Cameroon and 24 from Bali LGA in Taraba State. 80% of the recorded movements were due to poor living conditions, 10% due to improved security and 10% were voluntary relocations.

## NEW ARRIVAL MALNUTRITION SCREENING SUMMARY (CHILDREN 6-59 MONTHS)

An exhaustive nutrition screening using monitoring of symptoms of acute malnutrition mid upper arm circumference (MUAC) and Oedema was conducted by Nutrition Sector partners for 156 children of 6-59 months. Of the 156 children screened, the MUAC reading was: 3 children (2 from inaccessible and 1 from accessible areas) in the Red category, 7 in the Yellow category and 146 measured in the Green category. No cases of Oedema were reported in the 4 LGAs that reports were received from.

The results also include 56 children from neighbouring Cameroon, Chad, and Republic of Niger. Of these arrivals, 10 children moved to Bama, 13 to Gwoza, 17 to Mobbar and 16 to Ngala; 1 of the 56 arrivals were screened into the Red category, 51 in the Green category and 4 in the Yellow category. All children found with acute malnutrition have been admitted for treatment.

LGA	MUAC Categories						Total
	Green ( $\geq 12.5\text{cm}$ )		Yellow (11.5 cm - 12.5cm)		Red ( $< 11.5\text{cm}$ )		
	Inaccessible	Accessible	Inaccessible	Accessible	Inaccessible	Accessible	
Bama	72	11	1	1	2	0	87
Gwoza	6	28	0	2	0	0	36
Mobbar	0	15	0	2	0	0	17
Ngala	0	14	0	1	0	1	16
<b>Total</b>	<b>78</b>	<b>68</b>	<b>1</b>	<b>6</b>	<b>2</b>	<b>1</b>	<b>156</b>

■ Nourished

■ Moderate Acute Malnutrition (MAM)

■ Severe Acute Malnutrition (SAM)

Please note, the data presented are not surveillance results and should be interpreted with caution.

**Table 1. Details of movements by locations of assessment and locations of arrival / departure - only movements with at least 15 persons are listed below**

Tracking Location			Movement Location			ARRIVAL	DEPARTURE	Grand Total
STATE	LGA	WARD	STATE	LGA	WARD			
ADAMAWA	GOMBI	GOMBI SOUTH	ADAMAWA	HONG	BANGSHIKA	23	-	23
				GAYA	18	-	18	
		MUBI NORTH		VIMTIM	15	-	15	
		GARKIDA		YOLA SOUTH	NAMTARI	41	-	41
	HONG	BANGSHIKA	ADAMAWA	MAIHA	MANJEKIN	14	-	14
		DAKSIRI	BORNO	ASKIRA/UBA	CHUL/RUMIRGO	21	-	21
		GARAHA			ZADAWA/HAUSARI	-	63	63
	HILDI	CHUL/RUMIRGO	-	33	33			
	MADAGALI	DUHU/SHUWA	ADAMAWA	MAIHA	MAYONGULI	16	-	16
	MAIHA	MAYONGULI	ADAMAWA	MUBI NORTH	LOKUWA	-	28	28
				MADAGALI	DUHU/SHUWA	-	16	16
	MICHIKA	MICHIKA I	ADAMAWA	MUBI SOUTH	LAMORDE	-	17	17
		MINKISI/WURO NGIKI		HONG	HILDI	15	-	15
		SINA/KAMALE/KWANDE		MUBI NORTH	BETSO	23	-	23
	MUBI NORTH	BETSO	ADAMAWA	MICHIKA	MICHIKA II	17	-	17
		KOLERE		MICHIKA	MINKISI/WURO NGIKI	-	23	23
		LOKUWA		HONG	BANGSHIKA	-	18	18
		VIMTIM		MADAGALI	DUHU/SHUWA	28	-	28
NUMAN	NUMAN I	ADAMAWA	GOMBI	GOMBI SOUTH	-	15	15	
SONG	ZUMO	ADAMAWA	DEMSA	NASSARAWO	-	17	17	
BORNO	ASKIRA/UBA	CHUL/RUMIRGO	ADAMAWA	HONG	HILDI	33	-	33
		LASSA	BORNO	ASKIRA/UBA	WAMDEO/GIWI	89	-	89
		NGULDE	TARABA	JALINGO	KONA	21	-	21
		UBA	ADAMAWA	GOMBI	GARKIDA	-	18	18
		ZADAWA/HAUSARI	BORNO	GWOZA	BITA/IZGE	-	36	36
	BAMA	BUDUWA/BULA CHIRABE	BORNO	JERE	BALE GALTIMARI	13	-	13
			CAMEROON	MAYO-SAVA	MORA	21	-	21
	GWOZA	PULKA/BOKKO	BORNO	GWOZA	KIRAWA/JIMINI	46	-	46
			TARABA	BALI	MAIHULA	24	-	24
	KALA/BALGE	RANN "A"	CAMEROON	LOGONE-ET-CHARI	MAKARY	-	21	21
	MOBBAR	DAMASAK	REPUBLIC OF NIGER	DIFFA	SHETTIMARI	56	-	56
	MONGUNO	MONGUNO	BORNO	KUKAWA	KUKAWA	72	-	72
			CHAD	MAMDI	BOL	93	-	93
NGALA	NGALA WARD	CAMEROON	LOGONE-ET-CHARI	FOTOKOL	48	-	48	

The depiction and use of boundaries, geographic names, and related data shown on maps and included in this report are not warranted to be error free nor do they imply judgment on the legal status of any territory, or any endorsement or acceptance of such boundaries by IOM. \*MUAC data is provided by UNICEF

For more information or to report an alert, please contact:

Henry Kwenin, DTM Project Coordinator: [hkwenin@iom.int](mailto:hkwenin@iom.int) | +234 903 8852 524

Dave Bercasio, Emergency Coordinator: [dbercasio@iom.int](mailto:dbercasio@iom.int) | +234 907 5070 001

DTM information products: <http://nigeria.iom.int/dtm>