

Overall returnees through **Torkham and Chaman** since January 2020 **1,920**

For this reporting period **36** interviews were conducted comprising of the following categories

- 80.6%** *Undocumented families
- 19.4%** *Undocumented individuals travelling with documented families
- 0%** *Undocumented individuals travelling alone

* Interviews were conducted at both transit points, Torkham and Chaman/Spin Boldak

- 87%** Individuals with no documents
Afghans who do not have any legal document (POR, ACC, VISA)
- 1%** Individuals with ACC
Individuals with Afghan Citizen Card (ACC)
- 11%** Individuals with Tazkira
Afghan ID card that comes under the Undocumented Afghans category
- 0%** Individuals with ACC Token
Individuals who received token to obtain ACC
- 0%** Individuals with Expired POR Card
Proof of Registration (POR) cards that have expired before 2015
- 1%** Individuals with no Passport or Expired Visa
Afghans with expired visa or passport without visa



175 Undocumented Afghan individuals returned to Afghanistan through the **Torkham and Chaman/Spin Boldak border**. **91** individuals used the **Torkham border** crossing while **84** individuals crossed through **Chaman/Spin Boldak border** crossing.

WHO IS AN UNDOCUMENTED AFGHAN

- Individuals with No Documents
- Individuals with No Passport or Lapsed Visa
- Individuals with Tazkira
- Individuals with Expired POR Card
- Individuals with ACC Card
- Individuals with ACC Token

RESPONDENT'S PROFILE

Respondents by Gender

69% Male / **31% Female**

Age Group of Respondents

Age Group	Gender	Total %
5 - 17 Yr	Male	0%
18 - 59 Yr	Male/Female	100%
60 + Yr	Male	0%

RETURNEE'S PROFILE

Age-Gender Disaggregation (Individuals)

Total Female: 55.6% / **Total Male: 44.4%**

Age Group	Female %	Male %
60+ Yr	1.7%	0.6%
18-59 Yr	23%	16.9%
5 - 17 Yr	18%	15.2%
0 - 4 Yr	12.9%	11.7%

VULNERABLE CASES

Overall **6%** individuals were identified as vulnerable during this reporting period

- 94%** of vulnerable cases include:
 - 37%** Elderly Members
 - 9%** Disabled Persons
 - 36%** Chronically ill persons
 - 0%** Pregnant Women
 - 0%** Female Headed Households
 - 18%** *Widows+ Other

* Other category includes 18% mentally challenged persons.

TRANSPORT & ASSETS

Overall **21** vehicles crossed from **Torkham and Chaman/Spin Boldak borders**. Majority of the returnees used **Buses and Trucks (48% and 44% respectively)** to return to Afghanistan. **Cash & Household Items** were reported as highest priority assets for migrants returning to Afghanistan.

* % of Households travelling with assets to Afghanistan

Transit Point	Household Items or Personal Belongings	Productive Assets	Families Carrying Cash	Livestock	Own Transportation
Torkham	100%	11%	8%	0%	0%
Chaman	0%	0%	0%	0%	0%

Transport Type Summary

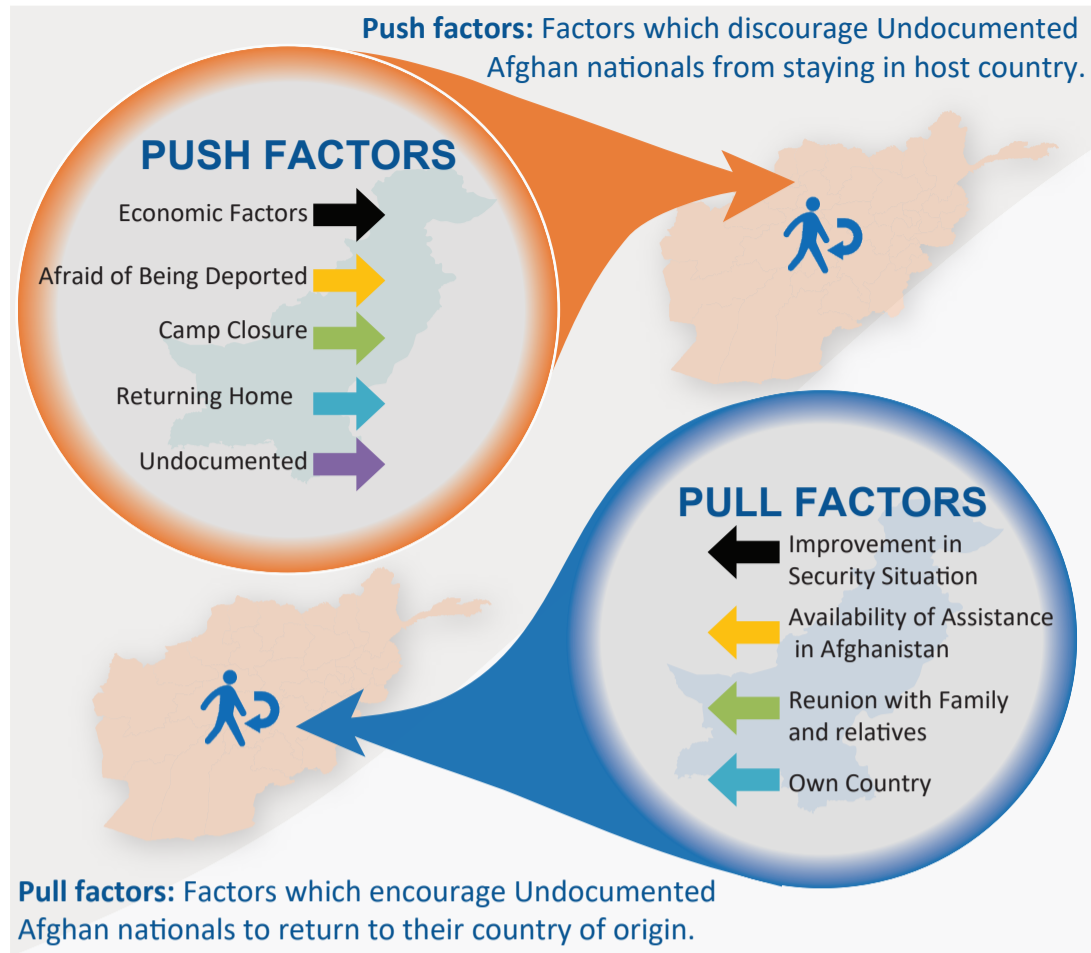
Transport Type	Percentage	Average Individuals per Vehicle
Truck	44%	10
Pickup	8%	5
Bus	48%	9
Rented Car	0%	-
By Foot	0%	-

RETURNS & ACC CARD DISTRIBUTION

Legend: **Torkham** (Blue line), **Chaman** (Orange line), **ACC Card Distributed** (Grey circles)

Date	Torkham Returns	Chaman Returns	ACC Card Distributed
17-23 Mar 2019	132	166	470,836
31 Mar - 6 Apr	123	366	423,449
14-20 Apr	66	403	495,855
21 April - 4 May	207	457	518,511
12-18 May	53	173	511
26 May - 1 June	60	108	546,511
9-15 June	108	351	570,465
23-29 June	121	351	570,465
7-13 July	174	358	570,465
21-27 July	107	274	570,465
4-10 Aug	108	329	570,465
18-24 Aug	79	108	570,465
1-7 Sep	122	218	570,465
15-21 Sep	80	524	570,465
29 Sep - 5 Oct	107	443	570,465
13-19 Oct	63	168	570,465
27 Oct - 2 Nov	134	175	592,656
10-16 Nov	86	127	592,656
24-30 Nov	89	89	592,656
8-14 Dec	57	309	592,656
22-28 Dec	54	145	592,656
5-11 Jan	104	293	592,656
19-25 Jan	133	176	592,656
2-8 Feb	55	195	592,656
16-22 Feb	49	174	592,656
1-7 Mar 2020	30	204	592,656

PUSH AND PULL FACTORS RECORDED BASED ON RETURNEES RESPONSE

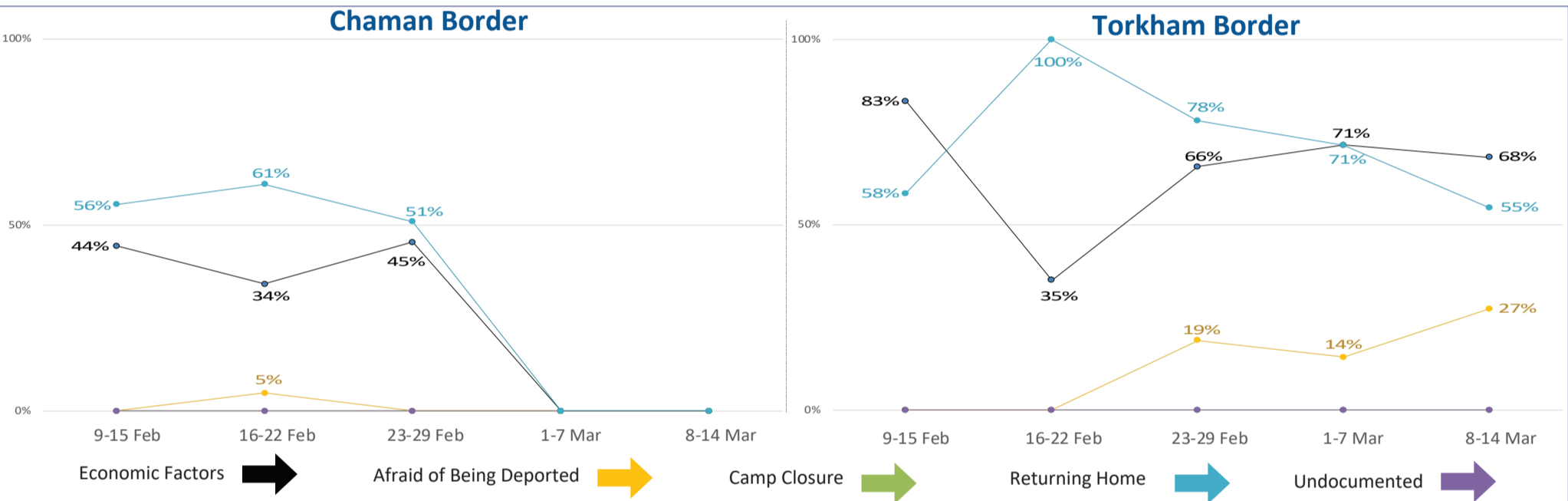


In **Torkham**, 'Returning Home' is trending downwards and **55%** of the respondents cited this as a push factor (*decrease of 23 percentage points compared to the last reporting period*). 'Economic Factors' is trending upwards and **68%** of the respondents cited this as a push factor (*increase of 2 percentage points compared to the last reporting period*). Whereas **none** of the respondents at **Torkham** reported 'Lack of Documentation', 'Afraid of Being Deported' or 'Camp Closure' as a push factor.

In **Chaman**, **none** of the respondents reported against any of the push factor.

The indicator rated as the main pull factor for both border crossing points was 'Own Country'. This was reported by **77%** of the respondents at **Torkham** and **none** of the respondents at **Chaman**. The second highest concern was 'Reunion with Family / Relatives' which was reported by **36%** of the respondents at **Torkham** and **none** of the respondents at **Chaman**. Furthermore, **none** of the respondents at **Torkham** and **Chaman** reported 'Improvement in Security Situation' or 'Availability of Assistance in Afghanistan' as a pull factor.

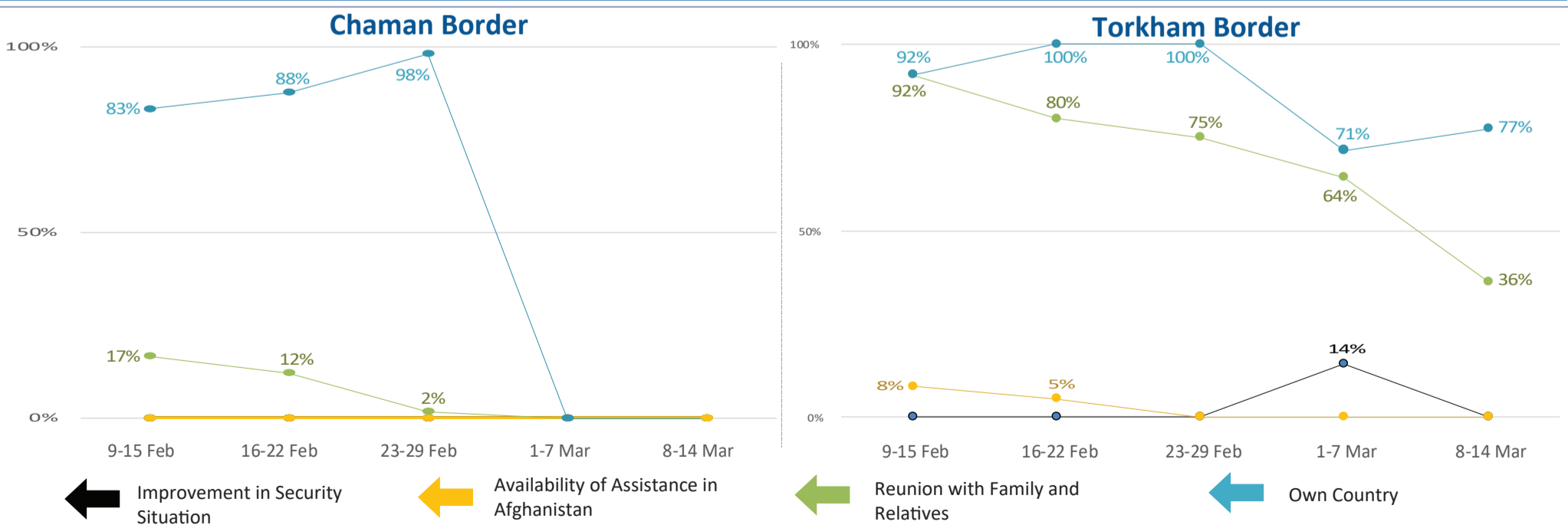
PUSH Factors (Weekly Trend)



Top three ranked provinces in Pakistan based on the PUSH Factors' responses are.



PULL Factors (Weekly Trend)

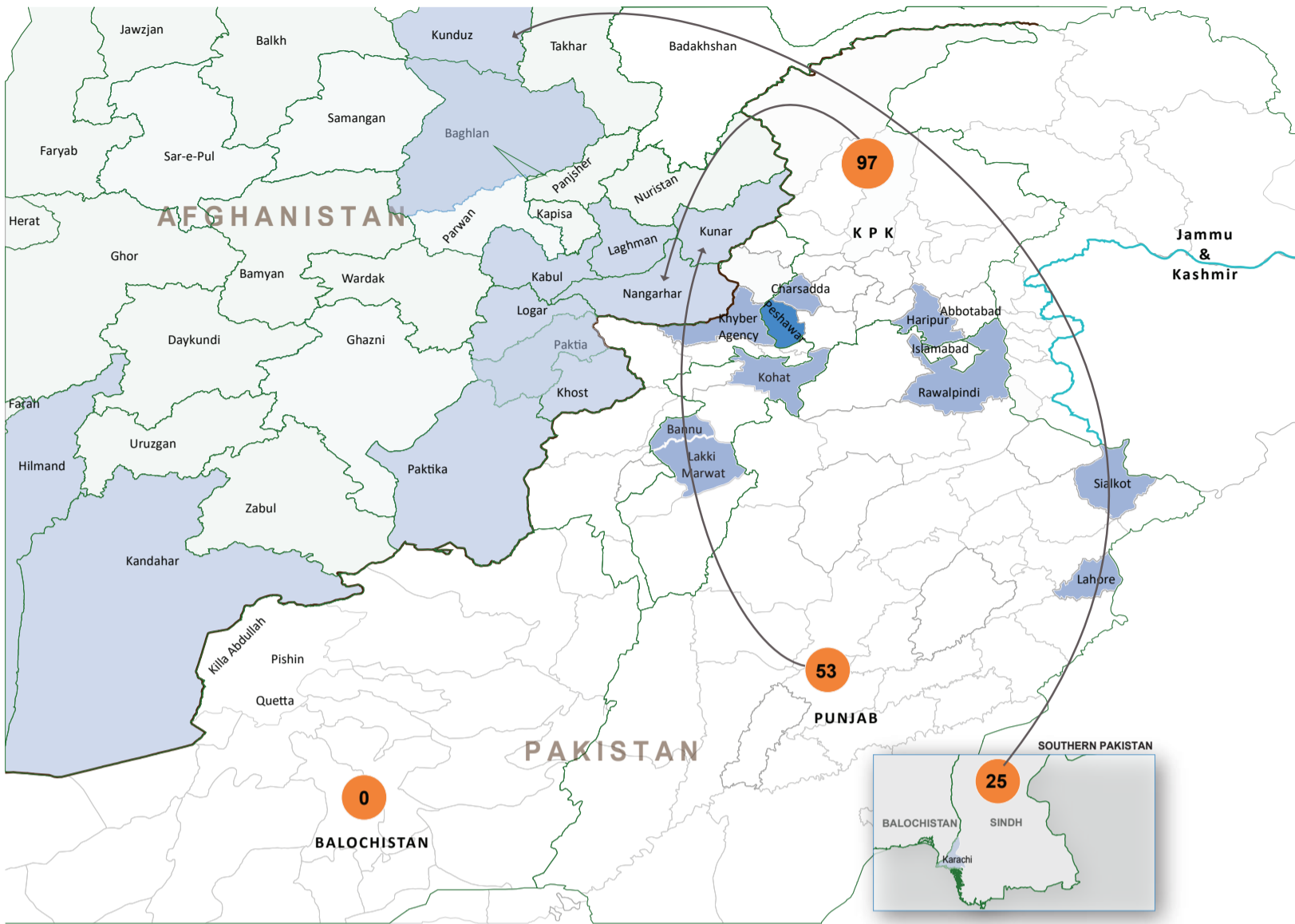


Top three ranked provinces in Afghanistan based on the PULL Factors' responses are.



HIGH RETURN AREAS

Population Movement Trend for Spontaneous Returns of Undocumented Afghans from Pakistan



AFGHANISTAN

The top 5 destination provinces for returns are:

- Nangarhar (34%)
- Kunduz (22%)
- Kabul (17%)
- Kunar (14%)
- Baghlan (7%)

PAKISTAN

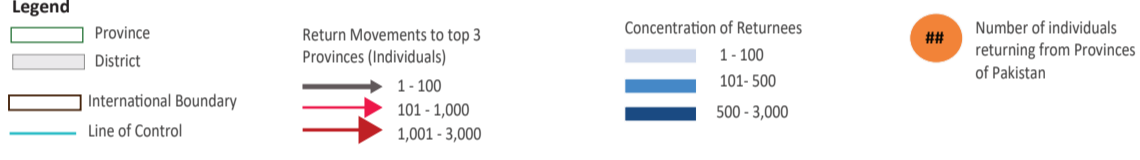
The largest proportion of returns are from:

- Khyber Pakhtunkhwa (56%)
- Punjab (30%)
- Sindh (14%)

Data Source: Population Census Organization, UNOCHA

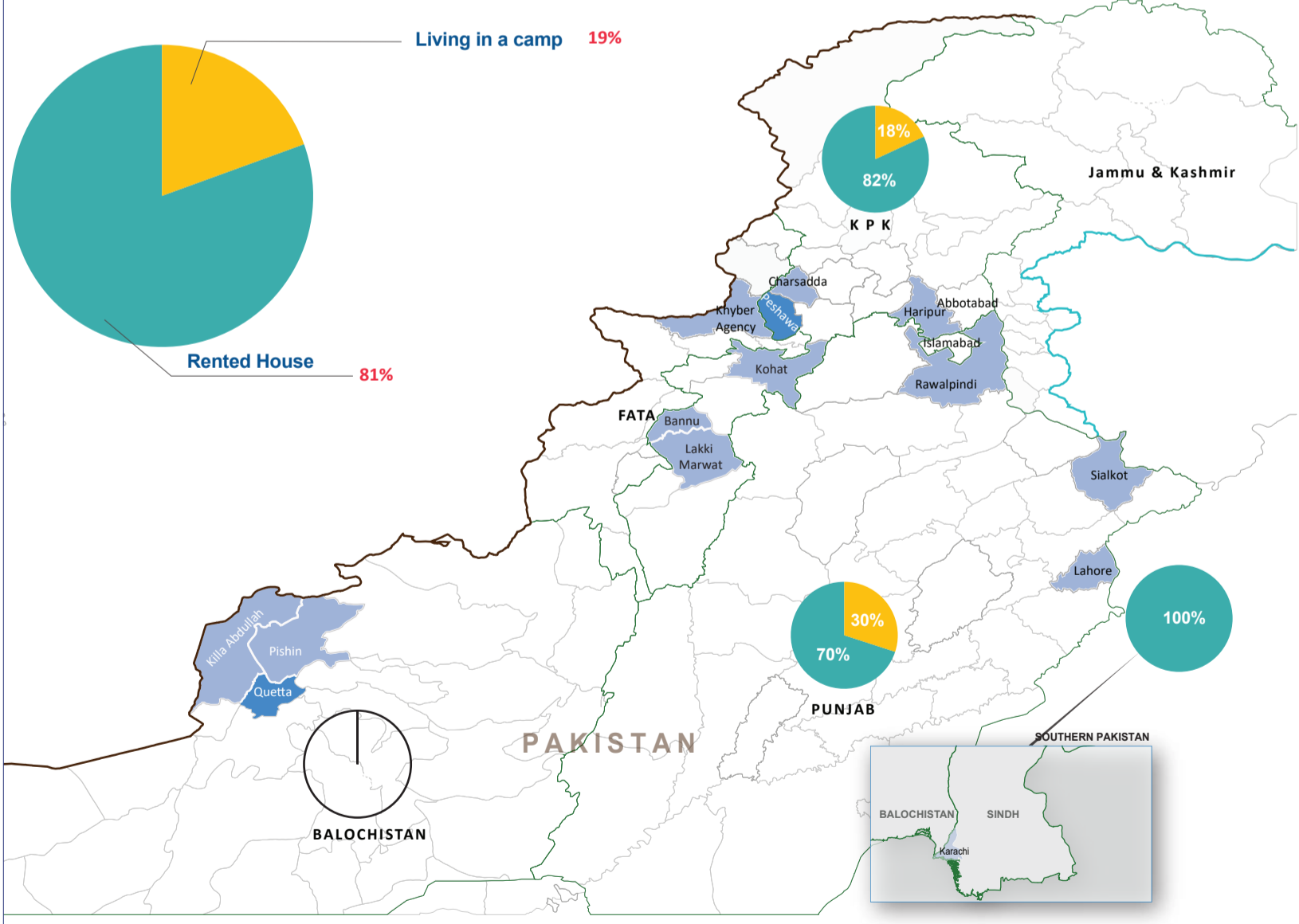
Disclaimers: The designations employed and the presentation of material on this map do not imply the expression of any opinion whatsoever on the part of the Secretariat of the United Nations concerning the legal status of any country, territory, city or area or of its authorities, or concerning the delimitation of its frontiers or boundaries. The dotted line represents approximately the line of control between India and Pakistan. The final status of Jammu and Kashmir has not yet been agreed upon by the parties.

Please note: The boundaries and names shown and the designations used on this map do not imply official acceptance or endorsement by IOM.



LIVING CONDITIONS IN PAKISTAN

Current Living Conditions of Undocumented Afghans in Pakistan



Overall, **81%** of Undocumented Afghan returnees reported living in **rented houses** whereas the remaining **19%** reported living in **camps**.

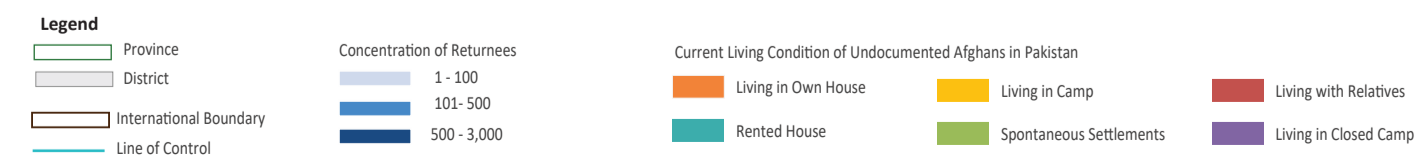
There are differences at provincial levels where for example in **Sindh 100%**, in **Khyber Pakhtunkhwa 82%**, in **Punjab 70%** and in **Balochistan 98%** of Undocumented Afghan returnees reported living in **rented houses**.

In **Punjab 30%**, in **Khyber Pakhtunkhwa 18%**, whereas in **Balochistan and Sindh none** of the Undocumented Afghan returnees reported living in **camps**.

Data Source: Population Census Organization, UNOCHA

Disclaimers: The designations employed and the presentation of material on this map do not imply the expression of any opinion whatsoever on the part of the Secretariat of the United Nations concerning the legal status of any country, territory, city or area or of its authorities, or concerning the delimitation of its frontiers or boundaries. The dotted line represents approximately the line of control between India and Pakistan. The final status of Jammu and Kashmir has not yet been agreed upon by the parties.

Please note: The boundaries and names shown and the designations used on this map do not imply official acceptance or endorsement by IOM.



* The Response for "Own House" relates to the fact that land/house is bought in the name of Pakistani relatives.