

# Seasonal Floods Analysis October 2019

Severe flooding caused by atypical rainfall across South Sudan has caused temporary displacement and disruption in service provision to more than 900,000 individuals. Through a network of DTM focal points in the field and in coordination with other humanitarian partners and authorities the team has mapped more than 250 locations (villages and neighbourhoods) affected by flooding in the country. The scale and magnitude of the flooding has prompted the Government to declare the State of Emergency on 26 of October, 2019 in 27 different areas, mainly in the Greater Upper Nile region and the Jonglei plateau.

As part of the response, DTM has prepared a set of maps providing geo-referenced analysis of the flooded areas with separate layers indicating the evolution of areas under water since the beginning of October 2019.

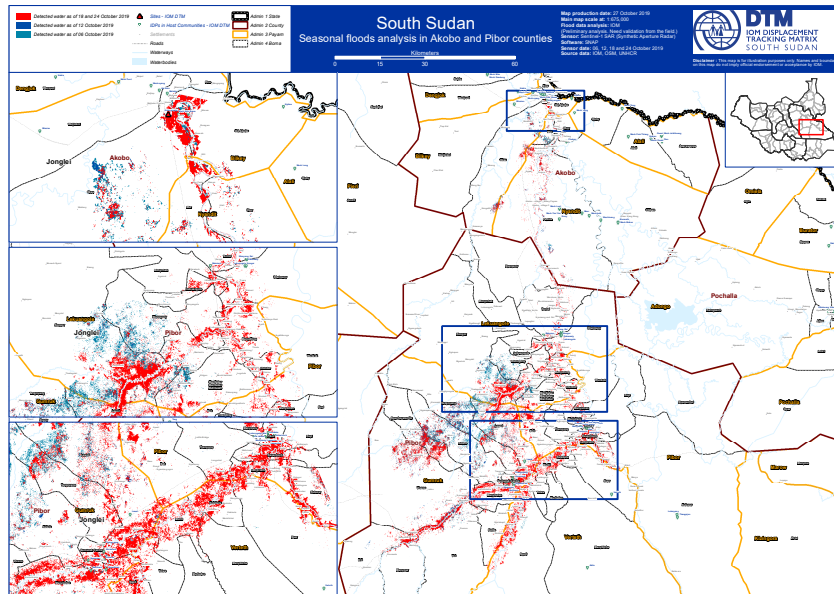
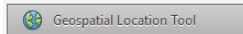
Restricted accessibility and logistical constraints have limited field assessments in certain areas and rendered data verification challenging. DTM is working closely with partners in order to verify the number of affected individuals in flooded areas.

## Coordinates:

Using Adobe Acrobat Pro will enable you to identify coordinates for locations of interest.

## Steps:

View>Tools>Analyze: this will display a small window with 3 options. Select Geospatial Location Tool. This will in turn display a small window showing the latitude and longitude. Now move the cursor to the location of interest.



## Seasonal Flood Analysis Maps



Click links below to access

STATE LEVEL



[Unity and Jonglei States](#)



[Warrap and Unity States](#)

COUNTY LEVEL



[Akobo and Pibor County](#)



[Unity State \(Leer County Focus\)](#)



[Maban County](#)



[Mayom County](#)



[Twic County](#)



[Pibor County](#)

SOURCE

Flood data analysis: IOM (Preliminary analysis. Need validation from the field.)  
Sensor: Sentinel-1 SAR (Synthetic Aperture Radar)  
Software: SNAP Sensor date: 06, 12, 18 and 24 October 2019  
Source data: IOM, OSM (roads), UNHCR (refugee camps)