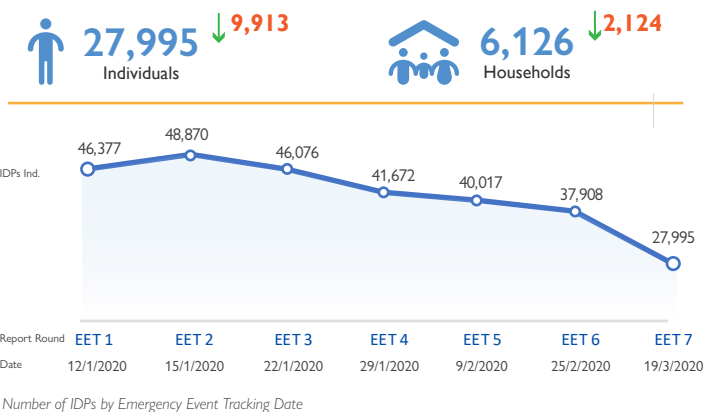


The DTM Emergency Event Tracking (EET) is deployed to track sudden displacement and population movements, provide more frequent updates on the scale of displacement and quantify the affected population when needed. As a subcomponent of the new Mobility Tracking methodology in Sudan (Round Zero), and activated on a need basis, EET utilises a broad network of key informants to capture best estimates of the affected population presence per location – a useful tool for humanitarian response planning and design.

Event Overview



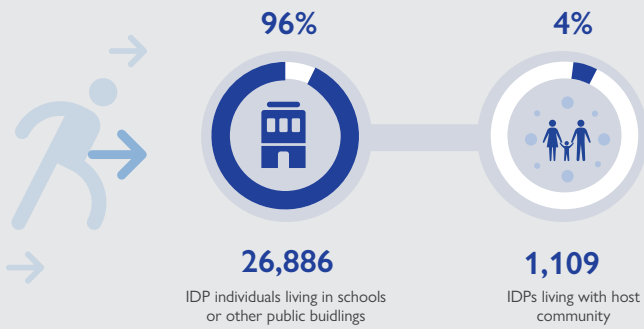
Location of Origin	# IDPs Individuals	# IDPs Households
Krinding 2	19,037	4,229
Krinding 1	4,801	1,020
Sultan House	2,638	504
Baradia Village	958	252
Gokar Village	436	97
Hashaba Village	103	18
Gogata	7	2
Doait Borri	4	1
Allah Maraga	4	1
Atia	4	1
Jalati	3	1
Grand Total	27,995	6,126

Total number of IDP individuals per location of origin within El Geneina locality, West Darfur.

DTM teams activated EET to monitor the displacement of individuals affected by the inter-communal violence in West Darfur – for more information see previous EET reports 1 – 6 here. The seventh EET update estimates a total number of 27,995 individuals (6,126 households) situated across 35 sites of displacement in El Geneina, having arrived from 11 locations of origin. These updated figures reflect a decrease of 9,913 internally displaced persons (IDPs) from the area since the previous EET update on 25 February 2020, and the sites of Ustaz Al Said Houase and Al Thora Mosque no longer hosting IDPs. Reports from the field indicate that IDPs with unaffected houses are continuing to return to their locations of origin.



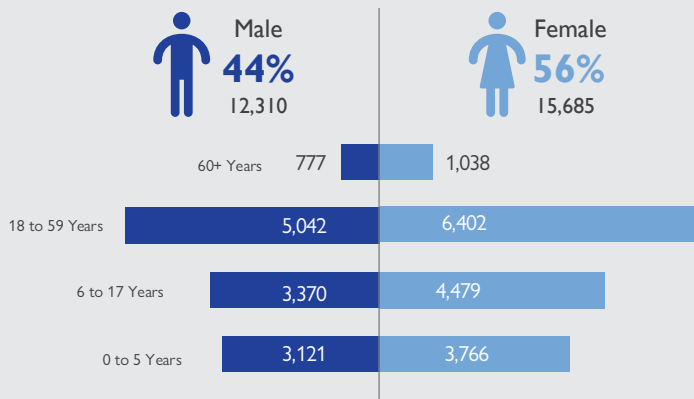
Shelter Indicator



Through its shelter indicator DTM identified 26,886 (96%) of IDP individuals living in schools or other public buildings and 1,109 (about 4%) living with the host community. This distribution resembles the previous EET update on 9 February when schools or other public buildings also hosted the majority (96%) of the IDP caseload, however, there are no longer IDPs living in abandoned buildings (critical shelters).

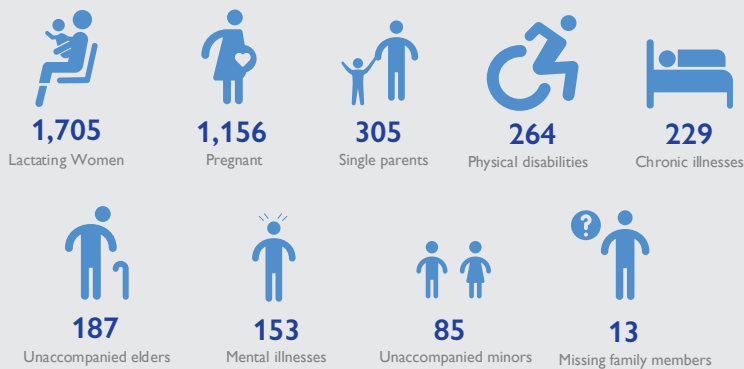
Of the total IDP caseload an estimated 15,685 (56%) were female and 12,310 (44%) were male. Further disaggregation by age indicates 18 to 59 as the predominant age category (23% females, 18% males), followed by ages 6 to 17 (16% females, 12% males), 0 to 5 (13% females, 11% males) and 60 and over (4% females, 3% males).

Demographics



About 4,097 cases of additional vulnerabilities in need of further support and assistance were identified through the protection indicator. Lactating and pregnant women made up 42 and 28 per cent respectively, followed by single parents (7%), physical disabilities and chronic illnesses (both 6%), unaccompanied elders (5%), mental illnesses (4%), unaccompanied minors (2%) and missing family members (0.3%).

Vulnerabilities



Data on return intentions, demographics and protection indicators are subject to further verification through registration activities. Displacement figures collected through this activity are further refined with each data collection round to reduce any discrepancies that may result from the miscorrelation of the EET methodology and that of DTM registration activities linked to direct humanitarian assistance.



Return Intention

Data collected through the return intention indicator suggests that 100% of the remaining IDPs intend to return to their locations of origin upon improvement of the security situation and the reconstruction of destroyed homes.

IOM DISCLAIMER

The opinions expressed in the report are those of the authors and do not necessarily reflect the views of the International Organization for Migration (IOM). The designations employed and the presentation of material throughout the report do not imply the expression of any opinion whatsoever on the part of IOM concerning the legal status of any country, territory, city or area, or of its authorities, or concerning its frontiers or boundaries.

IOM is committed to the principle that humane and orderly migration benefits migrants and society. As an intergovernmental organization, IOM acts with its partners in the international community to: assist in the meeting of operational challenges of migration; advance understanding of migration issues; encourage social and economic development through migration; and uphold the human dignity and well-being of migrants.



Sudan
Humanitarian
Fund



Funded By European
Union Humanitarian Aid



Canada