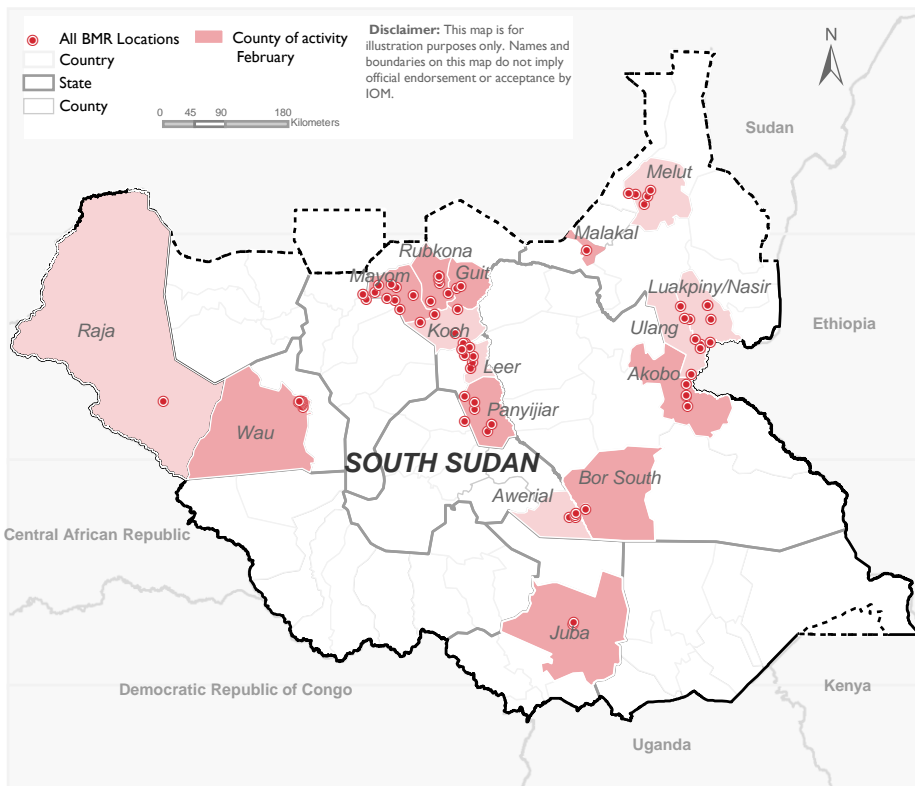


LOCATIONS OF THE ACTIVITIES



Active in DTM BMR database	933,607 Individuals
Targeted for Authentication	382,721 Individuals
Authenticated	356,248 Individuals
Newly Registered	8,024 Individuals
Deactivation	2,943 Individuals
Change of Checkpoint	1,206 Individuals
Lost Card Replacement	1,161 Individuals
Merging Households	69 Individuals
De-Registration	10 Individuals

County	Number of locations	Authenticated	Newly registered	Deactivation
Akobo	2		8,024	
Bor South	1	1,842		14
Guit	5	10,036		
Juba	2	28,467		214
Malakal	1	27,570		
Mayom	3	20,004		
Panyijar	5	58,295		
Rubkona	5	163,959		2,504
Wau	7	46,075		211
Total	31	356,248	8,024	2,943

IOM's biometric registration system has been active since 2014, with 933,607 beneficiaries active in its database to date, out of which 56 per cent (523,090 individuals) are female; and 60 per cent (555,999 individuals) are under 18 years old. Since August 2018, IOM and the World Food Programme (WFP) are collaborating on the project "Enhancing targeted food distribution through biometric data management" seeking to contribute to increased food security throughout South Sudan. Under this collaboration, IOM is responsible for checking the eligibility of households receiving assistance through fingerprint authentication at selected distribution sites. Those beneficiaries whose households do not retrieve their food assistance in three consecutive distributions are assumed to no longer be present in the location and subsequently become deactivated. As a result, fluctuations in registered beneficiary numbers can be observed on an ongoing basis. **Biometric registration, complemented through regular authentication, enhances beneficiary targeting, avoiding duplications through fingerprint scanning and ensuring that the assistance reaches the intended beneficiaries.**

Biometric maintenance work is supported by a variety of donors, including DFID, ECHO and USAID alongside funds received from WFP.

DEFINITIONS

Active in DTM BMR database	Number of individuals registered and verified in the BMR database
Authenticated	Number of beneficiaries reached through WFP GFD authentication
Newly Registered	Number of individuals who were newly registered, i.e. new entries into the system
Deactivation	Number of beneficiaries who missed 3 consecutive food distributions and have been deactivated from the database system
Change of Checkpoint	Number of individuals for whom the checkpoint (registration location) was changed, e.g. from Bentiu PoC to Nhialdu
Lost Card Replacement	Number of individuals who were assisted by replacing lost cards
Merging Households	Number of beneficiaries who wish to be joined with another family, i.e. merged into one household with a single beneficiary card
De-Registration	As a result of a relocation/facilitated returns or other movement out of the site.